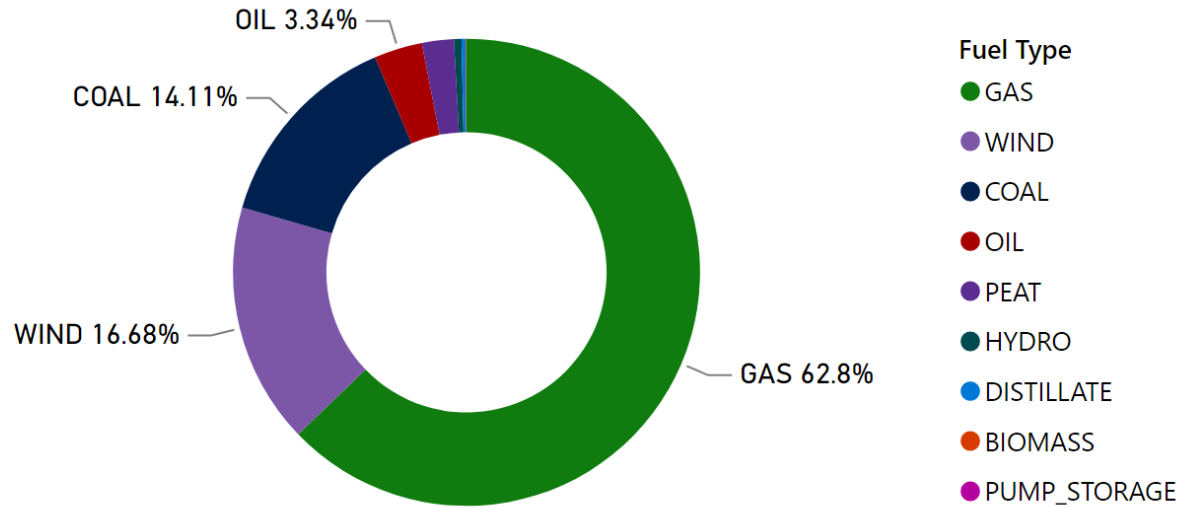


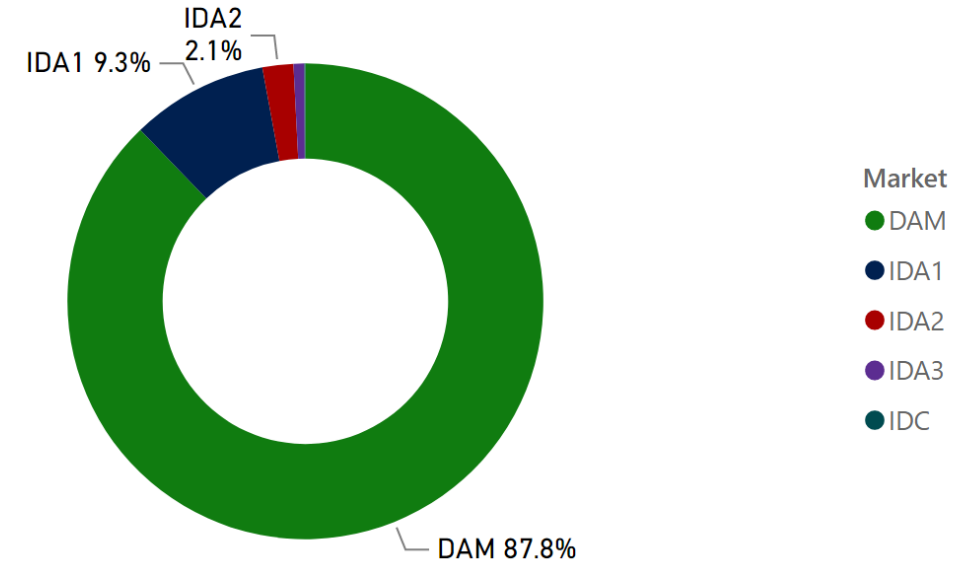
MMU Weekly Market Summary Report - Week Commencing 12 September 2022

Weekly Fuel Mix



Source: SEMO PX

Weekly Volume by Market



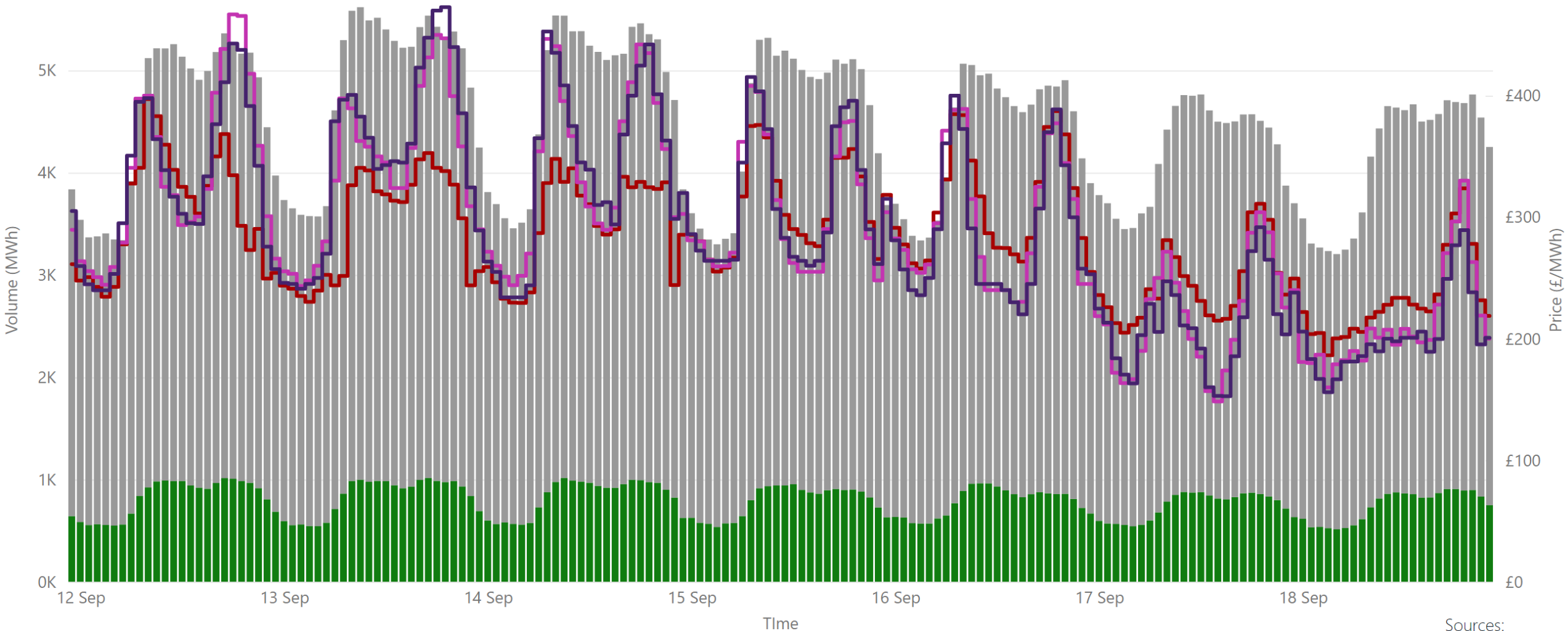
Source: SEMO PX

Summary Table

| Date | Daily System Demand (MWh)* | Daily SEM DAM Price (£/MWh)** | Daily Actual Wind (MWh)* | Daily Average Gas Price (p/wh)*** | Daily Average Coal Price (€/t)*** | Daily Average Carbon Price (€/t)*** |
|-------------------|----------------------------|-------------------------------|--------------------------|-----------------------------------|-----------------------------------|-------------------------------------|
| 12 September 2022 | 102,495.00 | 311.68 | 12,772.75 | 345.05 | 329.00 | 71.43 |
| 13 September 2022 | 103,067.50 | 299.36 | 24,936.00 | 342.25 | 336.00 | 69.35 |
| 14 September 2022 | 103,464.25 | 298.44 | 21,951.50 | 211.05 | 336.00 | 72.13 |
| 15 September 2022 | 103,344.50 | 310.04 | 16,892.50 | 325.10 | 337.20 | 71.44 |
| 16 September 2022 | 100,548.25 | 313.72 | 13,929.25 | 221.00 | 331.00 | 72.86 |
| 17 September 2022 | 94,357.75 | 245.11 | 2,972.50 | 221.00 | 331.00 | 72.86 |
| 18 September 2022 | 92,003.25 | 234.80 | 3,716.25 | 221.00 | 331.00 | 72.86 |

Sources: * EirGrid ** SEMO PX *** Oil Market Journal

Weekly Day Ahead Market Summary - Week Commencing 12 September 2022



Legend ● NI Volume* ● ROI Volume* ● SEM DAM Price* ● GB EPEX DAM Price** ● GB Nordpool DAM Price***

Sources:
 * SEMO PX
 ** EPEX
 *** Nordpool

£283.34
 Weekly Average SEM DAM Price*£

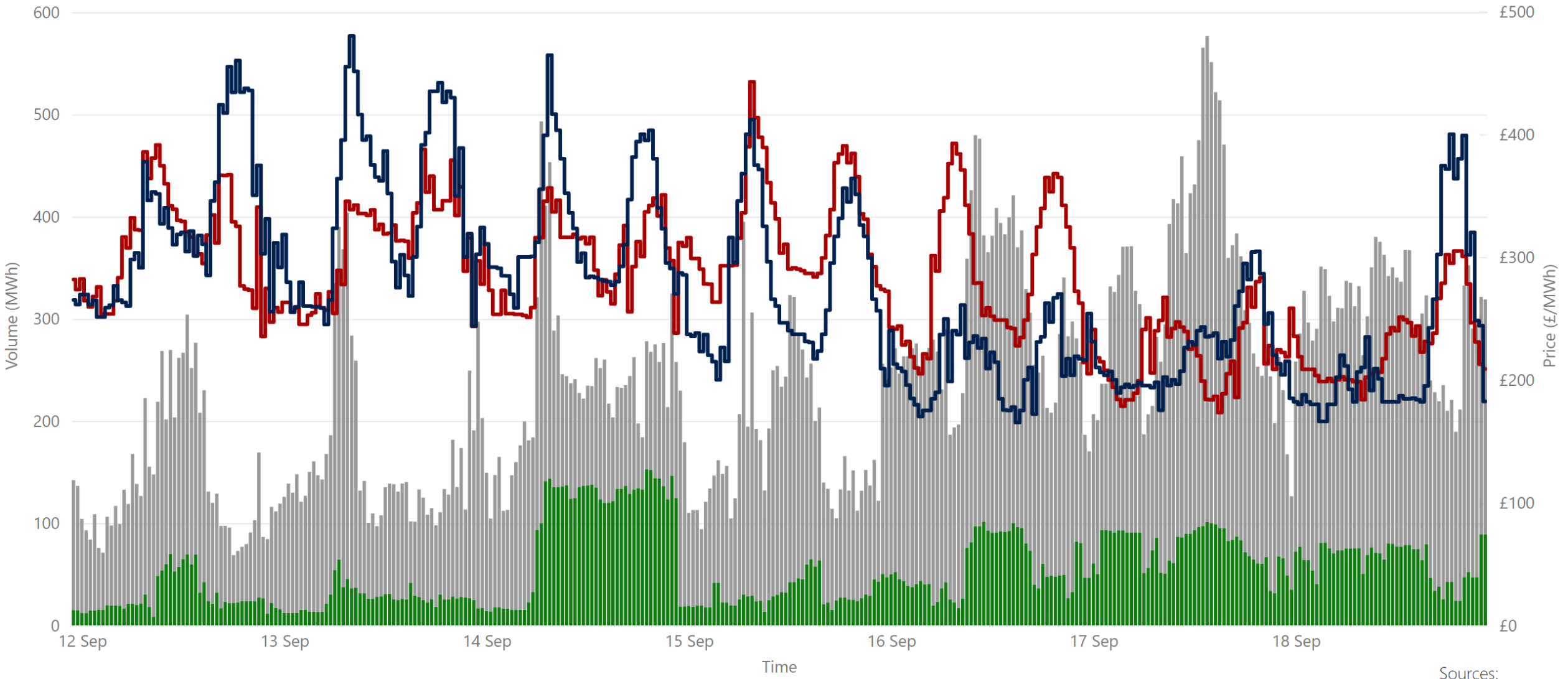
£292.01
 Weekly Average GB EPEX Price**

£289.91
 Weekly Average GB Nordpool Price***

£217,293,441.46
 Weekly SEM DAM Market Value*

752,424.10
 Weekly SEM DAM Volume MWh*

Weekly Intraday Auction 1 Summary - Week Commencing 12 September 2022



Legend ● NI Volume* ● ROI Volume* ● SEM IDA1 Price* ● GB IDA1 Price**

Sources:
* SEMO PX
** EPEX

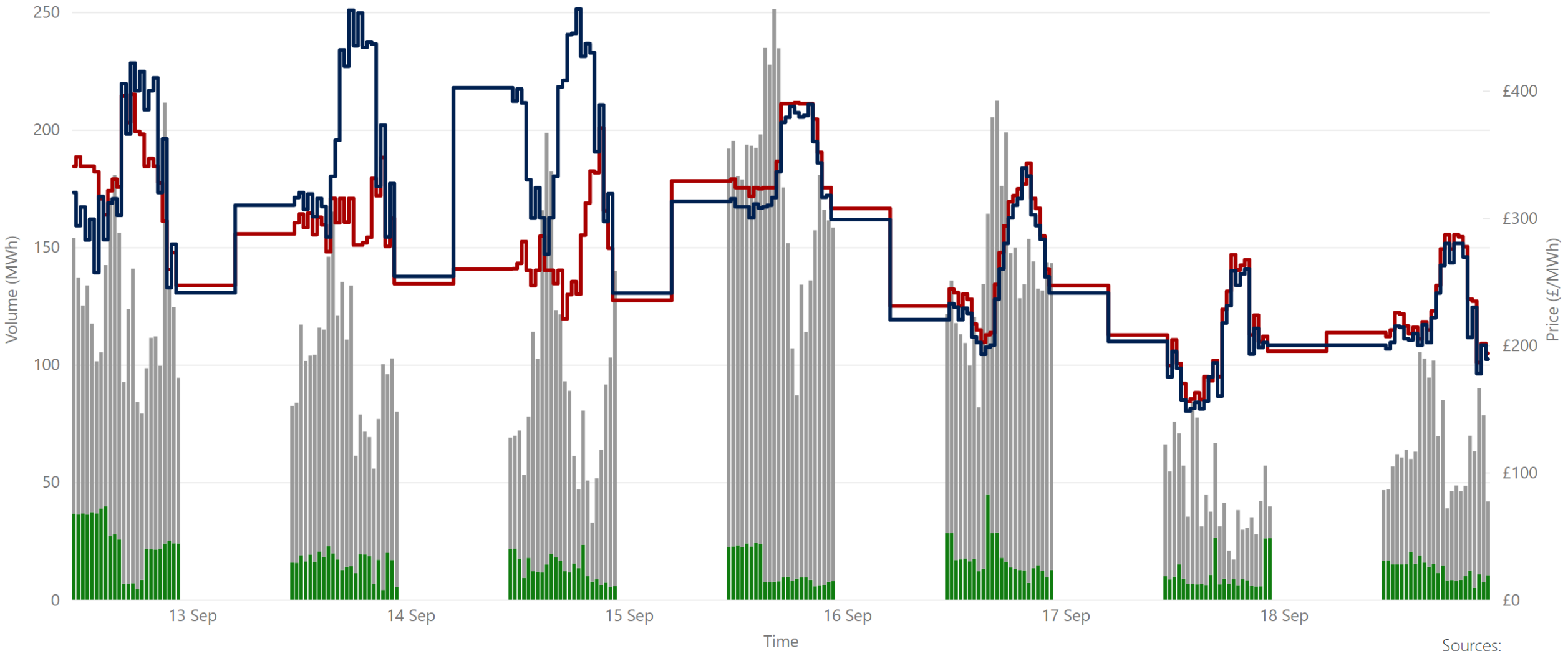
£281.67
Weekly Average SEM IDA1 Price*

£276.12
Weekly Average GB IDA1 Price**

£21,651,287.63
Weekly SEM IDA1 Market Value*

79,694.15
Weekly SEM DAM Volume MWh*

Weekly Intraday Auction 2 Summary - Week Commencing 12 September 2022



Sources:
 * SEMO PX
 ** EPEX

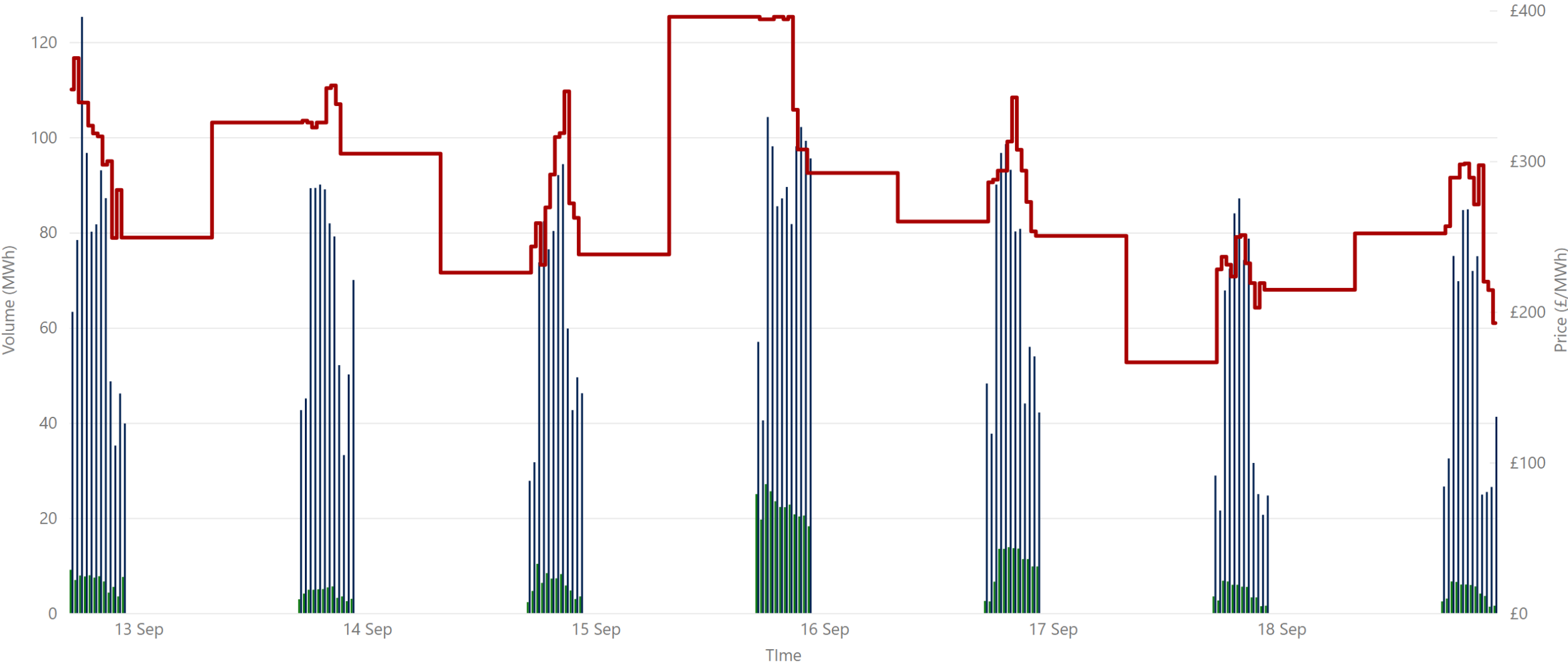
£278.10
 Weekly Average SEM IDA2 Price*

£294.59
 Weekly Average GB IDA2 Price**

£5,240,162.41
 Weekly SEM IDA2 Market Value*

18,004.85
 Weekly SEM IDA2 Volume MWh*

Weekly Intraday Auction 3 Summary - Week Commencing 12 September 2022



Jurisdiction ● NI Volume* ● ROI Volume* ● SEM IDA 3 Price*

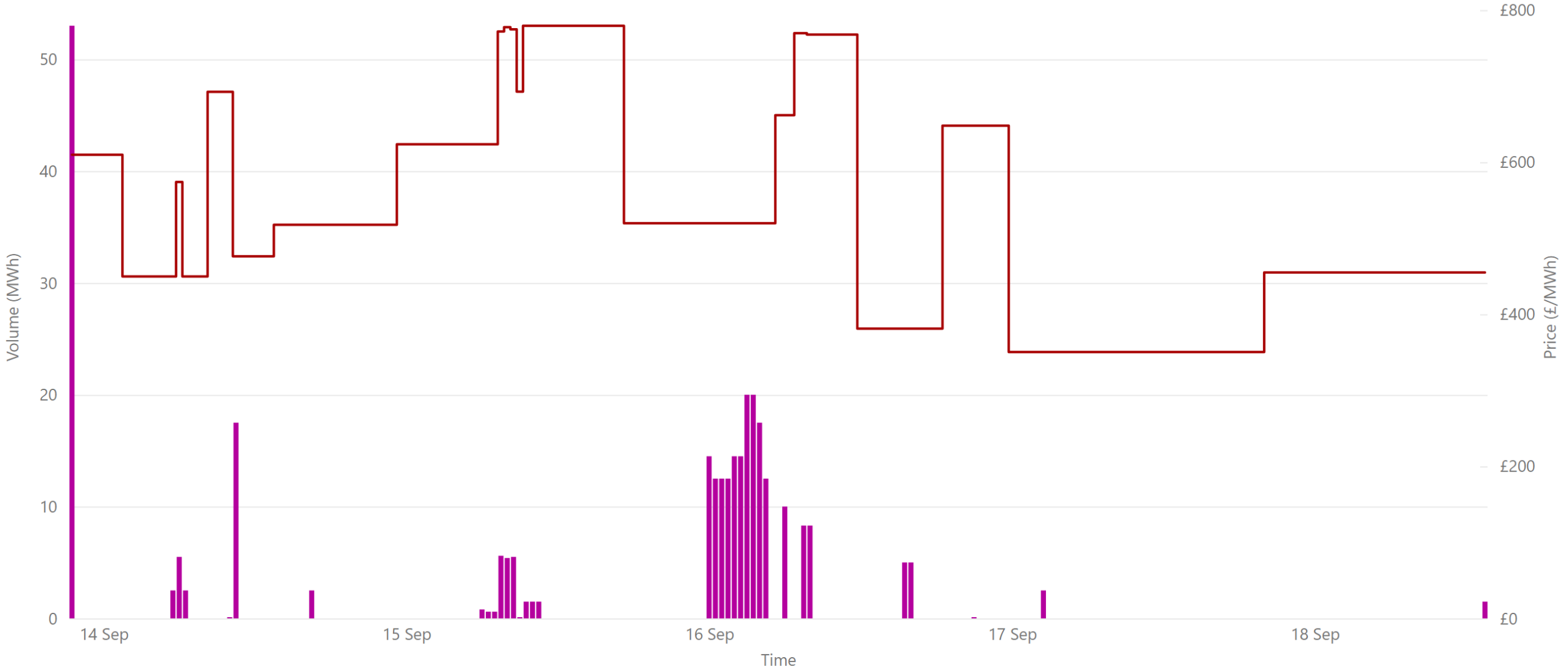
Source: * SEMO PX

£292.82
Weekly Average SEM IDA3 Price*

£1,914,280.32
Weekly SEM IDA3 Market Value*

6,259.05
Weekly SEM IDA3 Volume MWh*

Weekly Intraday Continuous Summary - Week Commencing 13 September 2022



● IDC Volume NI & ROI* ● WEIGHTED_AVERAGE_PRICE

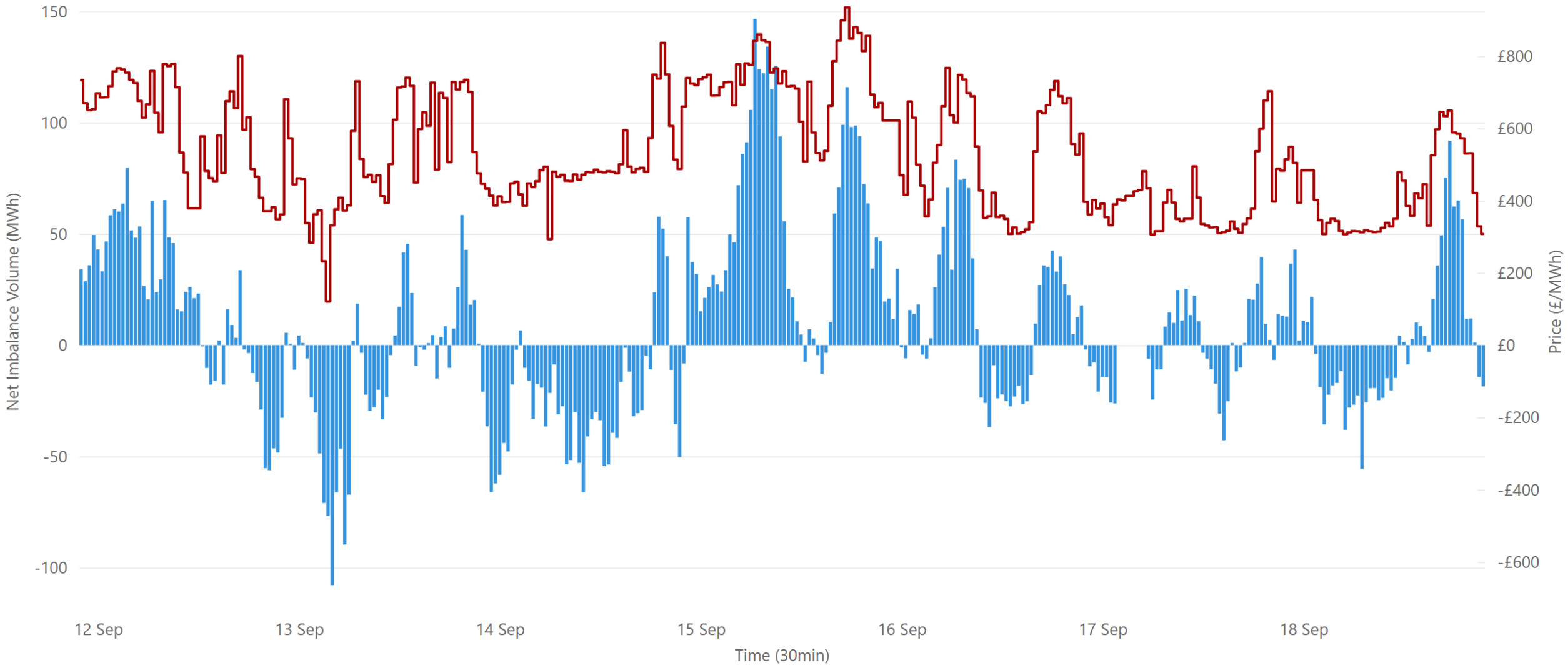
Source: * SEMO PX

£389.71
Weekly SEM IDC Average Price*

£292.28
Weekly SEM IDC Market Value

4.50
Weekly SEM IDC Volume MWh*

Weekly Balancing Market 30 Minute Summary - Week Commencing 12 September 2022



Source: * SEMO

£264.75
Ave 30min Imbalance Price*

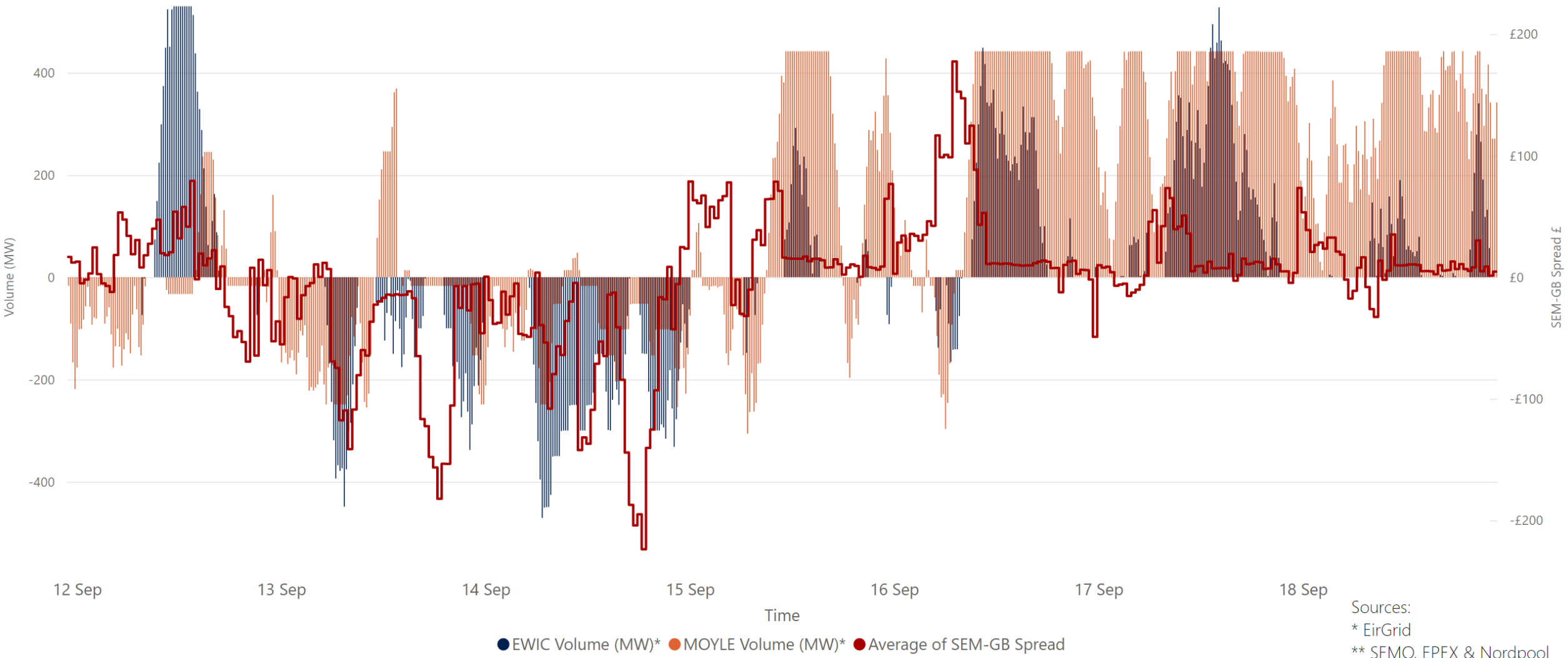
£467.47
Max 30min Imbalance Price*

£60.41
Min 30min Imbalance Price*

73.37
Max Net Imbalance Volume*

-53.97
Min Net Imbalance Volume*

Weekly Interconnection Summary - Week Commencing 12 September 2022



379,986.00
Weekly MOYLE (MW) Impo...

-71,336.00
Weekly MOYLE (MW) Export*

308,650.00
Weekly MOYLE (MW) NET*

142,466.00
Weekly EWIC (MW) Import*

-87,166.00
Weekly EWIC (MW) Export*

55,300.00
Weekly EWIC (MW) NET*

Weekly Wind Capacity Summary - Week Commencing 12 September 2022



● 15 Minute Forecast Wind (MW)* ● 15 Minute Actual Wind (MW)*

Sources:
* EriGrid

1516
Max Actual Wind (MW)*

17
Min Actual Wind (MW)*

1284
Max Forecast Wind (MW)*

44
Min Forecast Wind (MW)*