

# MMU Weekly Report - Sterling

[View in Power BI](#) ↗

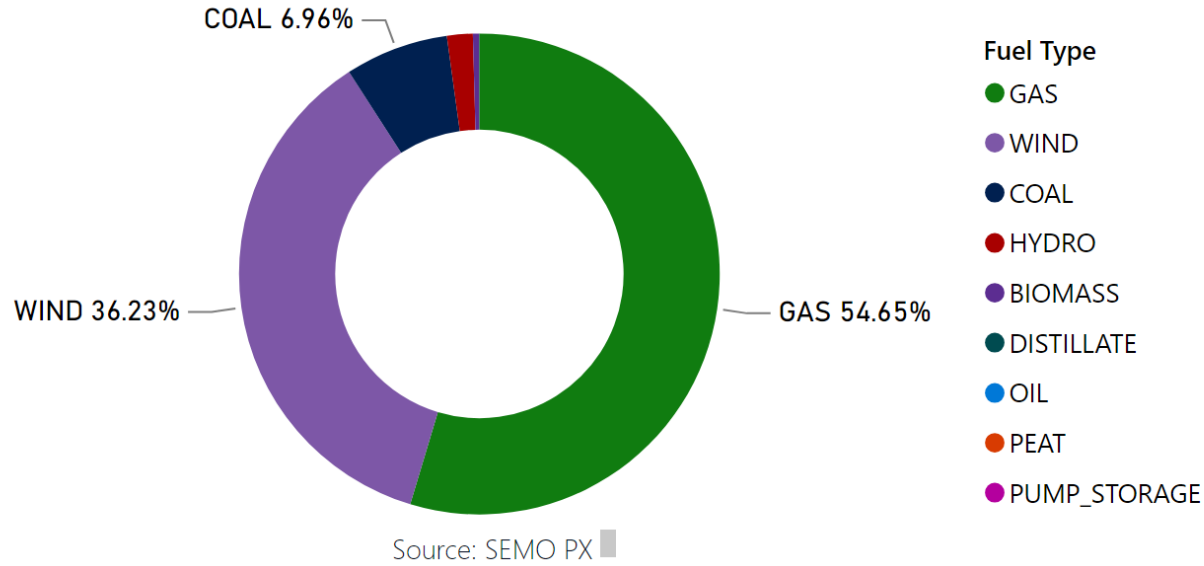
**Last data refresh:**  
29/08/2023 12:31:48 UTC

**Downloaded at:**  
30/08/2023 10:12:00 UTC

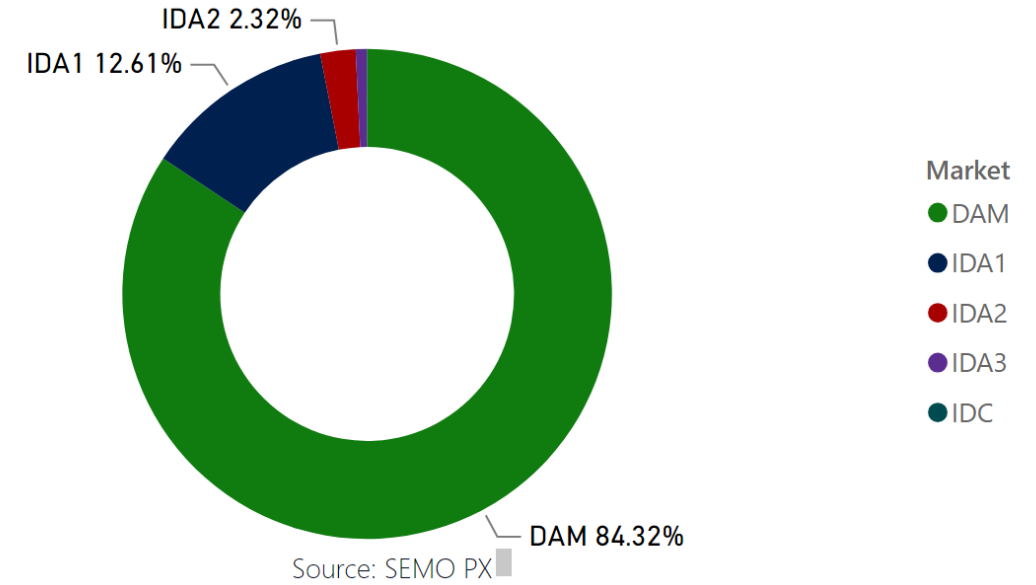


# MMU Weekly Market Summary Report - Week Commencing 21 August 2023

## Weekly Fuel Mix



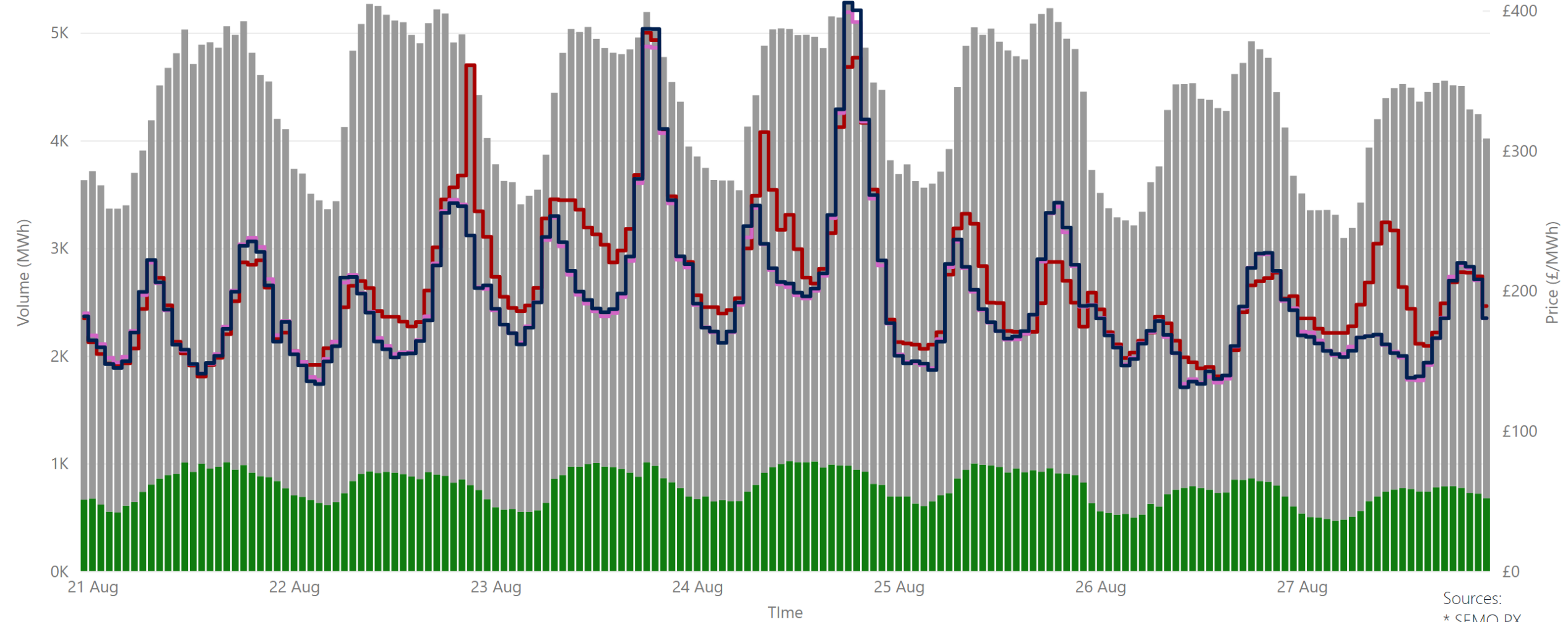
## Weekly Volume by Market



## Summary Table

Date	Daily System Demand (MWh)*	Daily DAM Price (£/MWh)**	Daily Actual Wind (MWh)*	Daily Average Gas Price (p/th)***	Daily Average Coal Price (€/t)***	Daily Average Carbon Price (€/t)***
21 August 2023	102,081.75	88.05	66,312.75	94.50	118.50	86.65
22 August 2023	104,367.50	102.64	34,682.25	108.05	118.80	88.43
23 August 2023	105,723.00	126.82	13,311.00	92.05	118.25	87.05
24 August 2023	103,499.50	125.23	23,509.25	81.25	118.15	83.91
25 August 2023	102,384.50	96.94	28,489.50	88.50	117.75	83.85
26 August 2023	94,263.25	86.21	48,594.25	88.50	117.75	83.85
27 August 2023	92,615.25	97.41	38,458.00	88.50	117.75	83.85

# Weekly Day Ahead Market Summary - Week Commencing 21 August 2023



Legend ● NI Volume\* ● ROI Volume\* ● SEM DAM Price\* ● GB EPEX DAM Price\*\* ● GB Nordpool DAM Price\*\*\*

Sources:  
 \* SEMO PX  
 \*\* EPEX  
 \*\*\* Nordpool

**£102.03**  
 Weekly Average SEM DAM Price\*

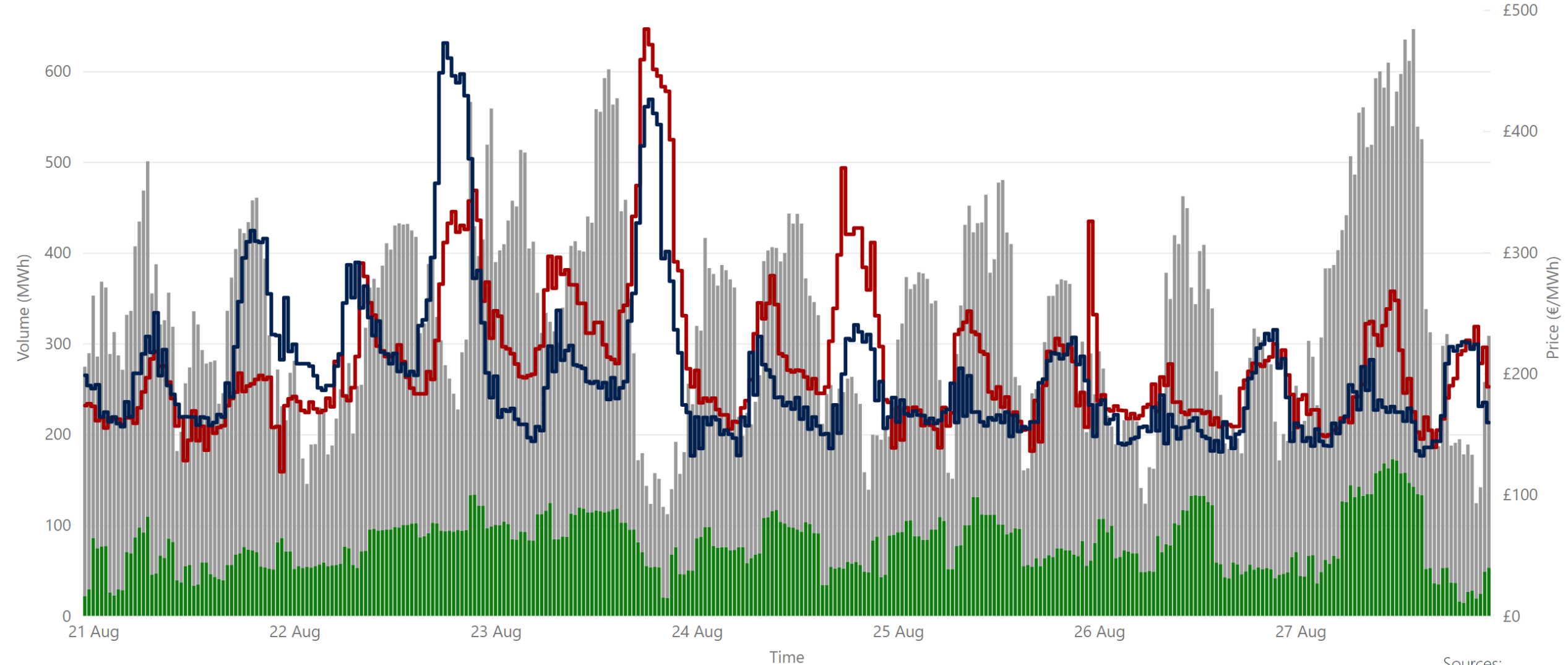
**£96.61**  
 Weekly Average GB EPEX Price\*\*

**£96.82**  
 Weekly Average GB Nordpool Price\*\*\*

**£75,960,907.95**  
 Weekly SEM DAM Market Value\*

**732,507.20**  
 Weekly SEM DAM Volume MWh\*

# Weekly Intraday Auction 1 Summary - Week Commencing 21 August 2023



Legend ● NI Volume\* ● ROI Volume\* ● SEM IDA1 Price\* ● GB IDA1 Price\*\*

Sources:  
\* SEMO PX  
\*\* EPEX

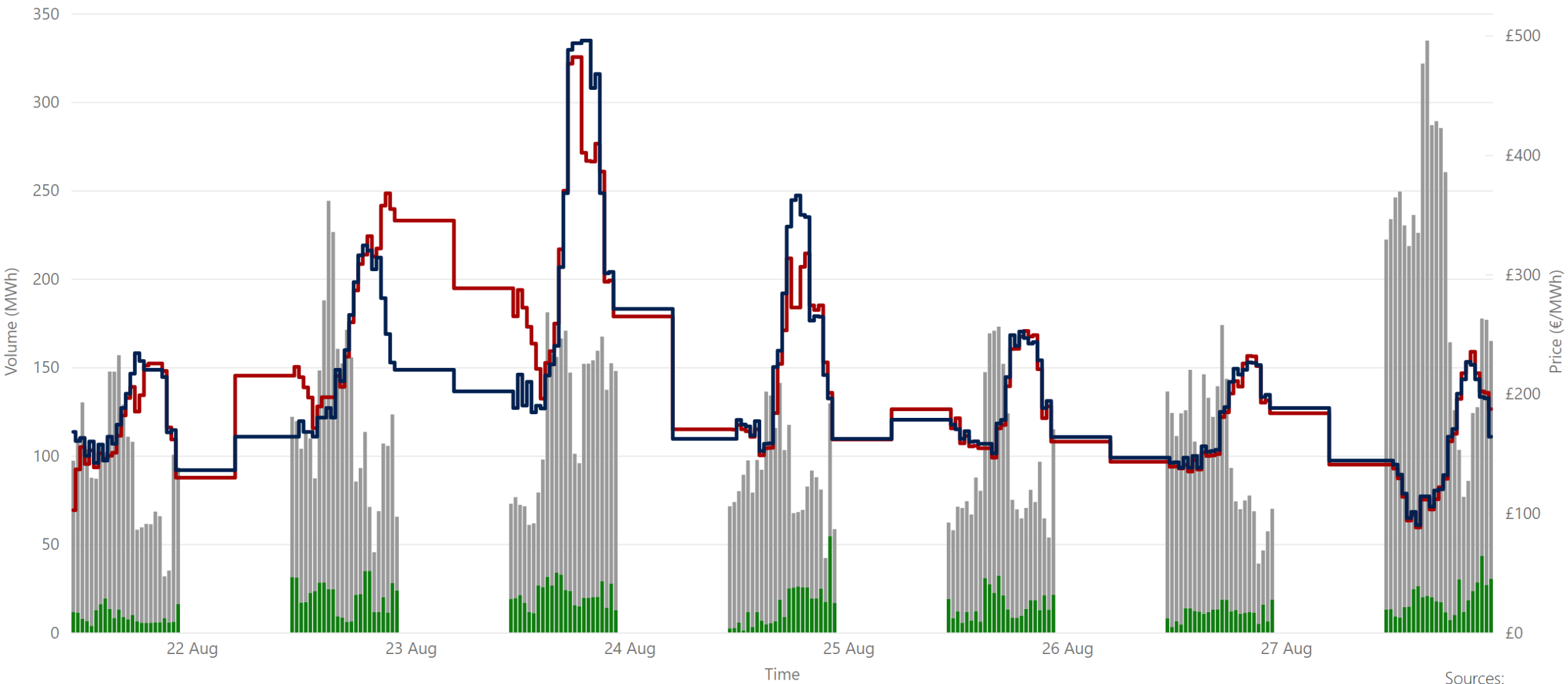
£104.34  
Weekly Average SEM IDA1 Price\*

£99.11  
Weekly Average GB IDA1 Price\*\*

£11,345,226.13  
Weekly SEM IDA1 Market Value\*

109,507.85  
Weekly SEM DAM Volume MWh\*

# Weekly Intraday Auction 2 Summary - Week Commencing 21 August 2023



Jurisdiction Volume ● NI Volume\* ● ROI Volume\* ● SEM IDA2 Price\* ● GB Price\*\*

Sources:  
\* SEMO PX  
\*\* EPEX

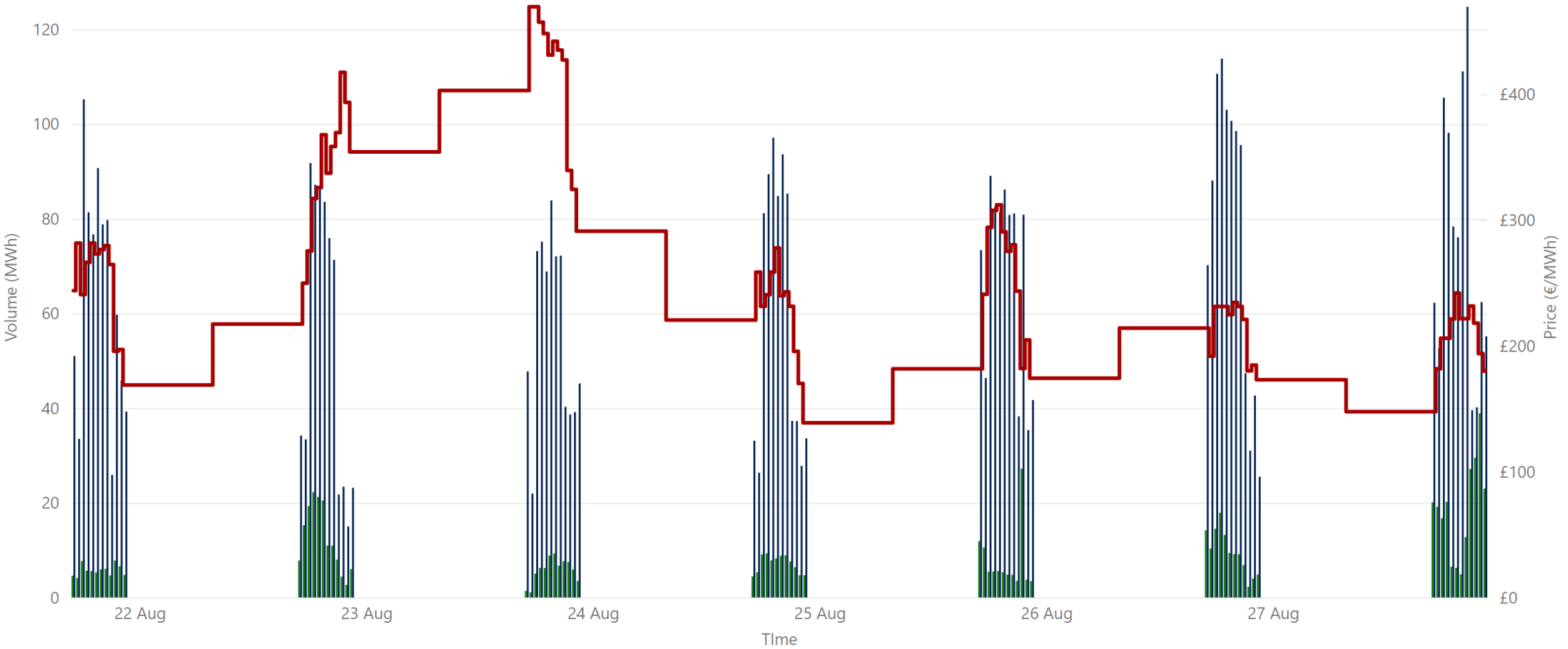
£106.05  
Weekly Average SEM IDA2 Price\*

£105.57  
Weekly Average GB IDA2 Price\*\*

£2,039,198.42  
Weekly SEM IDA2 Market Value\*

20,171.05  
Weekly SEM IDA2 Volume MWh\*

# Weekly Intraday Auction 3 Summary - Week Commencing 21 August 2023



Jurisdiction ● NI Volume\* ● ROI Volume\* ● SEM Price\*

Source: \* SEMO PX

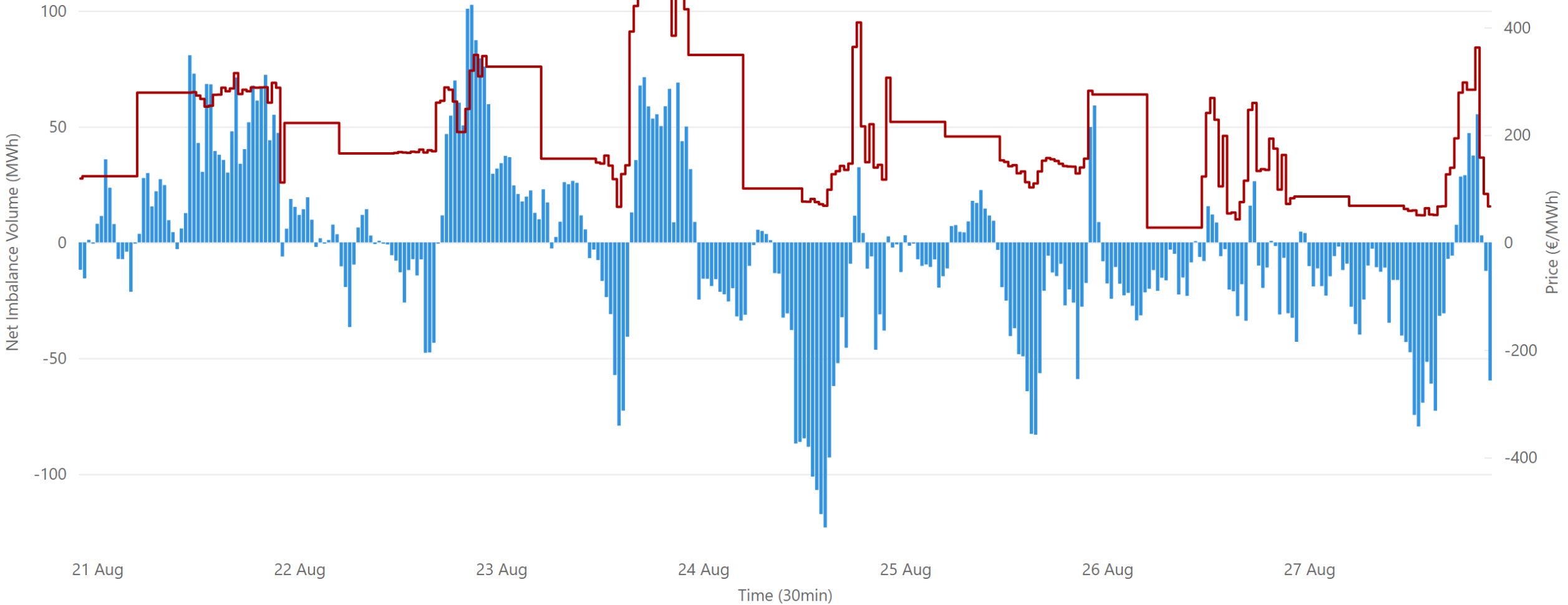
**£134.56**  
Weekly Average SEM IDA3 Price\*

**£834,122.29**  
Weekly SEM IDA3 Market Value\*

**6,275.45**  
Weekly SEM IDA3 Volume MWh\*



# Weekly Balancing Market 30 Minute Summary - Week Commencing 21 August 2023



● Net Imbalance Volume\* ● 30 Minute Imbalance Settlement Price\*

Source: \* SEMO

102.26  
Ave 30min Imbalance Price\*

€ 322.89  
Max 30min Imbalance Price\*

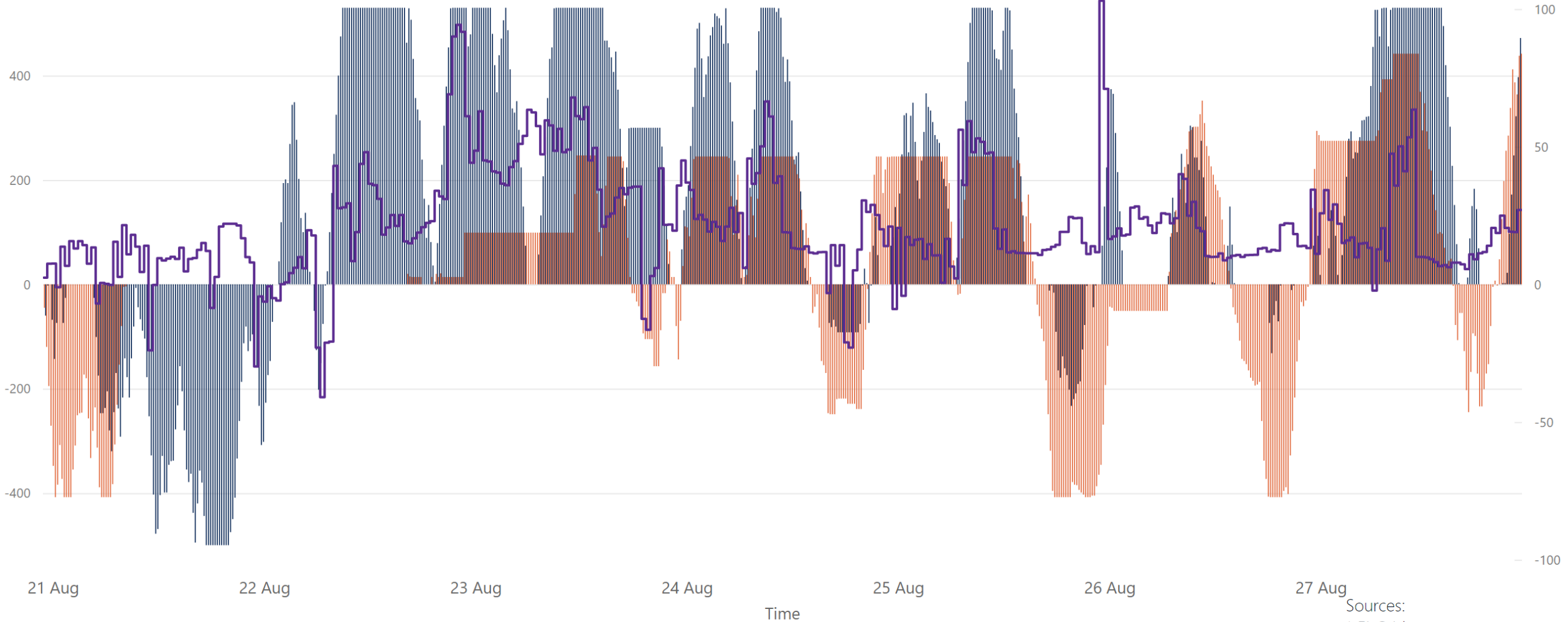
€ 0.00  
Min 30min Imbalance Price\*

51.30  
Max Net Imbalance Volume\*

-61.55  
Min Net Imbalance Volume\*



# Weekly Interconnection Summary - Week Commencing 21 August 2023



● EWIC Volume (MW)\* ● MOYLE Volume (MW)\* ● SEM-GB Spread\*\*

Sources:  
\* EirGrid  
\*\* SEMO, EPEX & Nordpool

65,236.00	-39,748.00	25,488.00	135,396.00	-28,607.00	106,789.00
Weekly MOYLE (MW) Impo...	Weekly MOYLE (MW) Export*	Weekly MOYLE (MW) NET*	Weekly EWIC (MW) Import*	Weekly EWIC (MW) Export*	Weekly EWIC (MW) NET*

# Weekly Wind Capacity Summary - Week Commencing 21 August 2023



● 15 Minute Forecast Wind (MW)\* ● 15 Minute Actual Wind (MW)\*

3256  
Max Actual Wind (MW)\*

228  
Min Actual Wind (MW)\*

3773  
Max Forecast Wind (MW)\*

292  
Min Forecast Wind (MW)\*

Sources:  
\* EirGrid