

# MMU Weekly Report - Sterling

[View in Power BI](#) ↗

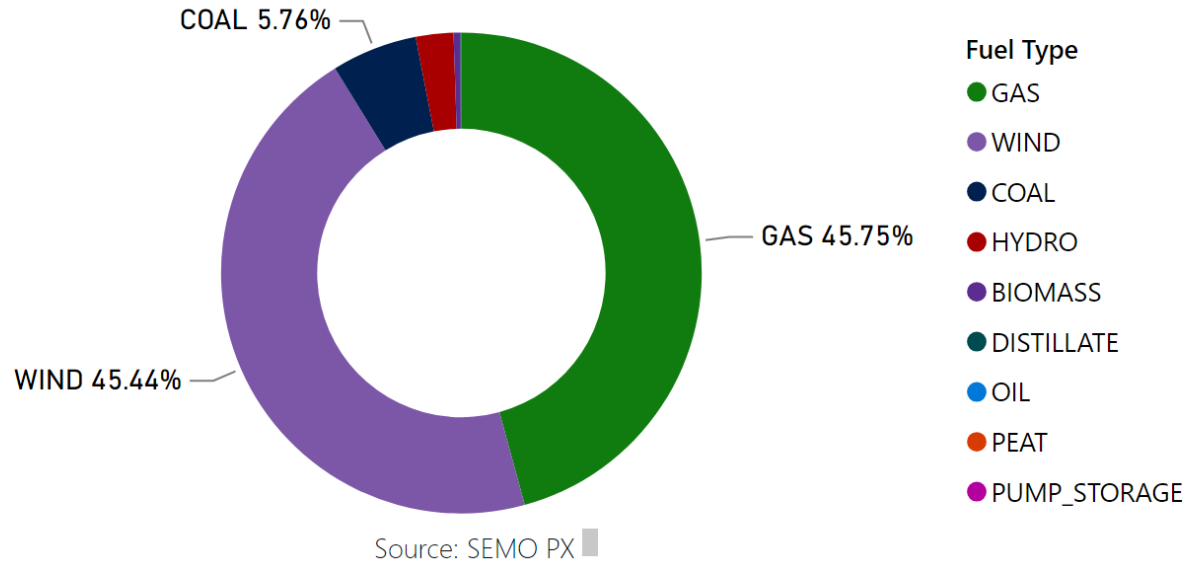
**Last data refresh:**  
09/08/2023 10:27:03 UTC

**Downloaded at:**  
09/08/2023 10:28:21 UTC

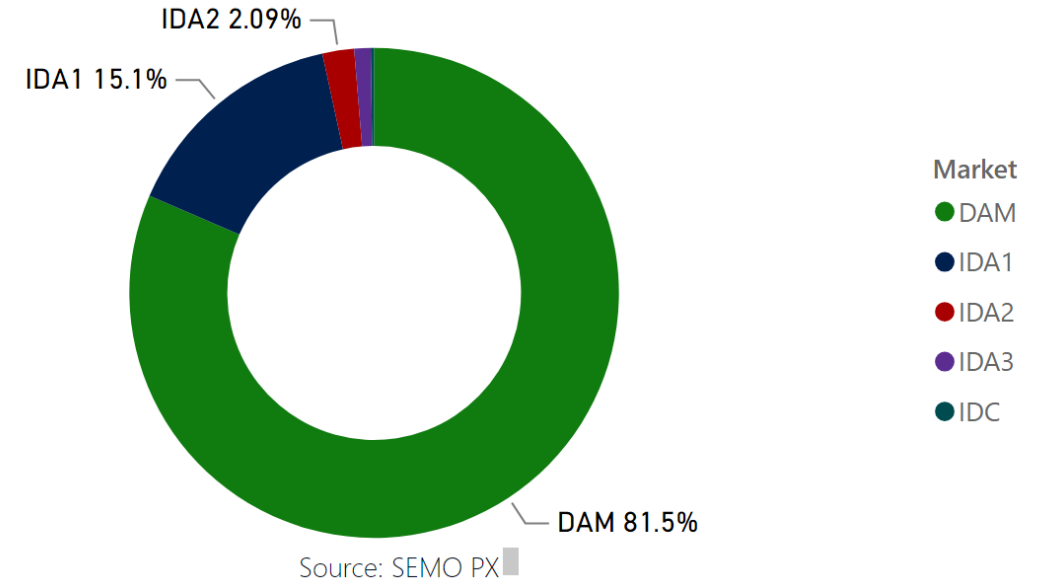


# MMU Weekly Market Summary Report - Week Commencing 31 July 2023

## Weekly Fuel Mix



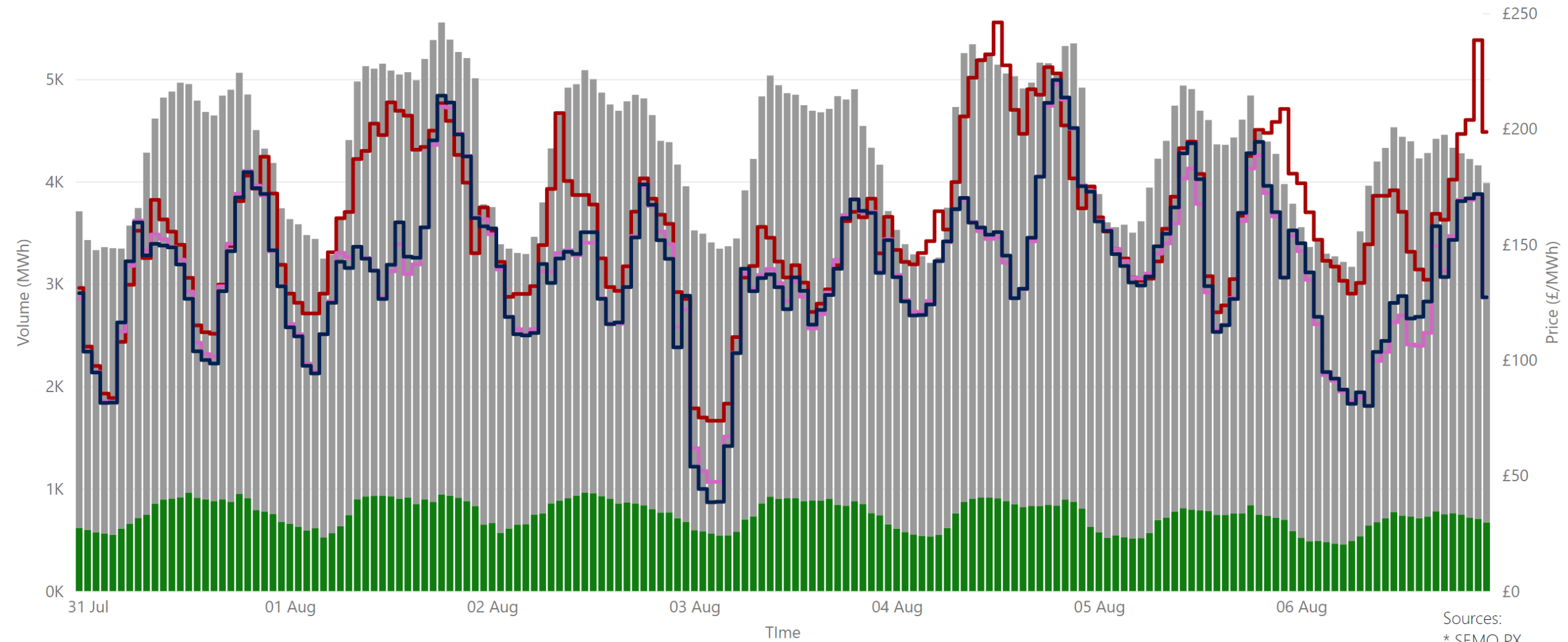
## Weekly Volume by Market



## Summary Table

Date	Daily System Demand (MWh)*	Daily DAM Price (£/MWh)**	Daily Actual Wind (MWh)*	Daily Average Gas Price (p/th)***	Daily Average Coal Price (€/t)***	Daily Average Carbon Price (€/t)***
31 July 2023	99,631.75	70.35	57,920.00	66.55	105.25	84.95
01 August 2023	101,839.50	88.82	27,450.75	66.55	105.25	84.95
02 August 2023	102,302.25	78.04	48,257.00	68.00	105.25	81.82
03 August 2023	100,787.00	65.74	54,887.50	74.28	108.50	83.15
04 August 2023	100,621.75	98.09	21,429.75	72.00	108.25	81.95
05 August 2023	93,137.75	81.84	50,604.75	72.00	108.25	81.95
06 August 2023	89,766.75	82.76	22,206.25	72.00	108.25	81.95

# Weekly Day Ahead Market Summary - Week Commencing 31 July 2023

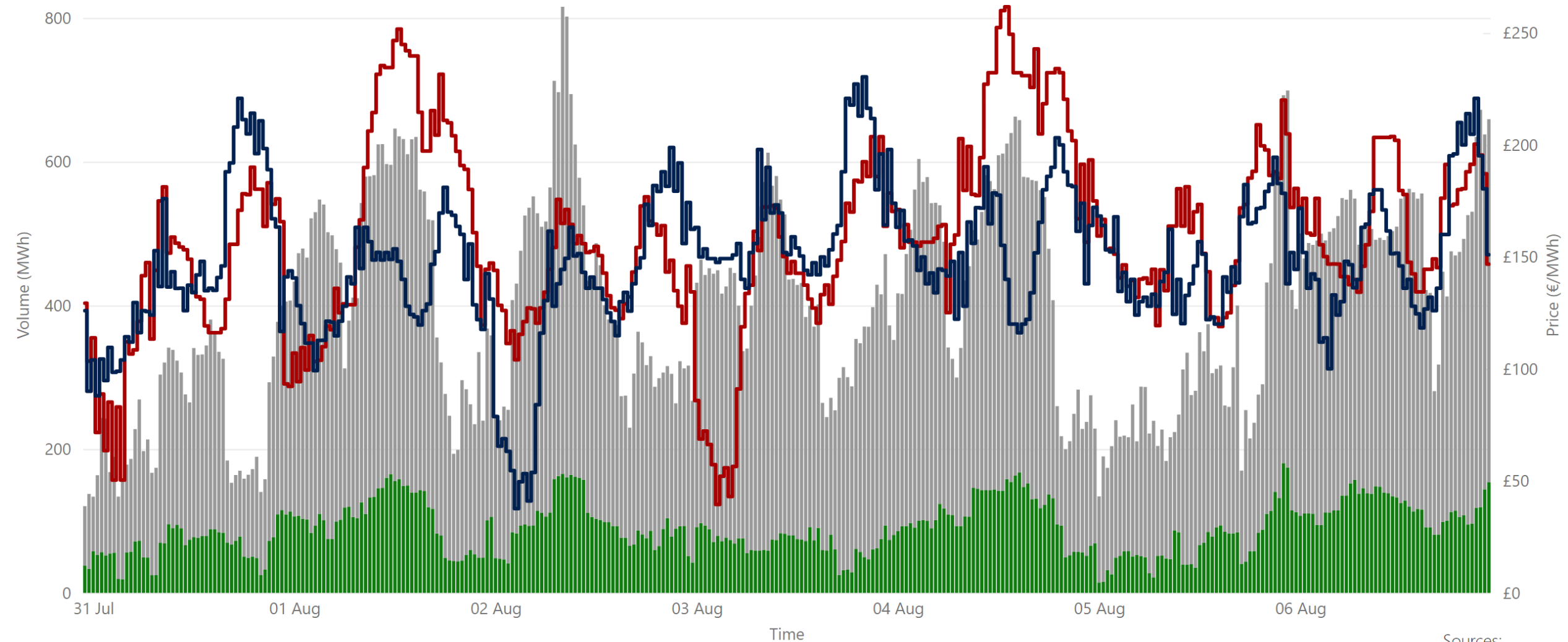


Legend ● NI Volume\* ● ROI Volume\* ● SEM DAM Price\* ● GB EPEX DAM Price\*\* ● GB Nordpool DAM Price\*\*\*

Sources:  
 \* SEMO PX  
 \*\* EPEX  
 \*\*\* Nordpool

£79.39 Weekly Average SEM DAM Price\*     
 £69.31 Weekly Average GB EPEX Price\*\*     
 £69.56 Weekly Average GB Nordpool Price\*\*\*     
 £58,782,555.29 Weekly SEM DAM Market Value\*     
 725,799.50 Weekly SEM DAM Volume MWh\*

# Weekly Intraday Auction 1 Summary - Week Commencing 31 July 2023



Legend ● NI Volume\* ● ROI Volume\* ● SEM IDA1 Price\* ● GB IDA1 Price\*\*

Sources:  
\* SEMO PX  
\*\* EPEX

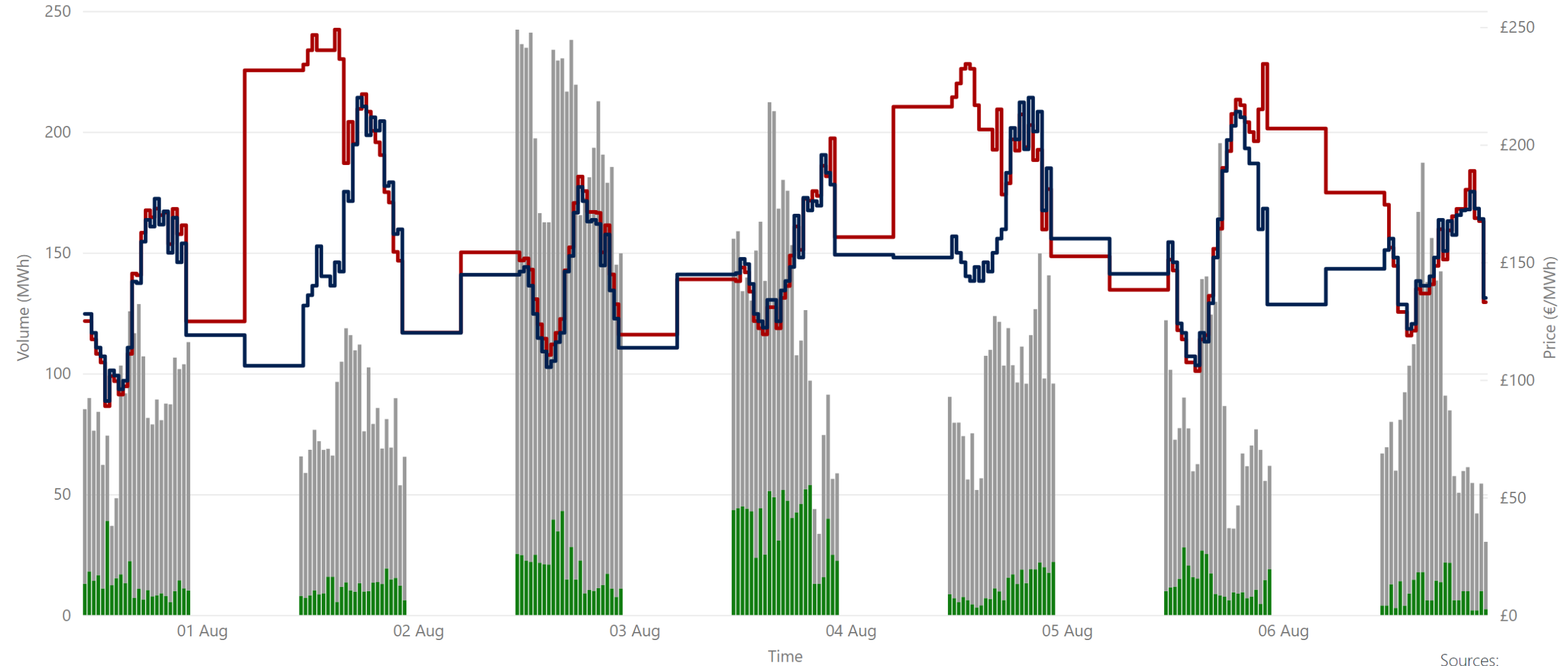
**£79.19**  
Weekly Average SEM IDA1 Price\*

**£74.30**  
Weekly Average GB IDA1 Price\*\*

**£10,979,168.21**  
Weekly SEM IDA1 Market Value\*

**134,500.85**  
Weekly SEM DAM Volume MWh\*

# Weekly Intraday Auction 2 Summary - Week Commencing 31 July 2023



Jurisdiction Volume ● NI Volume\* ● ROI Volume\* ● SEM IDA2 Price\* ● GB Price\*\*

Sources:  
\* SEMO PX  
\*\* EPEX

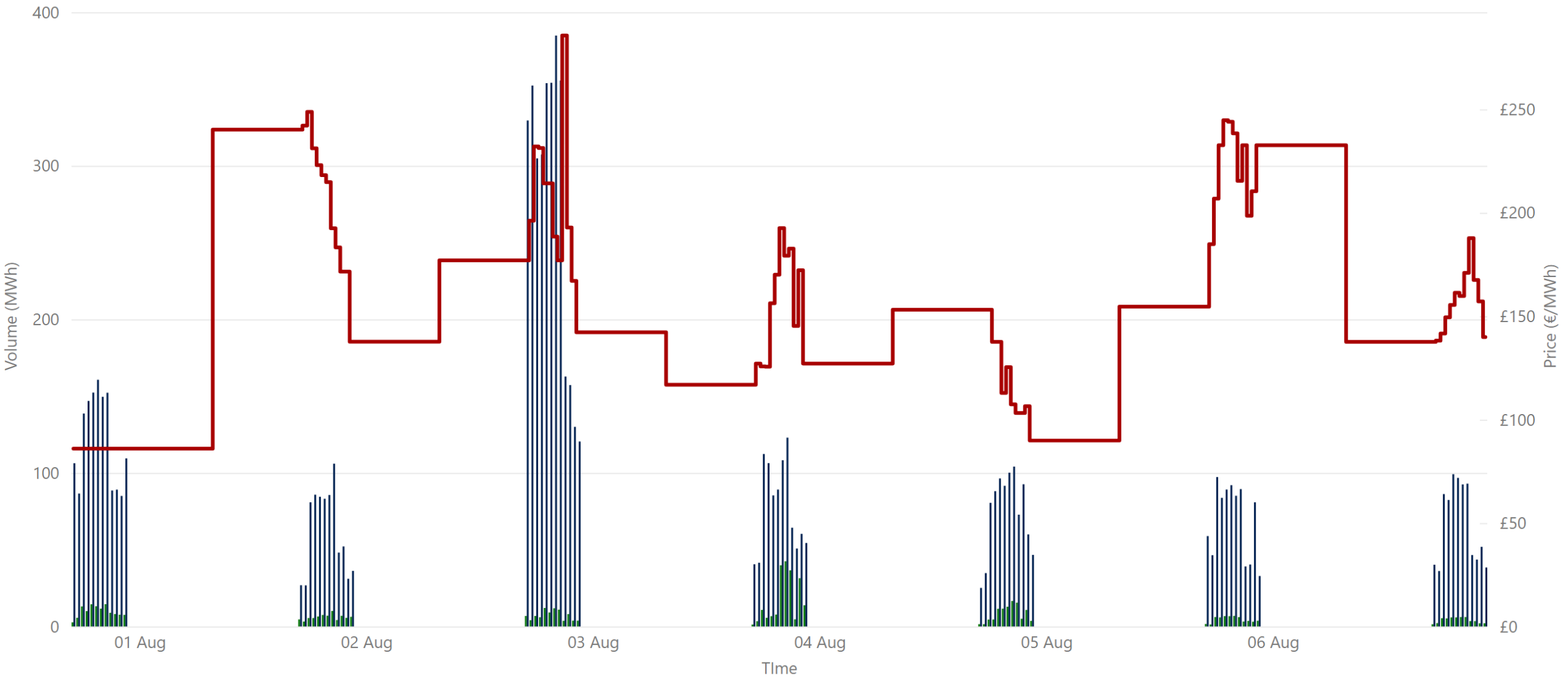
£83.50  
Weekly Average SEM IDA2 Price\*

£77.21  
Weekly Average GB IDA2 Price\*\*

£1,496,333.92  
Weekly SEM IDA2 Market Value\*

18,605.55  
Weekly SEM IDA2 Volume MWh\*

# Weekly Intraday Auction 3 Summary - Week Commencing 31 July 2023



Jurisdiction ● NI Volume\* ● ROI Volume\* ● SEM Price\*

Source: \* SEMO PX

**£81.49**  
Weekly Average SEM IDA3 Price\*

**£813,348.42**  
Weekly SEM IDA3 Market Value\*

**9,680.90**  
Weekly SEM IDA3 Volume MWh\*

# Weekly Intraday Continuous Summary - Week Commencing 31 July 2023



Source: \* SEMO PX

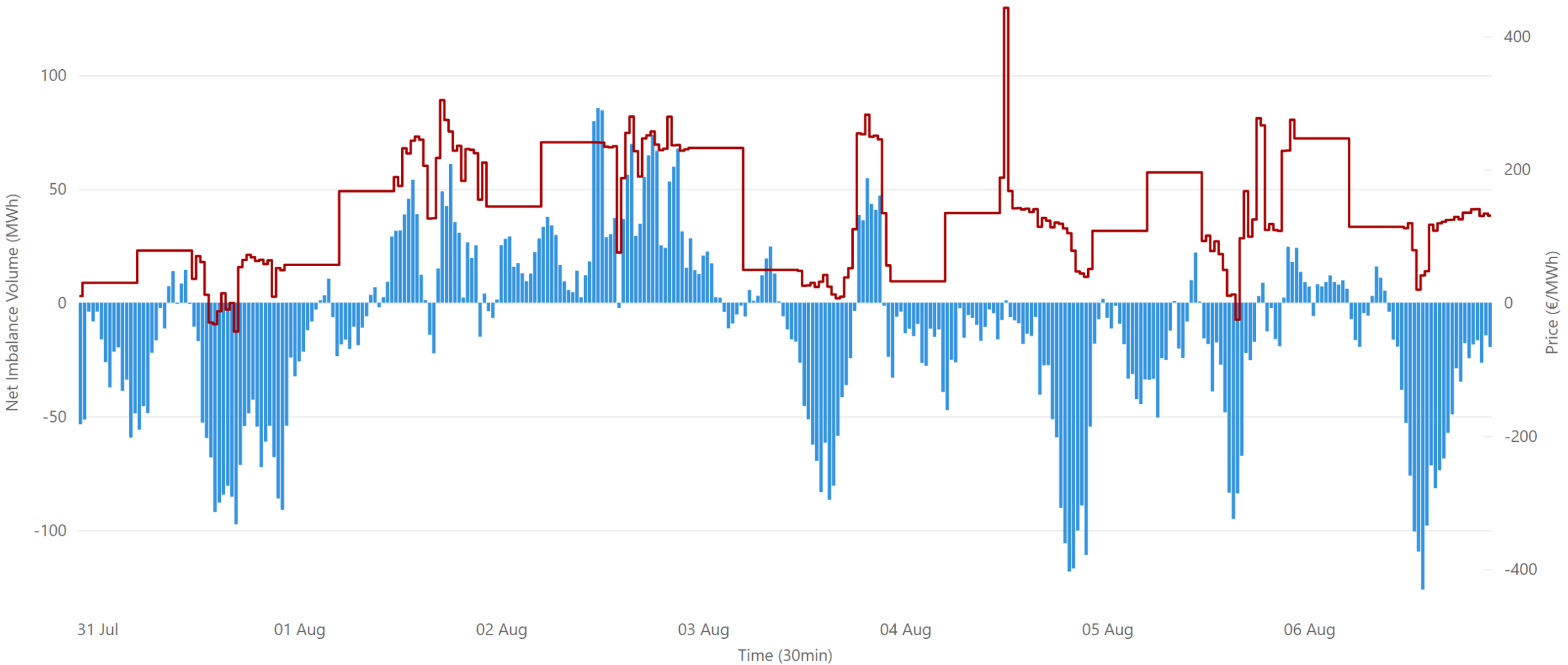
£106.95  
Weekly SEM IDC Average Price\*

£109.26  
Weekly SEM IDC Max Price\*

£103.36  
Weekly SEM IDC Min Price\*

1,974.20  
Weekly SEM IDC Volume MWh\*

# Weekly Balancing Market 30 Minute Summary - Week Commencing 31 July 2023



● Net Imbalance Volume\* ● 30 Minute Imbalance Settlement Price\*

Source: \* SEMO

66.64

Ave 30min Imbalance Price\*

€ 257.28

Max 30min Imbalance Price\*

-€ 44.26

Min 30min Imbalance Price\*

42.80

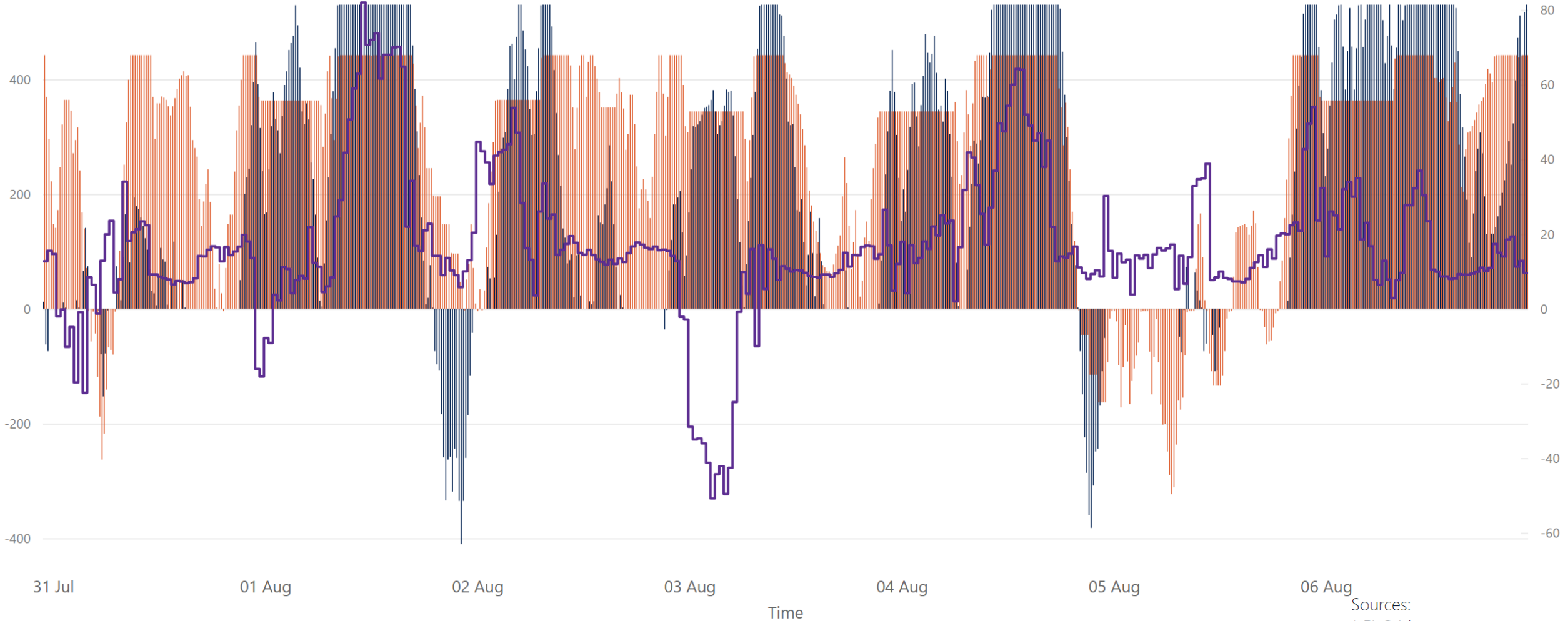
Max Net Imbalance Volume\*

-63.08

Min Net Imbalance Volume\*



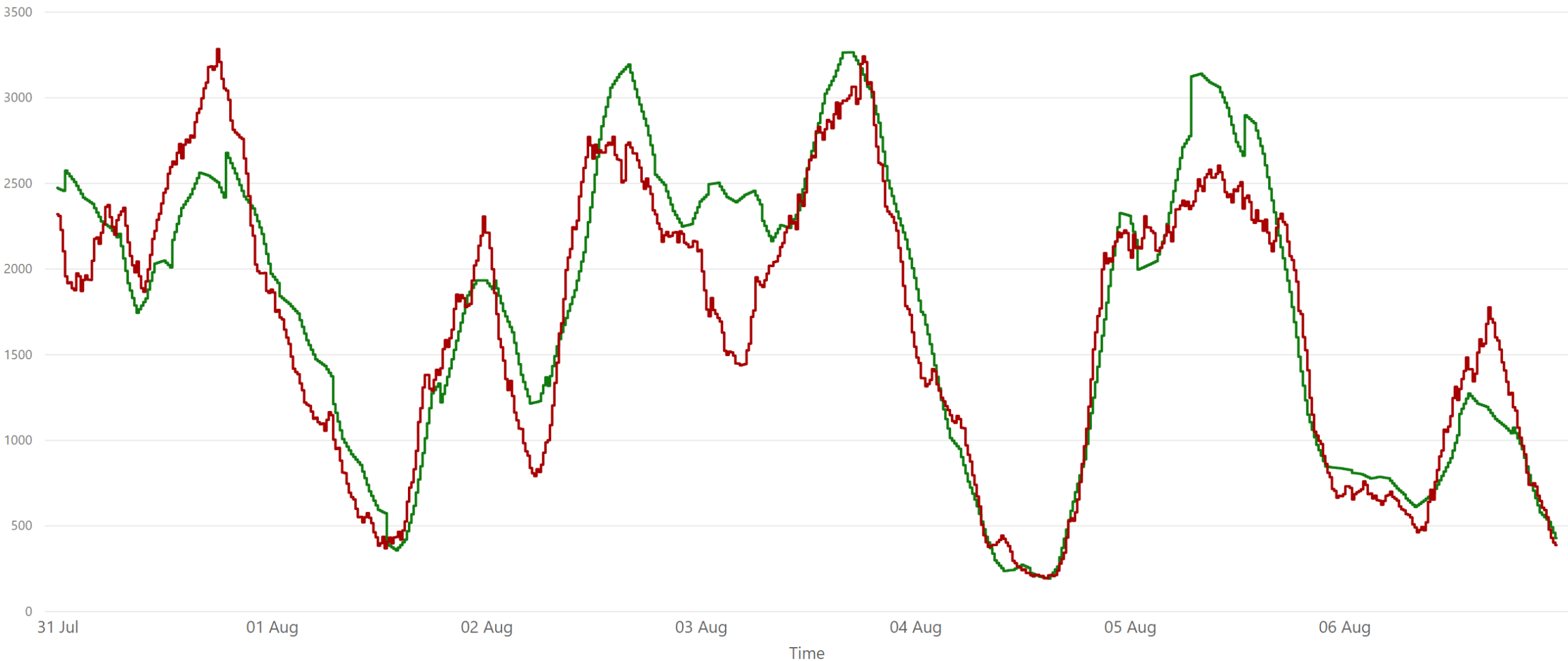
# Weekly Interconnection Summary - Week Commencing 31 July 2023



Sources:  
 \* EirGrid  
 \*\* SEMO, EPEX & Nordpool

<b>194,590.00</b>	<b>-7,953.00</b>	<b>186,637.00</b>	<b>147,682.00</b>	<b>-7,736.00</b>	<b>139,946.00</b>
Weekly MOYLE (MW) Impo...	Weekly MOYLE (MW) Export*	Weekly MOYLE (MW) NET*	Weekly EWIC (MW) Import*	Weekly EWIC (MW) Export*	Weekly EWIC (MW) NET*

# Weekly Wind Capacity Summary - Week Commencing 31 July 2023



● 15 Minute Forecast Wind (MW)\* ● 15 Minute Actual Wind (MW)\*

Sources:  
\* EirGrid

**3281**  
Max Actual Wind (MW)\*

**191**  
Min Actual Wind (MW)\*

**3262**  
Max Forecast Wind (MW)\*

**189**  
Min Forecast Wind (MW)\*