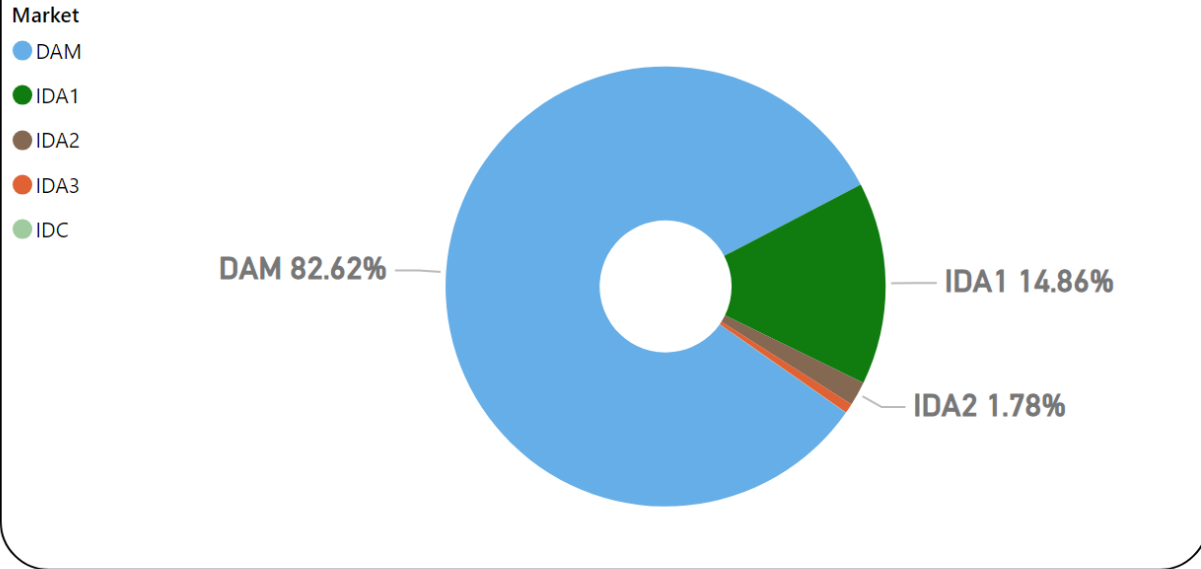


# MMU Weekly Market Summary Report

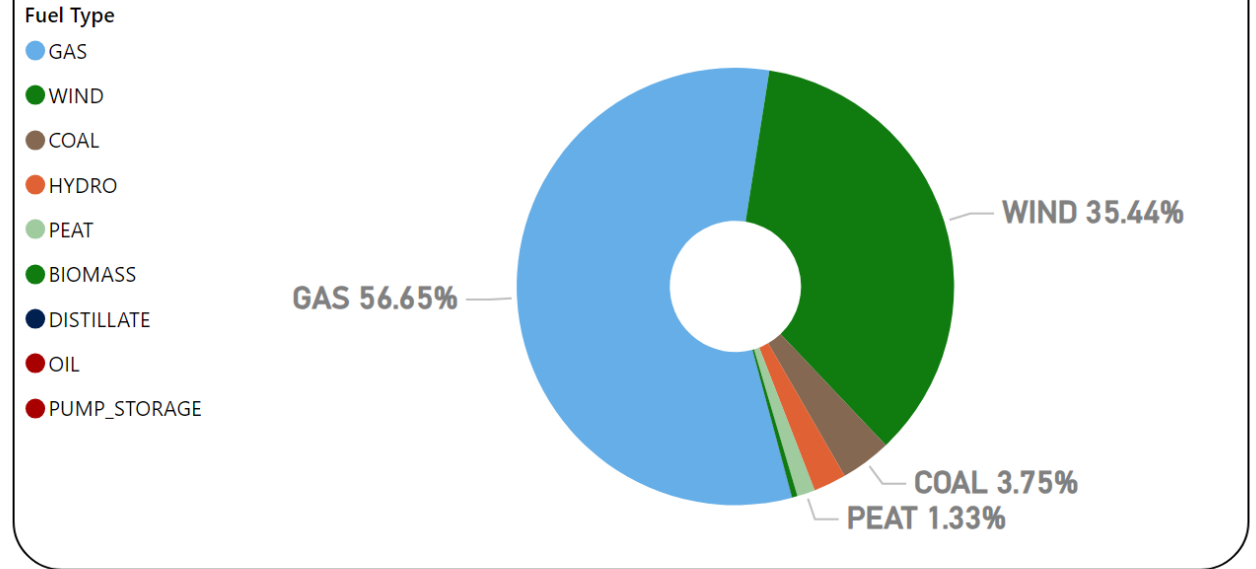
## - Week Commencing 20 November 2023

Weekly Volume by Market



Source: SEMO PX

Weekly Fuel Mix



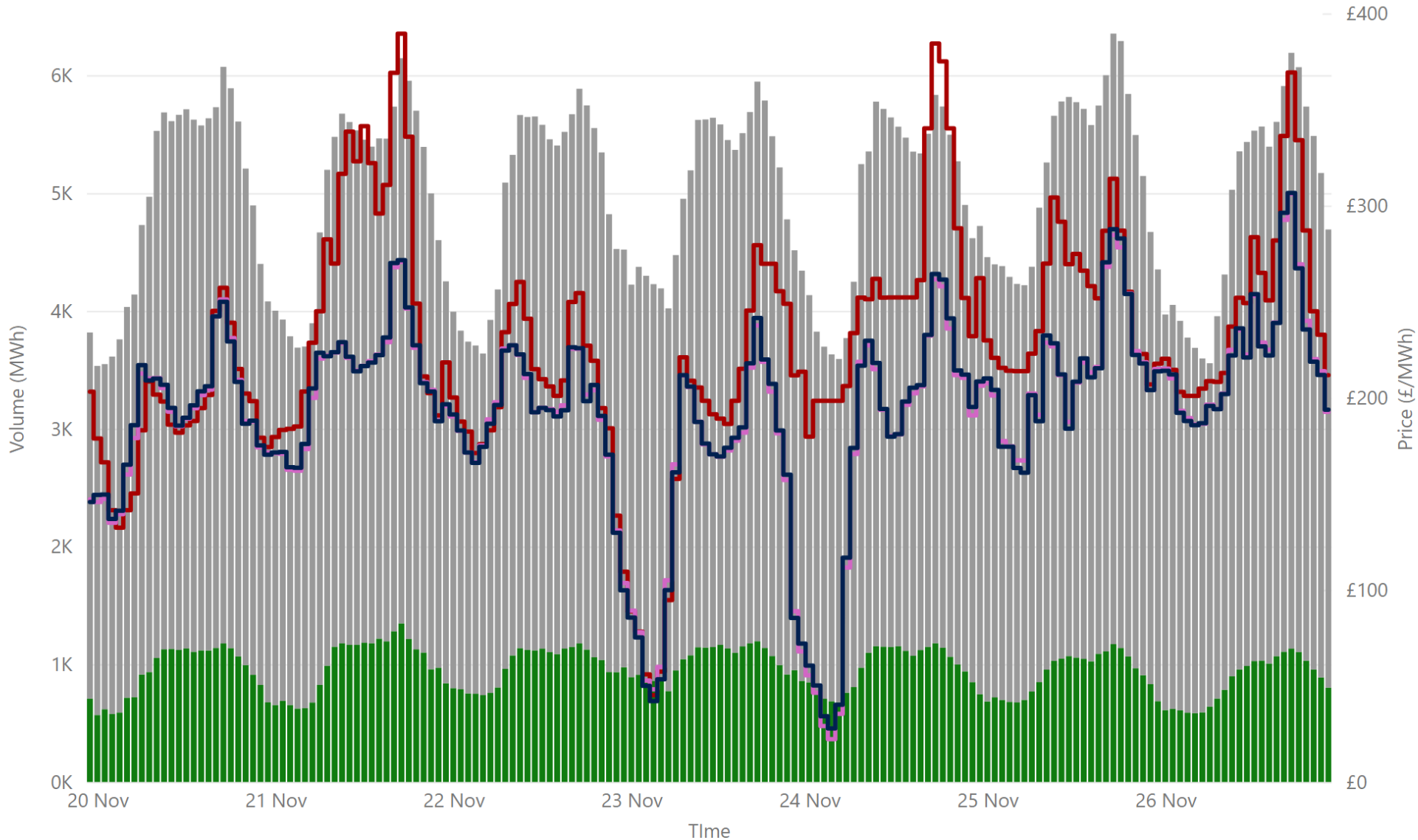
Source: SEMO PX

Summary Table

Date	Daily System Demand (MWh)*	Daily Dam Price (£/MWh)**	Daily Actual WInd (MWh)*	Daily Average Gas Price (p/th)***	Daily Average Coal Price (€/t)***	Daily Average Carbon Price (€/t)***
20 November 2023	117,345.25	97.24	76,331.00	114.50	122.50	76.35
21 November 2023	121,483.50	136.40	27,715.75	110.50	122.40	74.97
22 November 2023	118,946.00	105.90	66,599.00	108.80	122.85	74.86
23 November 2023	118,708.50	92.78	61,095.75	120.05	123.65	76.48
24 November 2023	119,235.50	130.84	18,592.50	120.05	123.75	76.43
25 November 2023	114,389.75	126.97	12,378.25	120.05	123.75	76.43
26 November 2023	109,078.50	127.05	19,918.50	120.05	123.75	76.43

Sources: \* EirGrid \*\* SEMO PX \*\*\* Oil Market Journal

# Weekly Day Ahead Market Summary - Week Commencing 20 November 2023



£113.86  
 Weekly Average SEM DAM Price\*

£96.28  
 Weekly Average GB EPEX Price\*\*

£96.51  
 Weekly Average GB Nordpool Price\*\*\*

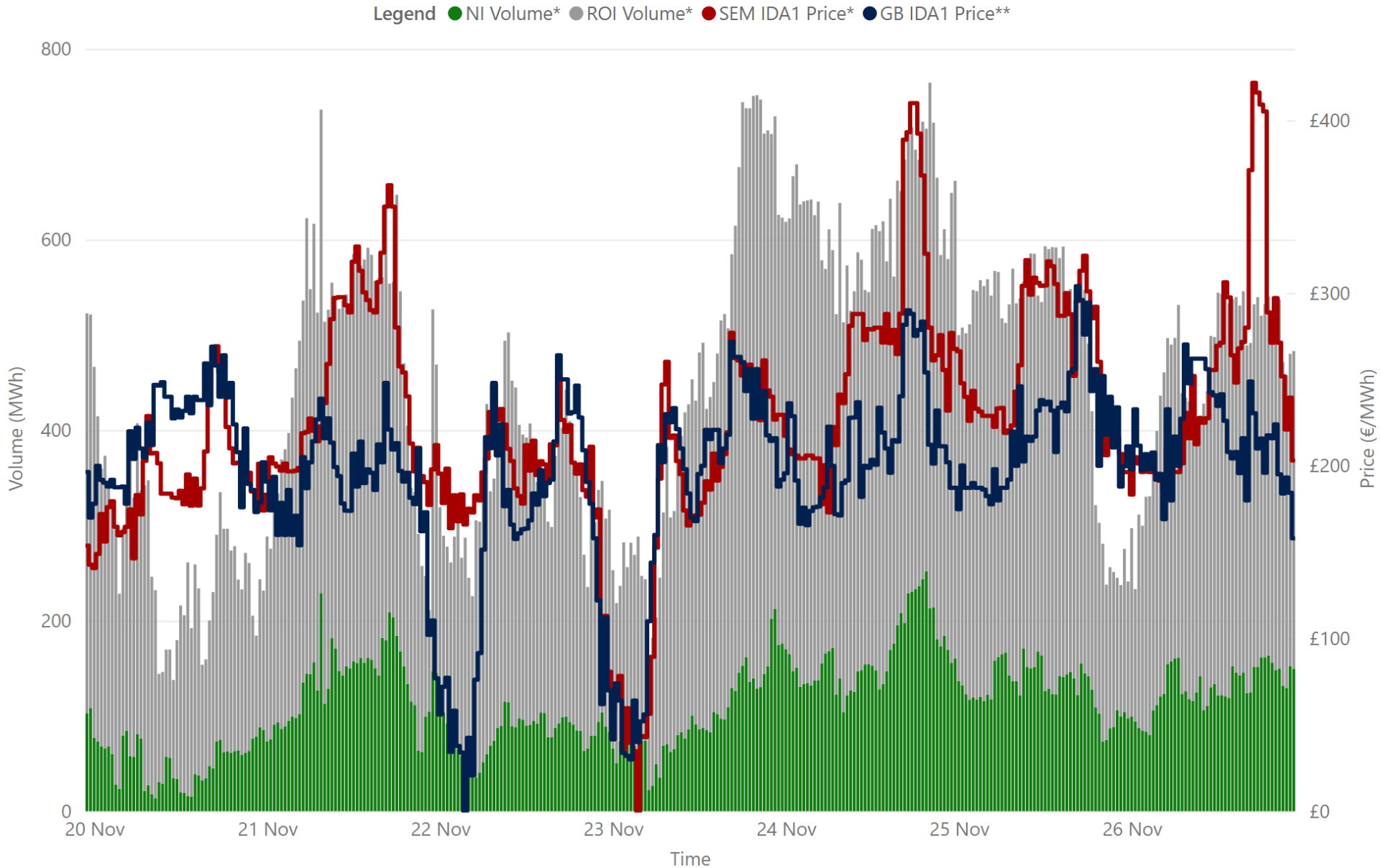
£97,675,005.72  
 Weekly SEM DAM Market Value\*

836,687.70  
 Weekly SEM DAM Volume MWh\*

**Legend** ● NI Volume\* ● ROI Volume\* ● SEM DAM Price\* ● GB EPEX DAM Price\*\* ● GB Nordpool DAM Price\*\*\*

Sources:  
 \* SEMO PX  
 \*\* EPEX  
 \*\*\* Nordpool

# Weekly Intraday Auction 1 Summary - Week Commencing 20 November 2023



£113.17  
Weekly Average SEM IDA1 Price\*

£98.99  
Weekly Average GB IDA1 Price\*\*

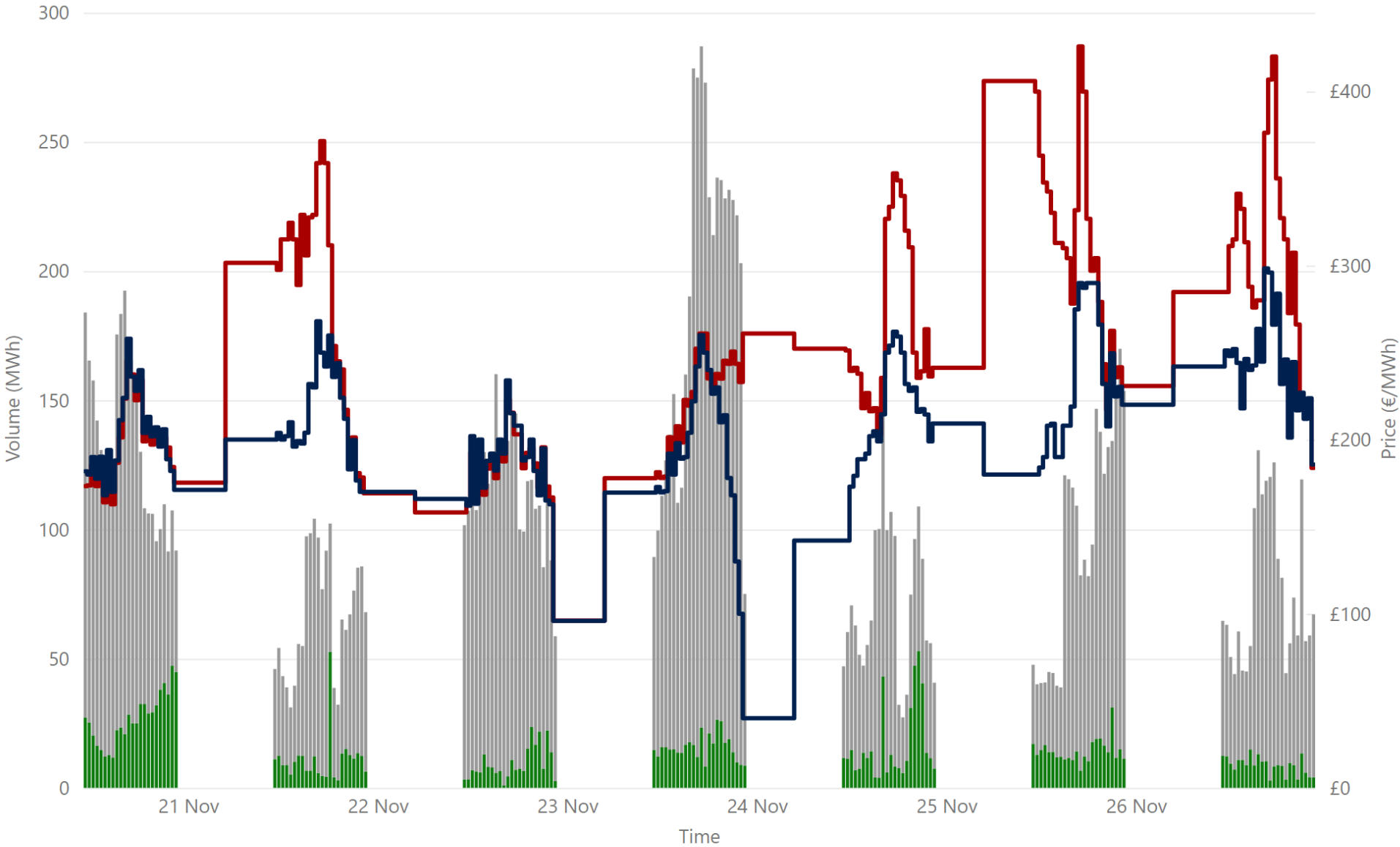
£18,022,081.29  
Weekly SEM IDA1 Market Value\*

150,513.95  
Weekly SEM DAM Volume MWh\*

Sources:  
\* SEMO PX  
\*\* EPEX

# Weekly Intraday Auction 2 Summary - Week Commencing 20 November 2023

Jurisdiction Volume ● NI Volume\* ● ROI Volume\* ● SEM IDA2 Price\* ● GB Price\*\*



£125.69  
Weekly Average SEM IDA2 Price\*

£105.02  
Weekly Average GB IDA2 Price\*\*

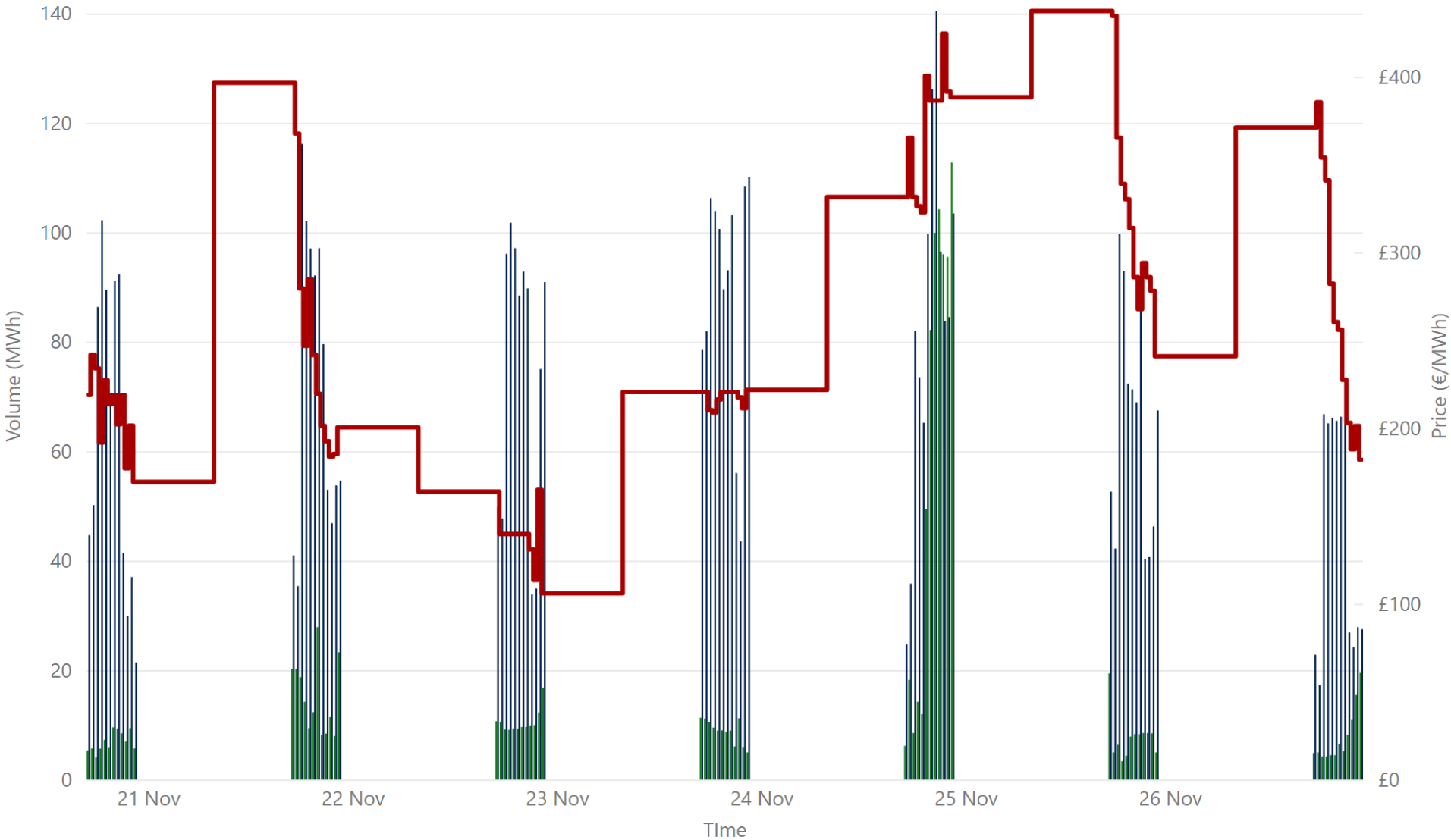
£2,170,847.38  
Weekly SEM IDA2 Market Value\*

18,013.10  
Weekly SEM IDA2 Volume MWh\*

Sources:  
\* SEMO PX  
\*\* EPEX

# Weekly Intraday Auction 3 Summary - Week Commencing 20 November 2023

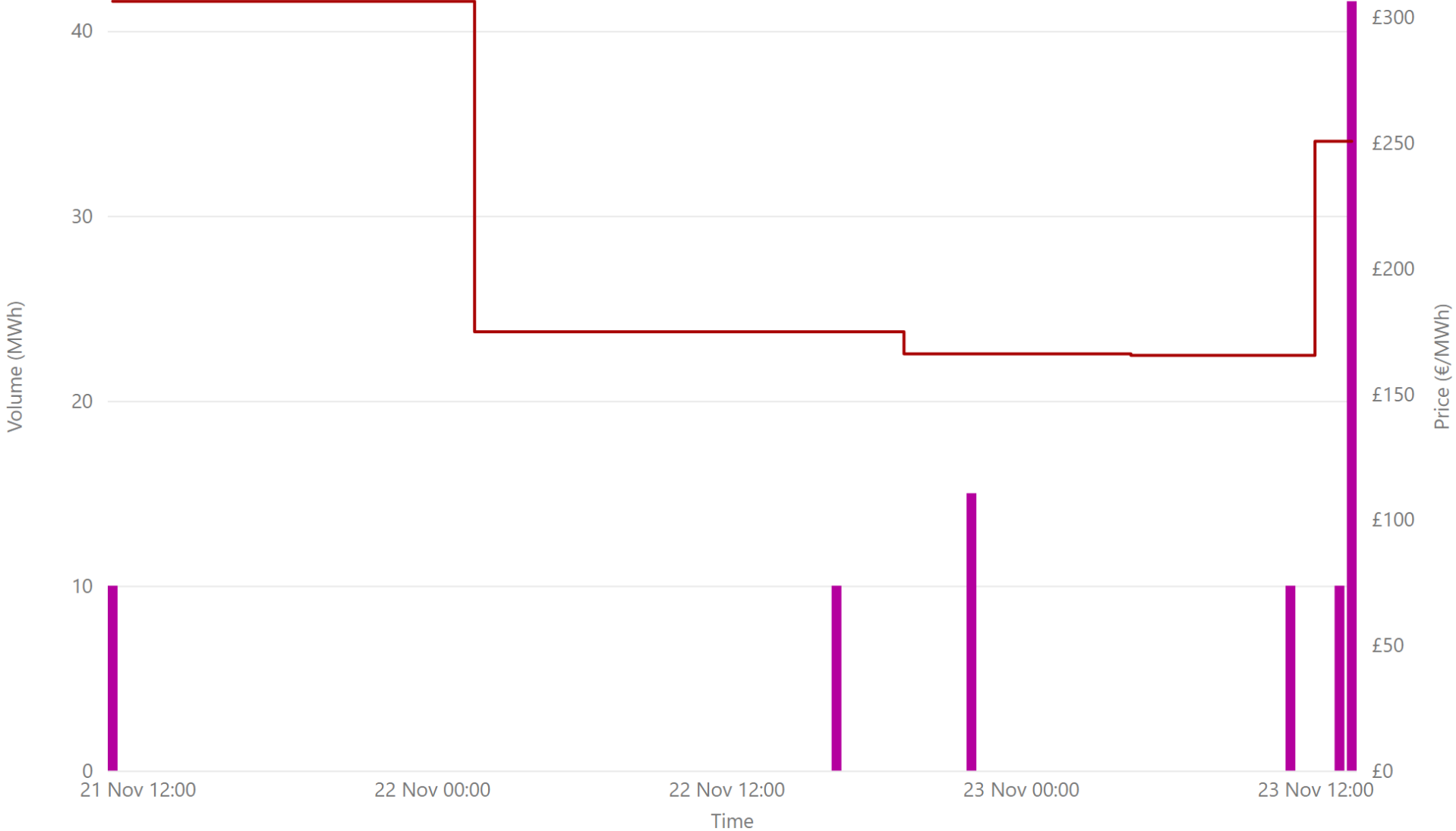
Jurisdiction ● NI Volume\* ● ROI Volume\* ● SEM Price\*



£127.06  
Weekly Average SEM IDA3 Price\*  
£973,790.89  
Weekly SEM IDA3 Market Value\*  
7,326.50  
Weekly SEM IDA3 Volume MWh\*

# Weekly Intraday Continuous Summary - Week Commencing 21 November 2023

● IDC Volume\* ● Weighted Average IDC Price\*



£109.45  
Weekly SEM IDC Average Price\*

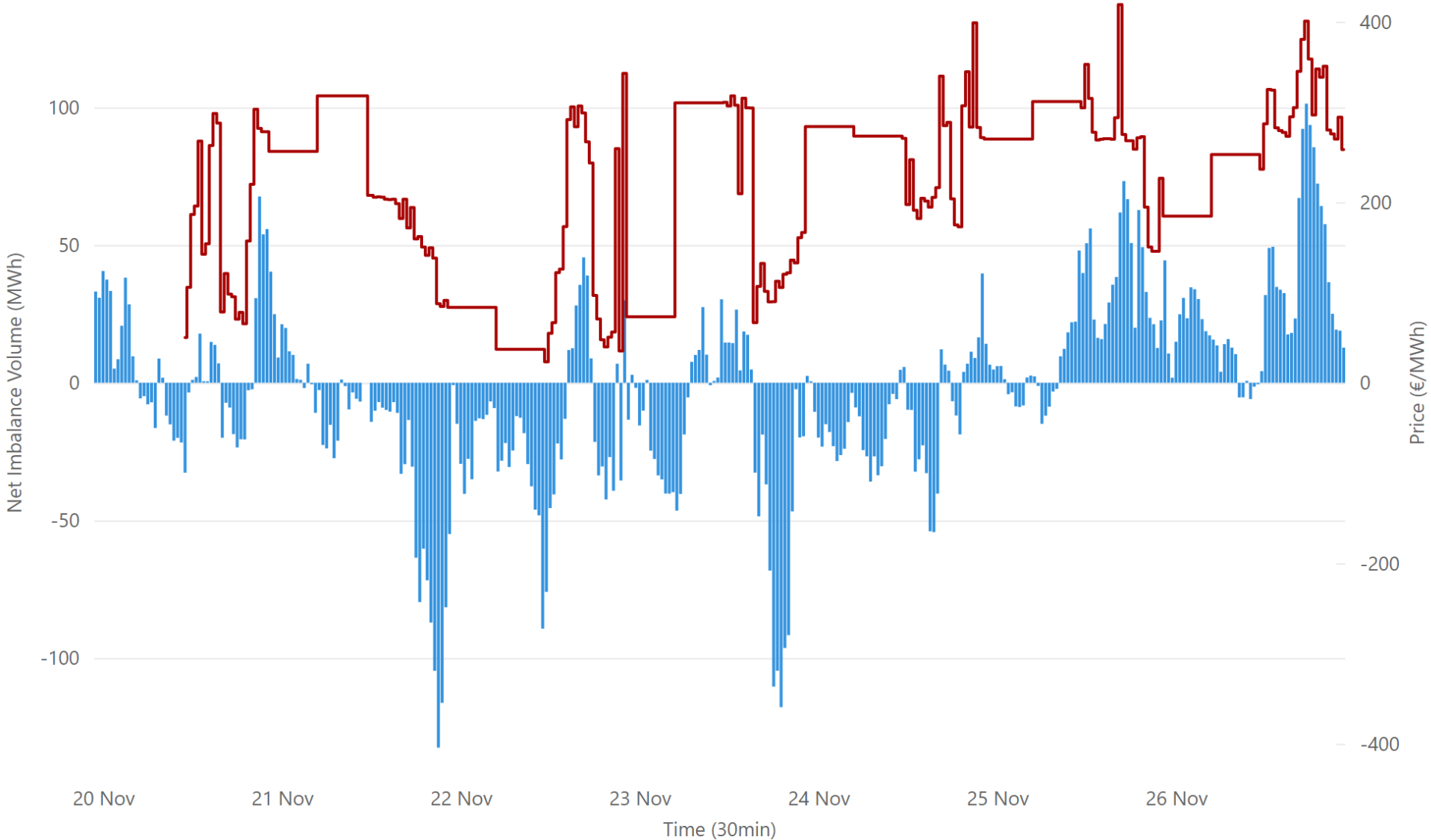
£109.45  
Weekly SEM IDC Max Price\*

£109.45  
Weekly SEM IDC Min Price\*

96.60  
Weekly SEM IDC Volume MWh\*

# Weekly Balancing Market 30 Minute Summary - Week Commencing 20 November 2023

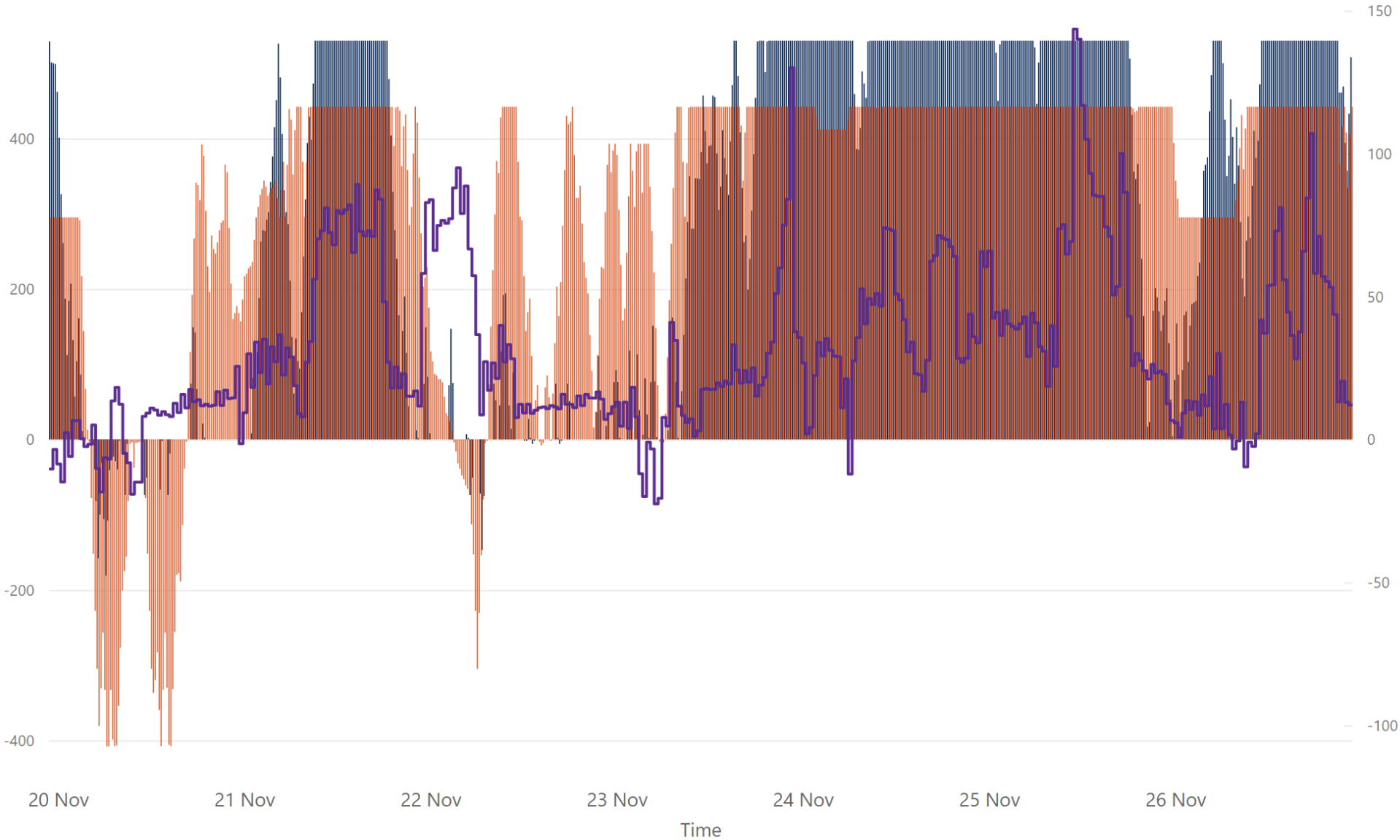
● Net Imbalance Volume\* ● 30 Minute Imbalance Settlement Price\*



108.34  
Ave 30min Imbalance Price\*  
€ 241.02  
Max 30min Imbalance Price\*  
-€ 4.04  
Min 30min Imbalance Price\*  
50.69  
Max Net Imbalance Volume\*  
-66.27  
Min Net Imbalance Volume\*

# Weekly Interconnection Summary - Week Commencing 20 November 2023

● EWIC Volume (MW)\* ● MOYLE Volume (MW)\* ● SEM-GB Spread\*\*



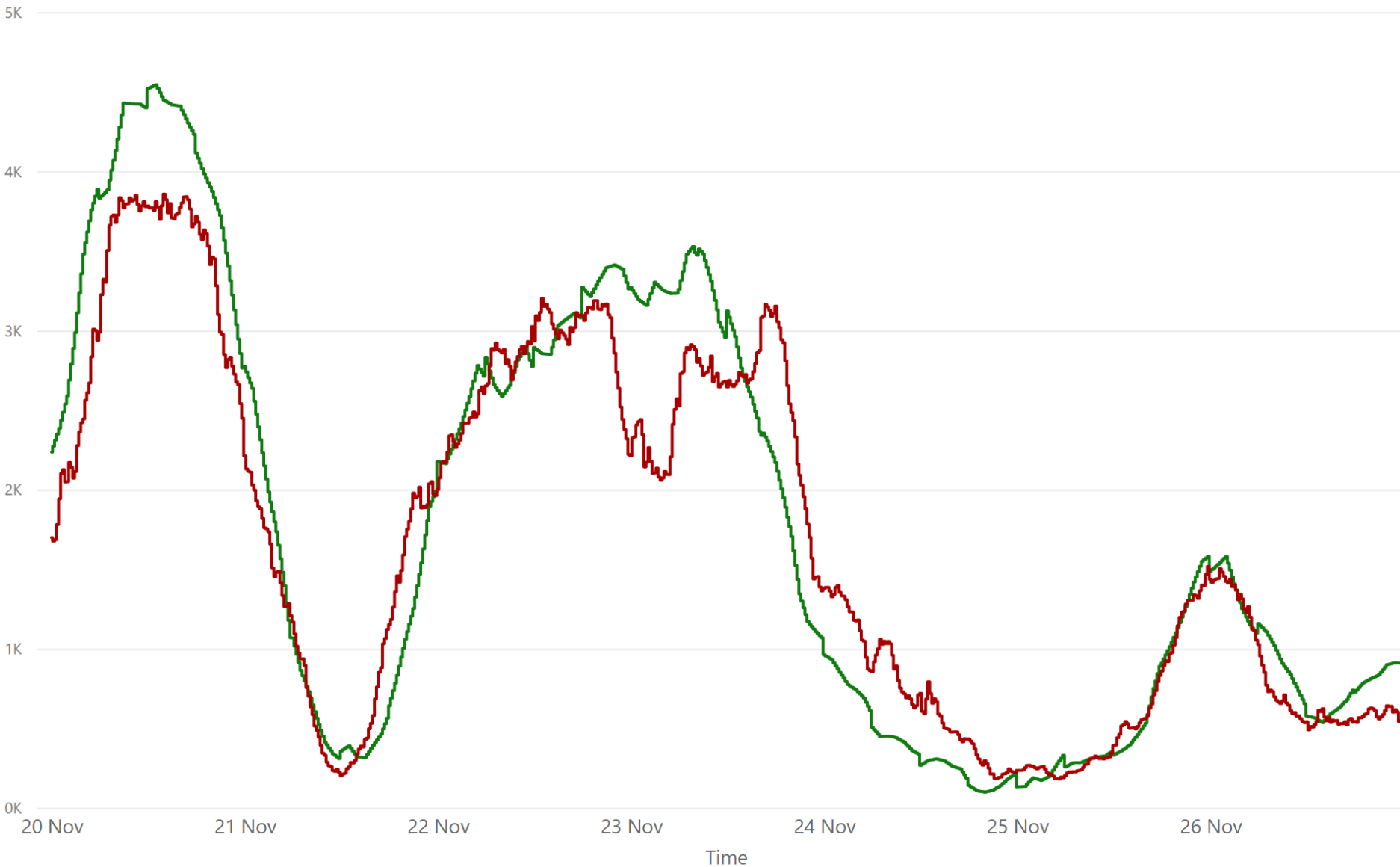
222,398.00  
Weekly MOYLE (MW) Import\*  
-13,008.00  
Weekly MOYLE (MW) Export\*  
209,390.00  
Weekly MOYLE (MW) NET\*  
197,938.00  
Weekly EWIC (MW) Import\*  
-1,710.00  
Weekly EWIC (MW) Export\*  
196,228.00  
Weekly EWIC (MW) NET\*

Sources:  
\* EirGrid  
\*\* SEMO, EPEX & Nordpool



# Weekly Wind Capacity Summary - Week Commencing 20 November 2023

● 15 Minute Forecast Wind (MW)\* ● 15 Minute Actual Wind (MW)\*



**3857**  
Max Actual Wind (MW)\*

**181**  
Min Actual Wind (MW)\*

**4544**  
Max Forecast Wind (MW)\*

**99**  
Min Forecast Wind (MW)\*