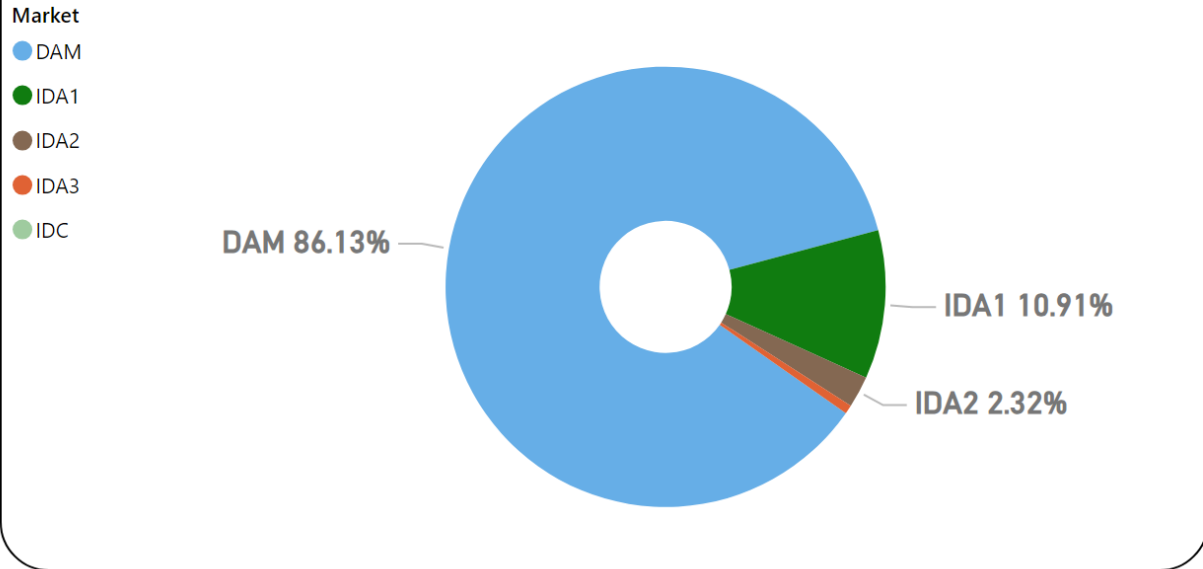


# MMU Weekly Market Summary Report

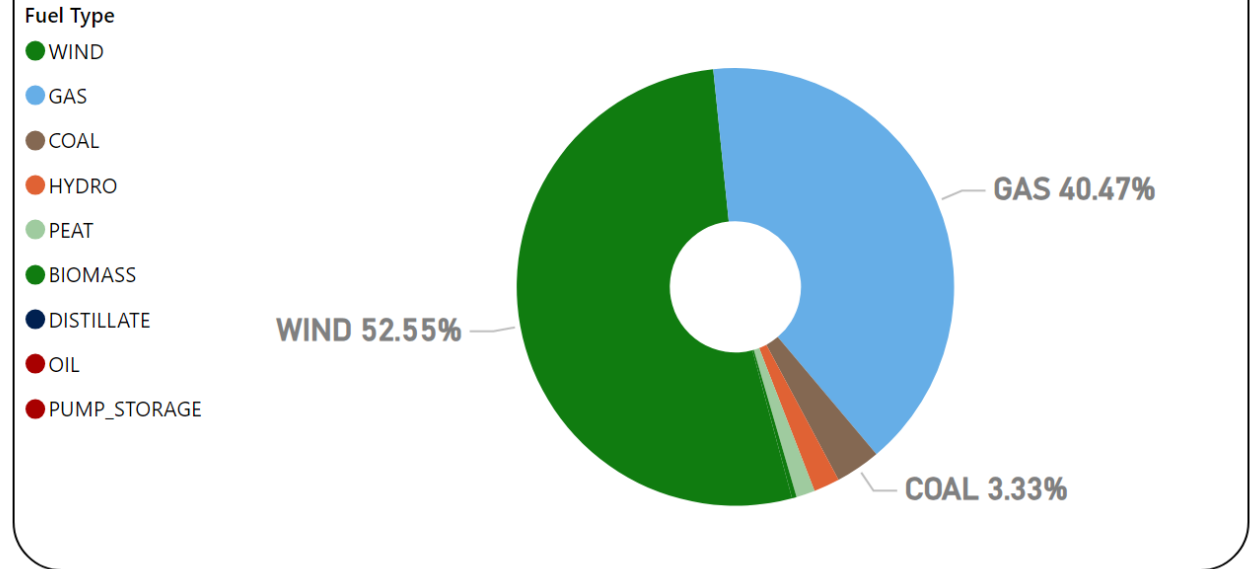
## - Week Commencing 04 December 2023

**Weekly Volume by Market**



Source: SEMO PX

**Weekly Fuel Mix**



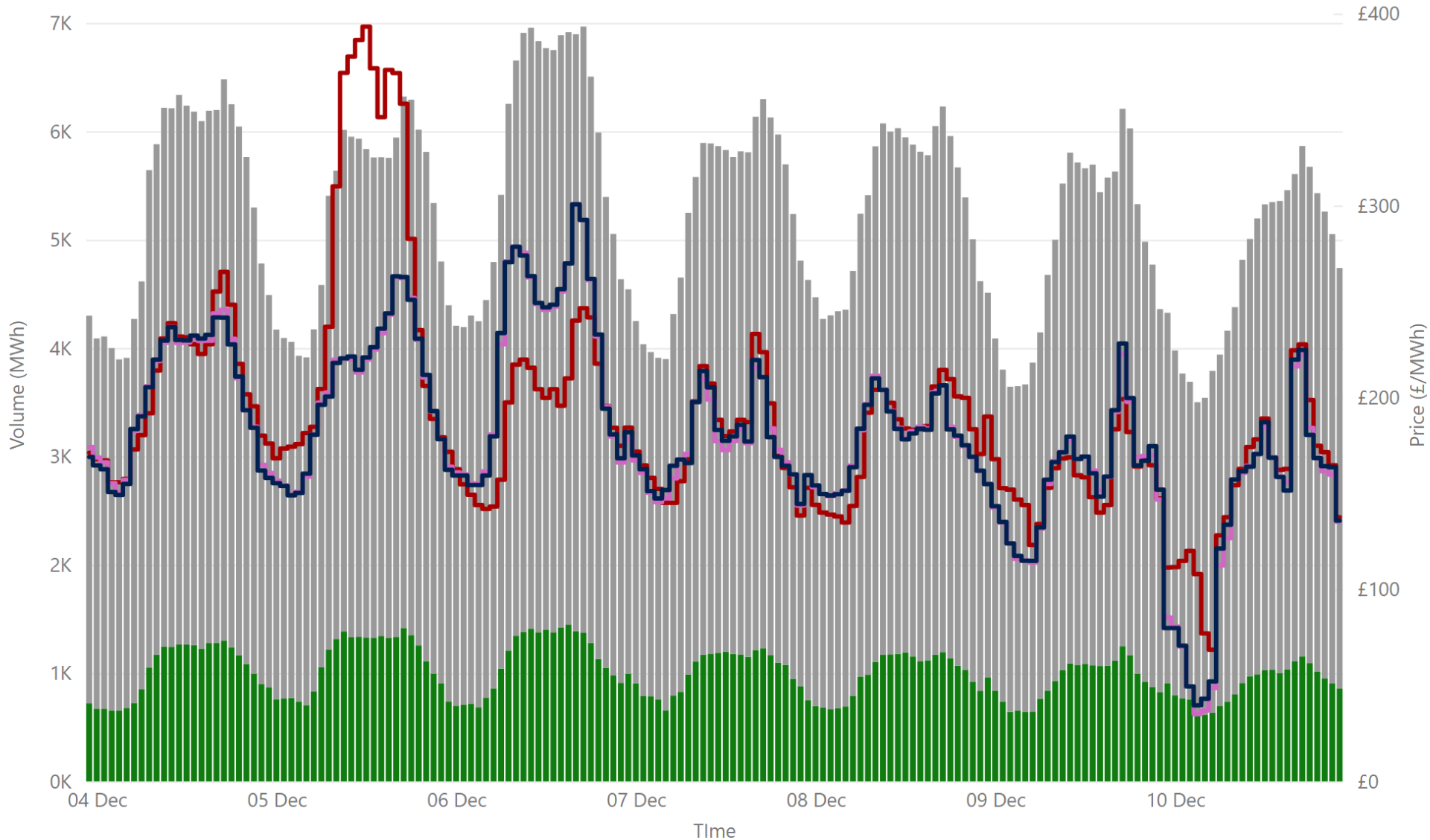
Source: SEMO PX

Summary Table

Date	Daily System Demand (MWh)*	Daily Dam Price (£/MWh)**	Daily Actual Wind (MWh)*	Daily Average Gas Price (p/th)***	Daily Average Coal Price (€/t)***	Daily Average Carbon Price (€/t)***
04 December 2023	129,328.00	105.03	56,199.25	96.50	118.90	70.46
05 December 2023	131,045.75	139.09	23,392.00	92.73	117.95	68.84
06 December 2023	130,664.50	98.20	91,635.00	94.25	120.75	68.82
07 December 2023	125,293.50	90.41	76,313.75	96.00	121.75	69.65
08 December 2023	123,294.00	90.17	87,540.75	94.10	122.90	68.58
09 December 2023	114,112.50	80.39	81,247.25	94.10	122.90	68.58
10 December 2023	111,512.25	78.50	66,645.50	94.10	122.90	68.58

Sources: \* EirGrid \*\* SEMO PX \*\*\* Oil Market Journal

# Weekly Day Ahead Market Summary - Week Commencing 04 December 2023



£94.91  
 Weekly Average SEM DAM Price\*

£90.89  
 Weekly Average GB EPEX Price\*\*

£91.07  
 Weekly Average GB Nordpool Price\*\*\*

£85,899,349.32  
 Weekly SEM DAM Market Value\*

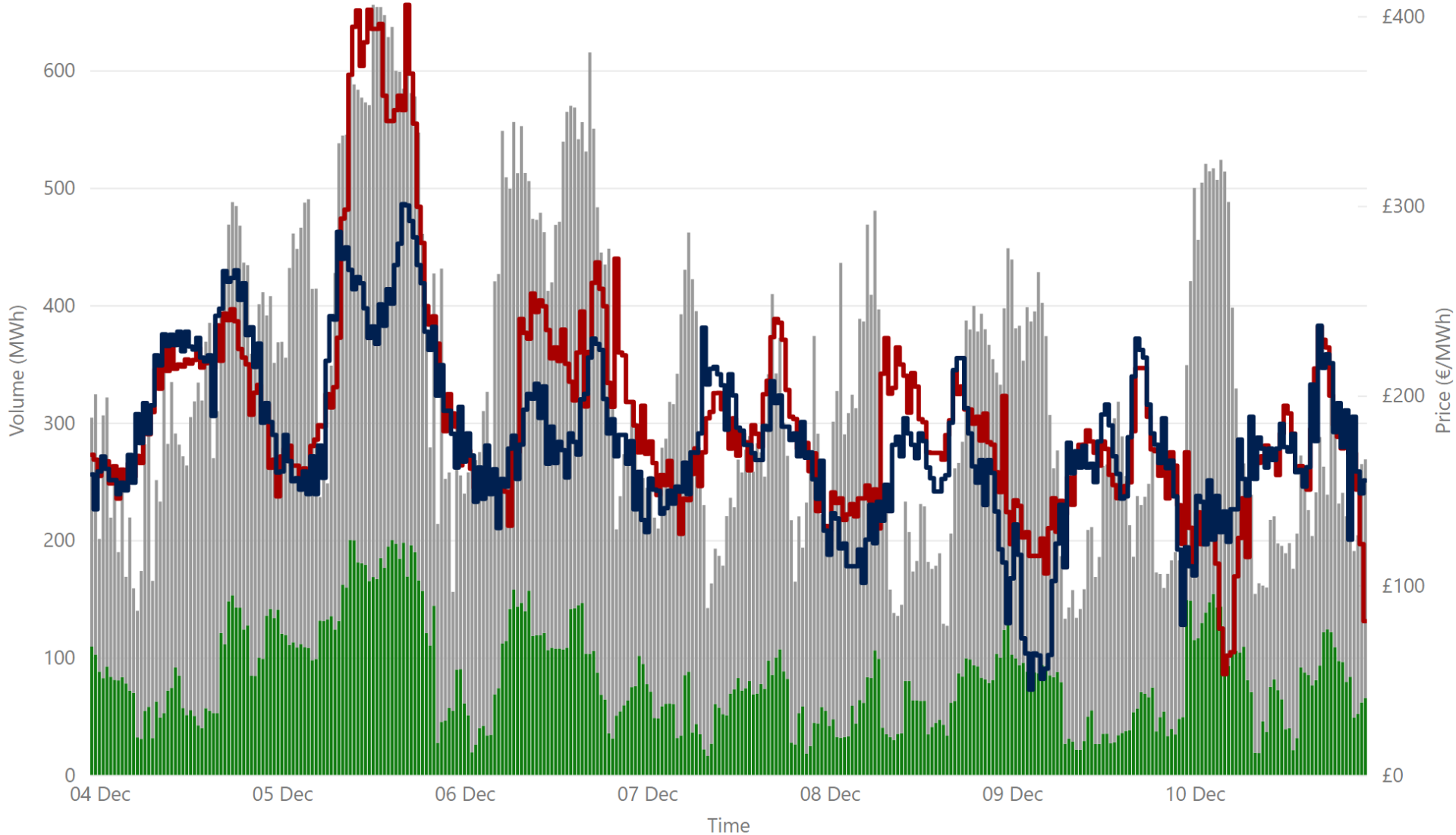
877,787.10  
 Weekly SEM DAM Volume MWh\*

**Legend** ● NI Volume\* ● ROI Volume\* ● SEM DAM Price\* ● GB EPEX DAM Price\*\* ● GB Nordpool DAM Price\*\*\*

Sources:  
 \* SEMO PX  
 \*\* EPEX  
 \*\*\* Nordpool

# Weekly Intraday Auction 1 Summary - Week Commencing 04 December 2023

Legend ● NI Volume\* ● ROI Volume\* ● SEM IDA1 Price\* ● GB IDA1 Price\*\*



£94.97  
Weekly Average SEM IDA1 Price\*

£88.55  
Weekly Average GB IDA1 Price\*\*

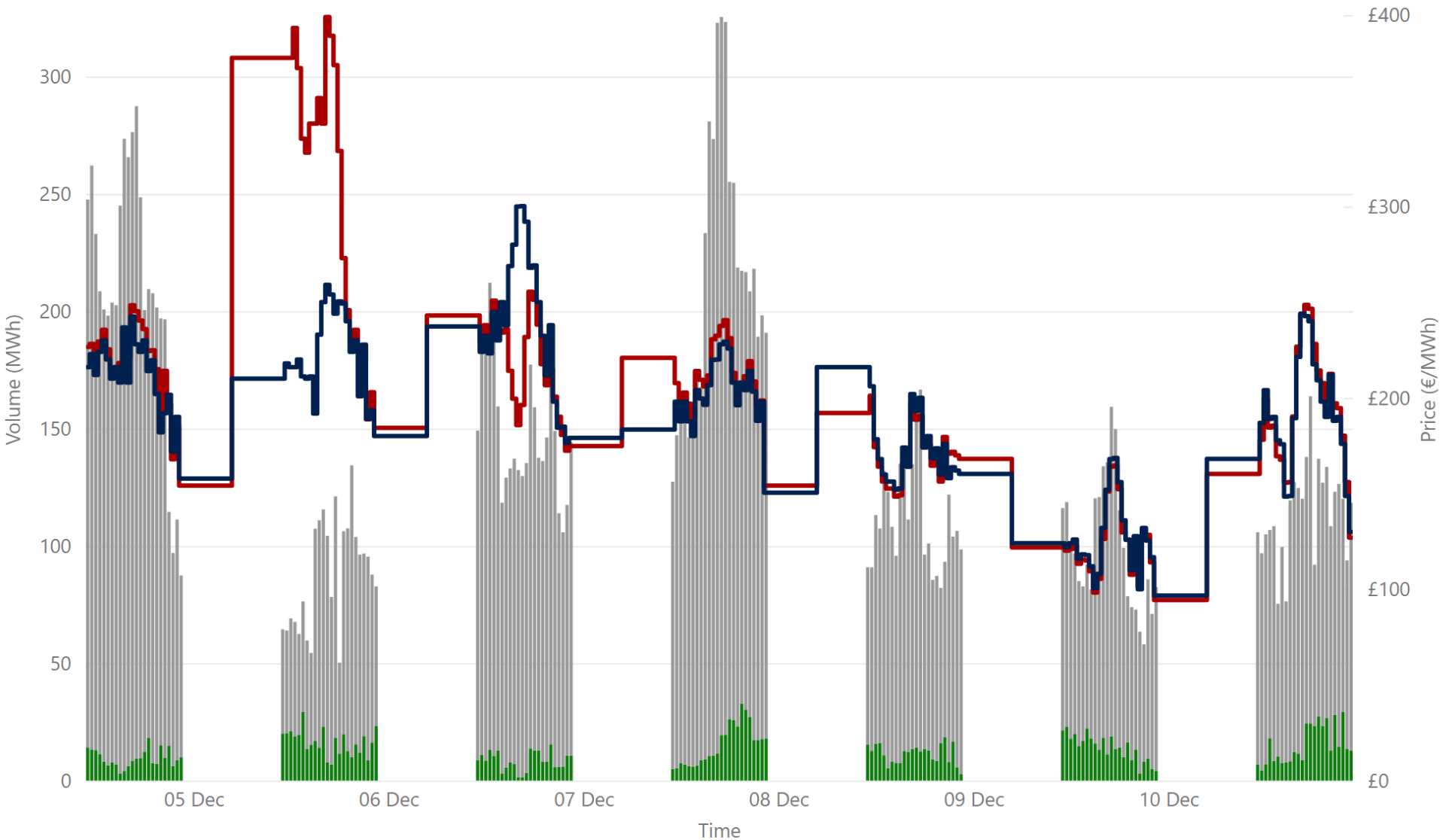
£11,142,391.91  
Weekly SEM IDA1 Market Value\*

111,238.50  
Weekly SEM DAM Volume MWh\*

Sources:  
\* SEMO PX  
\*\* EPEX

# Weekly Intraday Auction 2 Summary - Week Commencing 04 December 2023

Jurisdiction Volume ● NI Volume\* ● ROI Volume\* ● SEM IDA2 Price\* ● GB Price\*\*

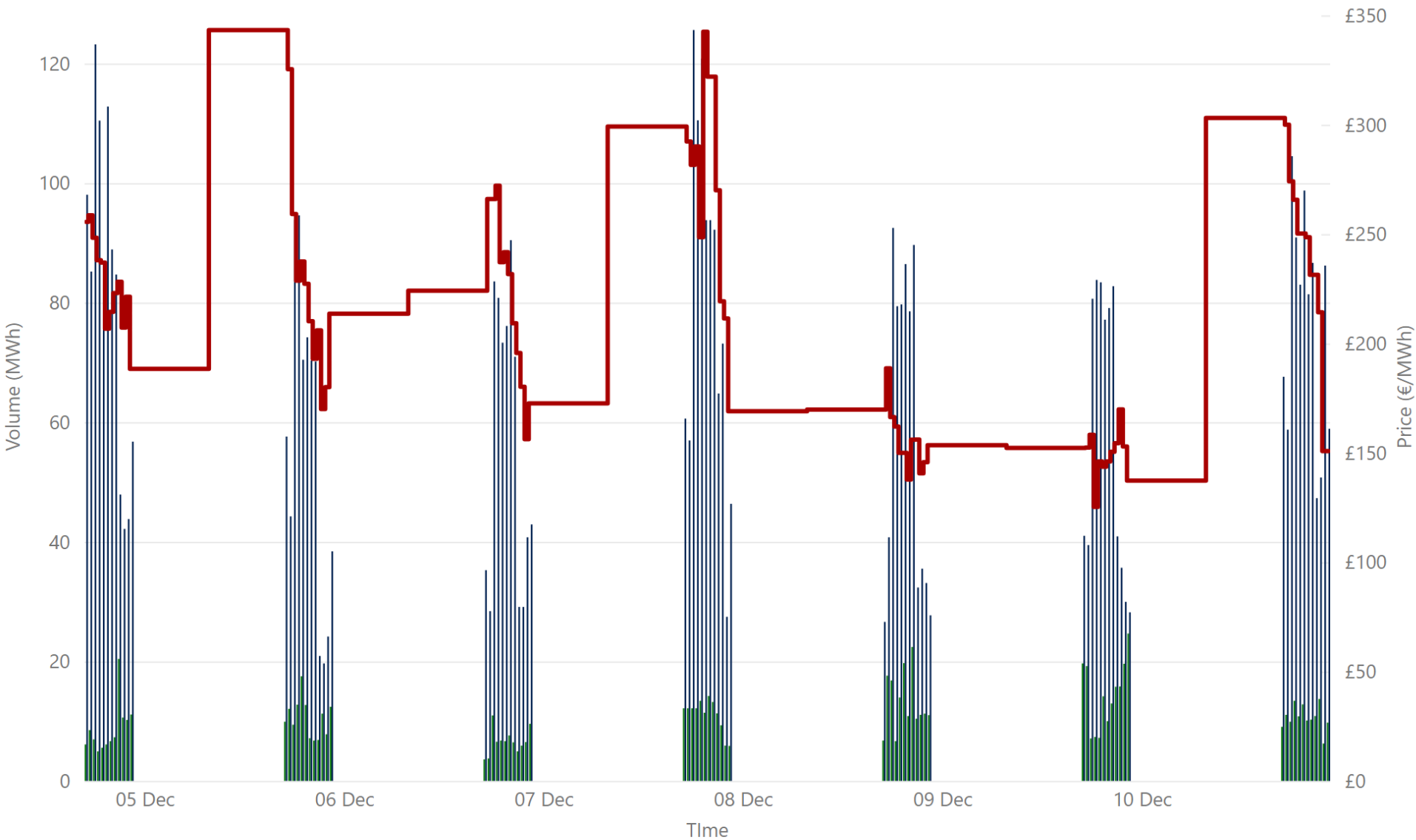


**£102.97**  
 Weekly Average SEM IDA2 Price\*  
**£97.29**  
 Weekly Average GB IDA2 Price\*\*  
**£2,465,729.62**  
 Weekly SEM IDA2 Market Value\*  
**23,636.90**  
 Weekly SEM IDA2 Volume MWh\*

Sources:  
 \* SEMO PX  
 \*\* EPEX

# Weekly Intraday Auction 3 Summary - Week Commencing 04 December 2023

Jurisdiction ● NI Volume\* ● ROI Volume\* ● SEM Price\*



£107.01  
Weekly Average SEM IDA3 Price\*  
£719,132.90  
Weekly SEM IDA3 Market Value\*  
6,524.55  
Weekly SEM IDA3 Volume MWh\*

# Weekly Intraday Continuous Summary - Week Commencing 04 December 2023

● IDC Volume\* ● Weighted Average IDC Price\*



£116.56  
Weekly SEM IDC Average Price\*

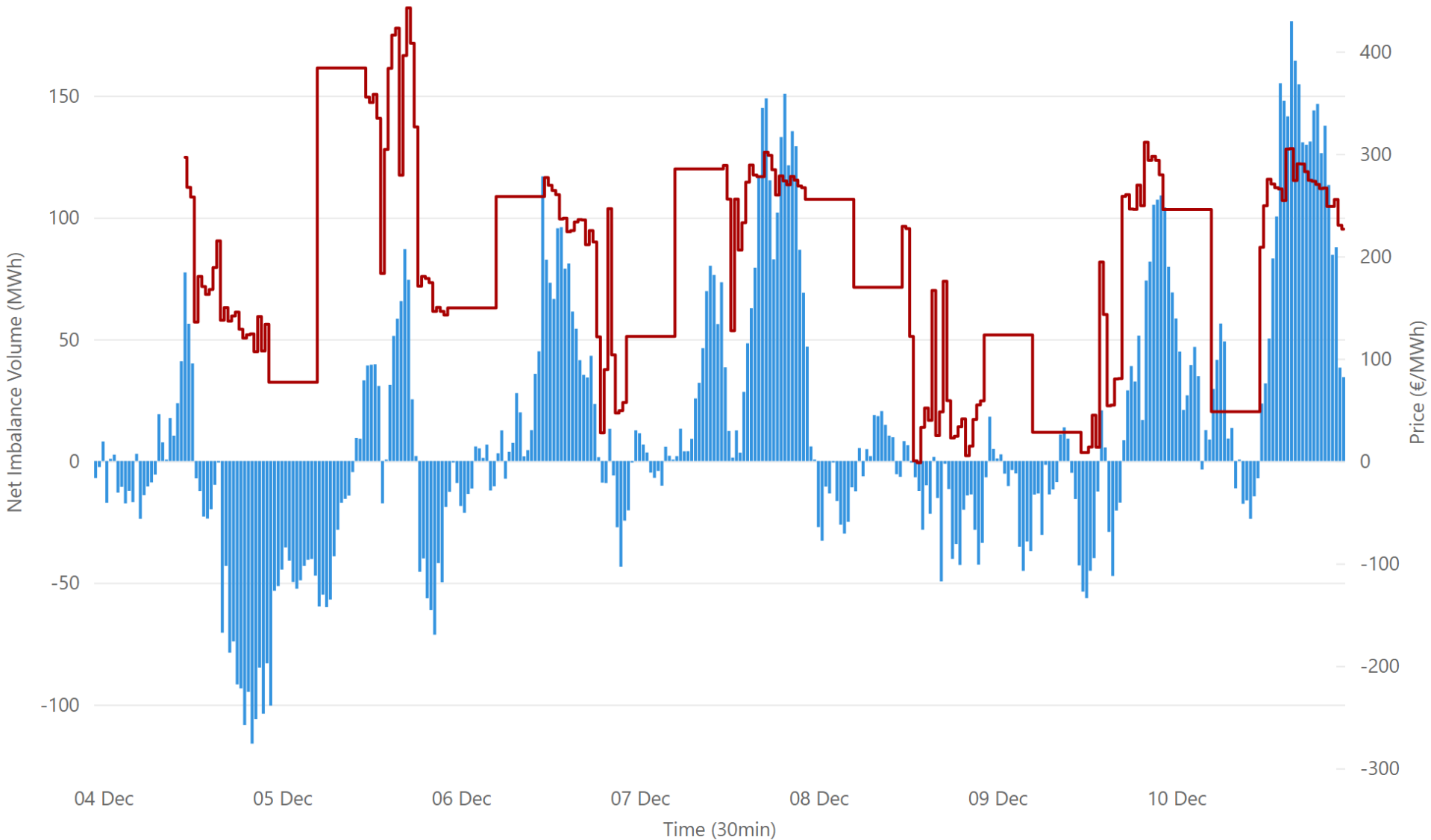
£116.56  
Weekly SEM IDC Max Price\*

£116.56  
Weekly SEM IDC Min Price\*

4.60  
Weekly SEM IDC Volume MWh\*

# Weekly Balancing Market 30 Minute Summary - Week Commencing 04 December 2023

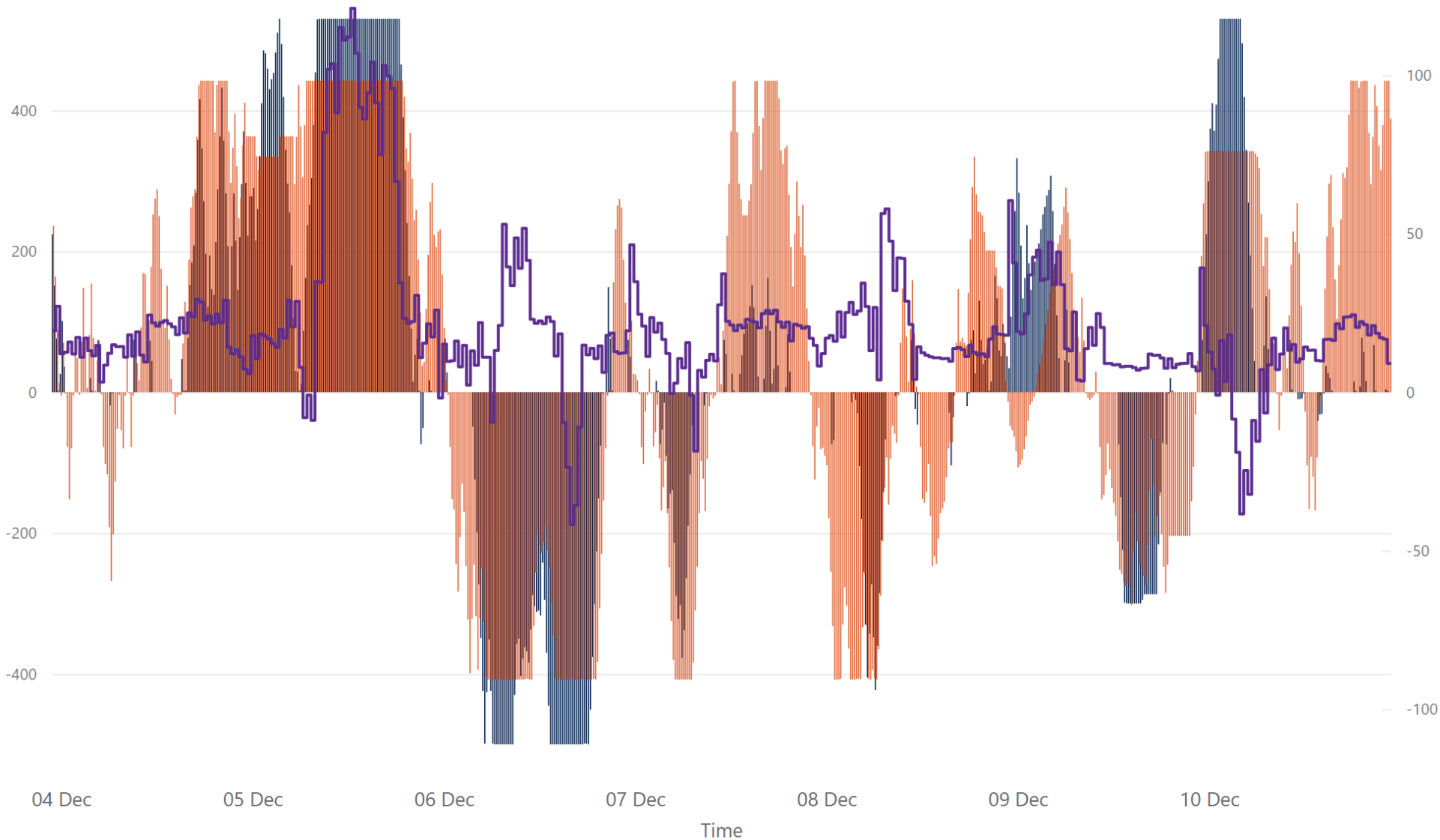
● Net Imbalance Volume\* ● 30 Minute Imbalance Settlement Price\*



99.12  
Ave 30min Imbalance Price\*  
€ 257.87  
Max 30min Imbalance Price\*  
-€ 7.91  
Min 30min Imbalance Price\*  
90.31  
Max Net Imbalance Volume\*  
-59.99  
Min Net Imbalance Volume\*

# Weekly Interconnection Summary - Week Commencing 04 December 2023

● EWIC Volume (MW)\* ● MOYLE Volume (MW)\* ● SEM-GB Spread\*\*



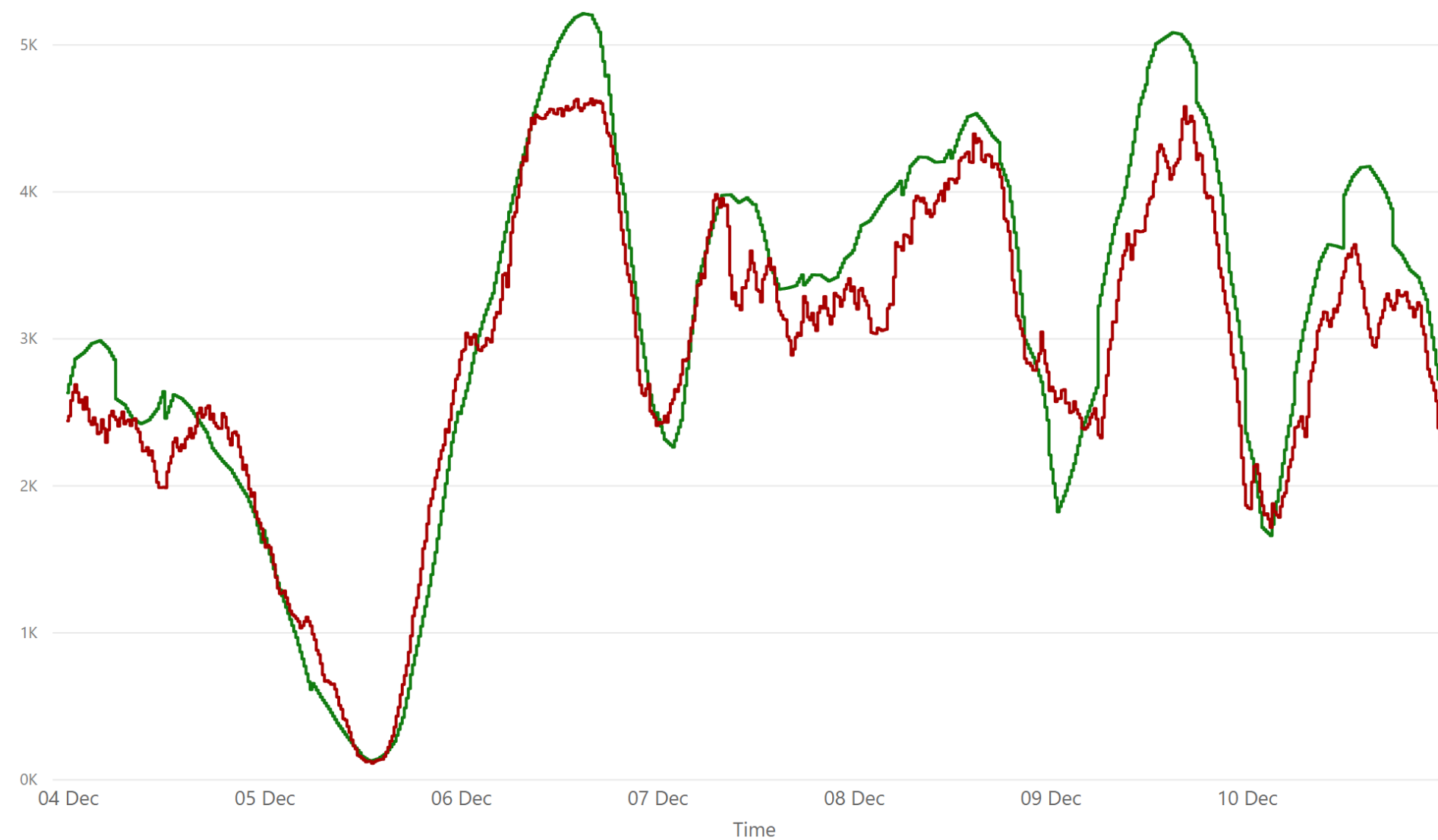
101,629.00  
Weekly MOYLE (MW) Import\*  
-60,886.00  
Weekly MOYLE (MW) Export\*  
40,743.00  
Weekly MOYLE (MW) NET\*  
63,437.00  
Weekly EWIC (MW) Import\*  
-40,036.00  
Weekly EWIC (MW) Export\*  
23,401.00  
Weekly EWIC (MW) NET\*

Sources:  
\* EirGrid  
\*\* SEMO, EPEX & Nordpool



# Weekly Wind Capacity Summary - Week Commencing 04 December 2023

● 15 Minute Forecast Wind (MW)\* ● 15 Minute Actual Wind (MW)\*



4629  
Max Actual Wind (MW)\*

107  
Min Actual Wind (MW)\*

5209  
Max Forecast Wind (MW)\*

121  
Min Forecast Wind (MW)\*