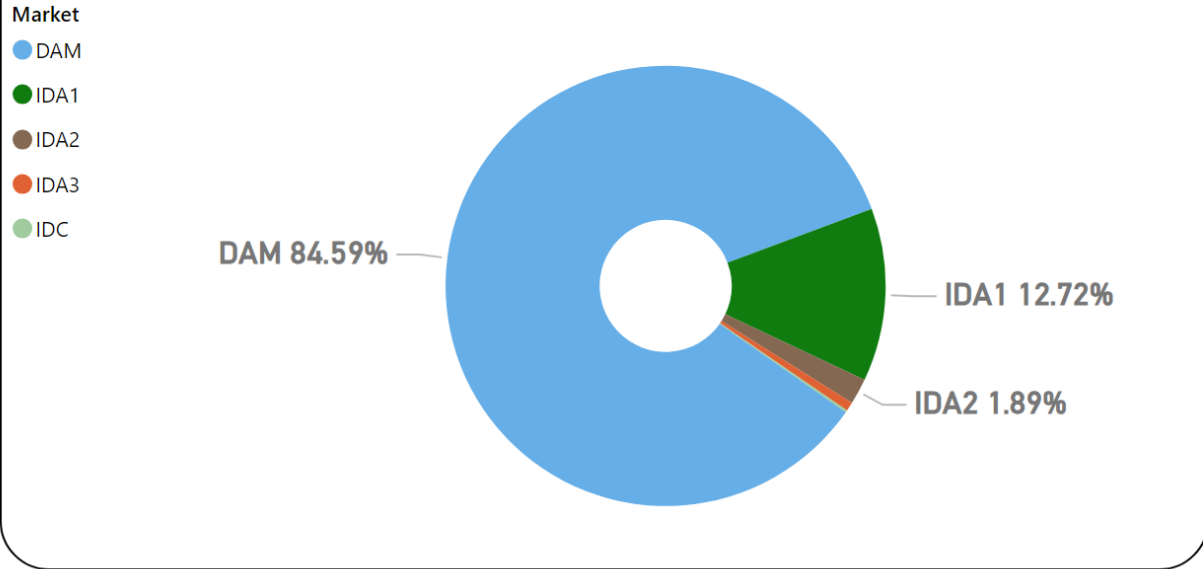


MMU Weekly Market Summary Report

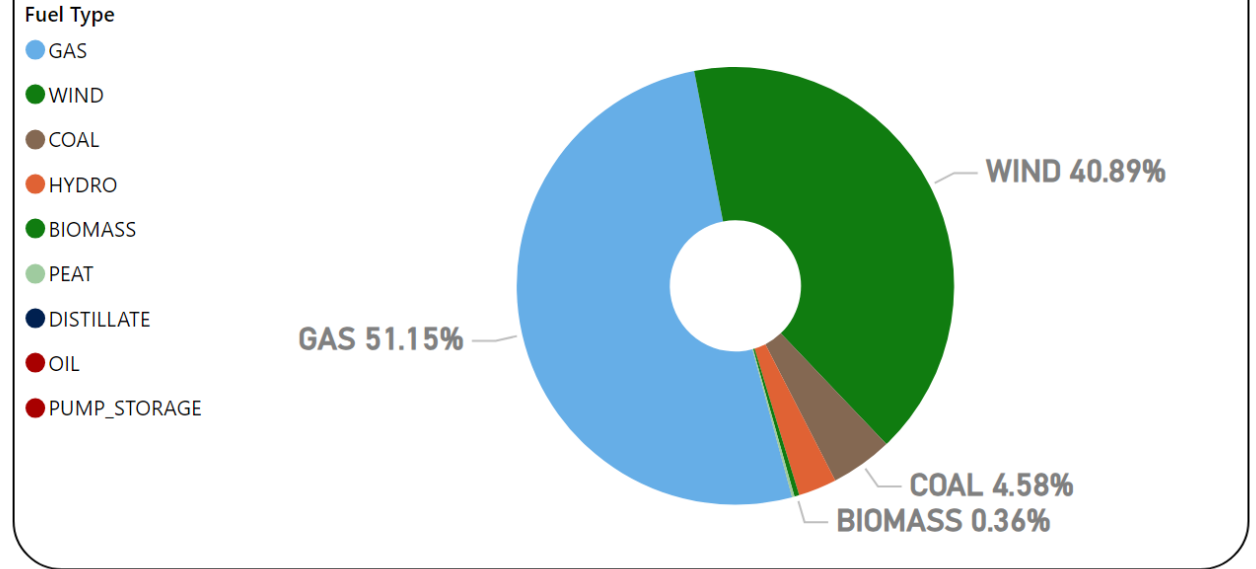
- Week Commencing 11 December 2023

Weekly Volume by Market



Source: SEMO PX

Weekly Fuel Mix



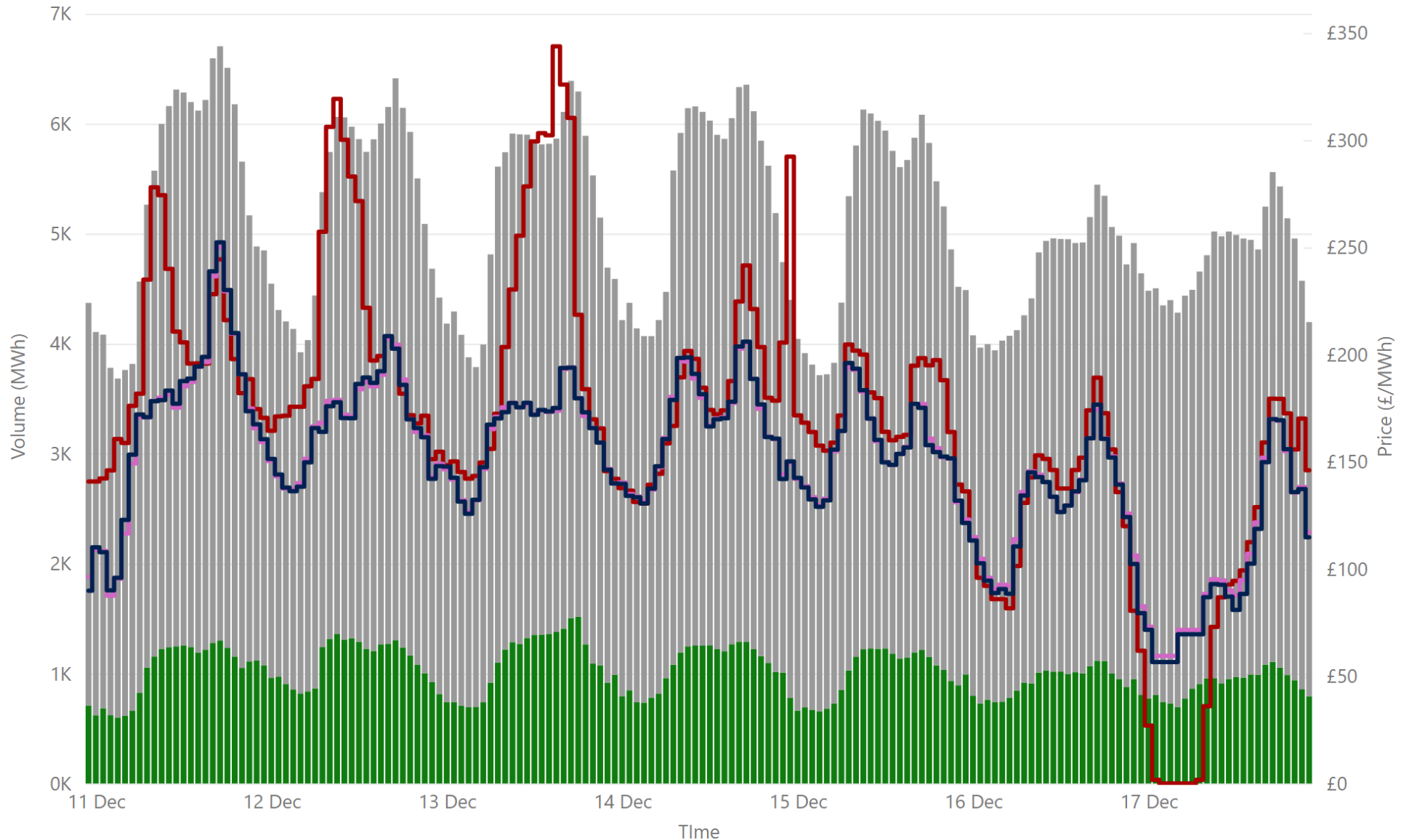
Source: SEMO PX

Summary Table

| Date | Daily System Demand (MWh)* | Daily Dam Price (£/MWh)** | Daily Actual Wind (MWh)* | Daily Average Gas Price (p/th)*** | Daily Average Coal Price (€/t)*** | Daily Average Carbon Price (€/t)*** |
|------------------|----------------------------|---------------------------|--------------------------|-----------------------------------|-----------------------------------|-------------------------------------|
| 11 December 2023 | 123,628.25 | 100.83 | 37,261.75 | 87.50 | 121.95 | 67.31 |
| 12 December 2023 | 125,856.25 | 106.54 | 25,755.00 | 84.55 | 117.80 | 68.03 |
| 13 December 2023 | 123,415.00 | 110.52 | 37,333.50 | 83.68 | 117.75 | 68.84 |
| 14 December 2023 | 124,956.50 | 90.02 | 42,697.50 | 82.50 | 117.75 | 66.86 |
| 15 December 2023 | 121,930.75 | 90.84 | 52,146.25 | 73.50 | 117.00 | 67.26 |
| 16 December 2023 | 111,311.00 | 66.23 | 73,526.25 | 73.50 | 117.00 | 67.26 |
| 17 December 2023 | 108,434.75 | 42.93 | 81,817.00 | 73.50 | 117.00 | 67.26 |

Sources: * EirGrid ** SEMO PX *** Oil Market Journal

Weekly Day Ahead Market Summary - Week Commencing 11 December 2023



£84.76
 Weekly Average SEM DAM Price*

NaN
 Weekly Average GB EPEX Price**

NaN
 Weekly Average GB Nordpool Price***

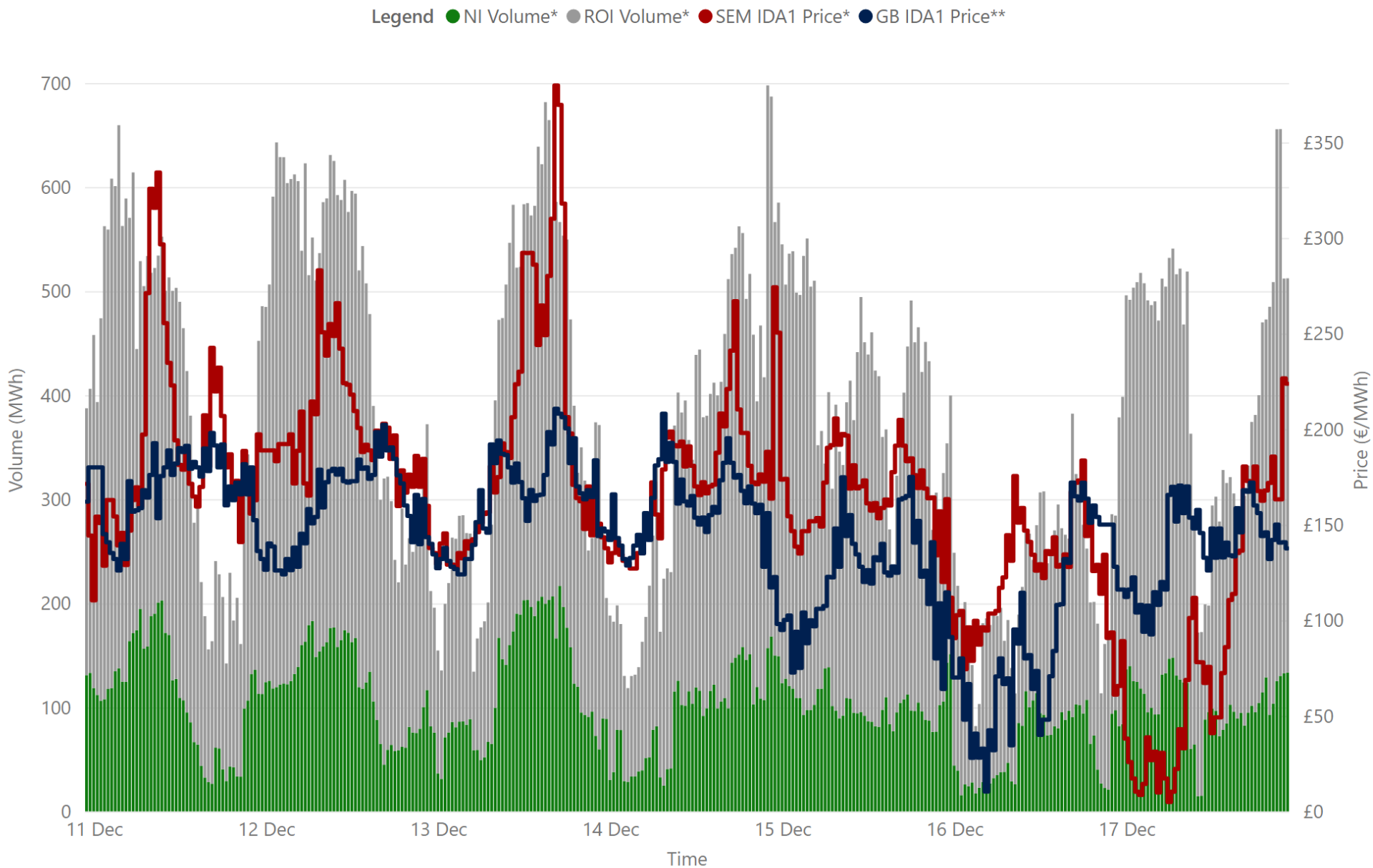
£75,266,453.75
 Weekly SEM DAM Market Value*

857,213.40
 Weekly SEM DAM Volume MWh*

Legend ● NI Volume* ● ROI Volume* ● SEM DAM Price* ● GB EPEX DAM Price** ● GB Nordpool DAM Price***

Sources:
 * SEMO PX
 ** EPEX
 *** Nordpool

Weekly Intraday Auction 1 Summary - Week Commencing 11 December 2023



£81.45
Weekly Average SEM IDA1 Price*

£71.90
Weekly Average GB IDA1 Price**

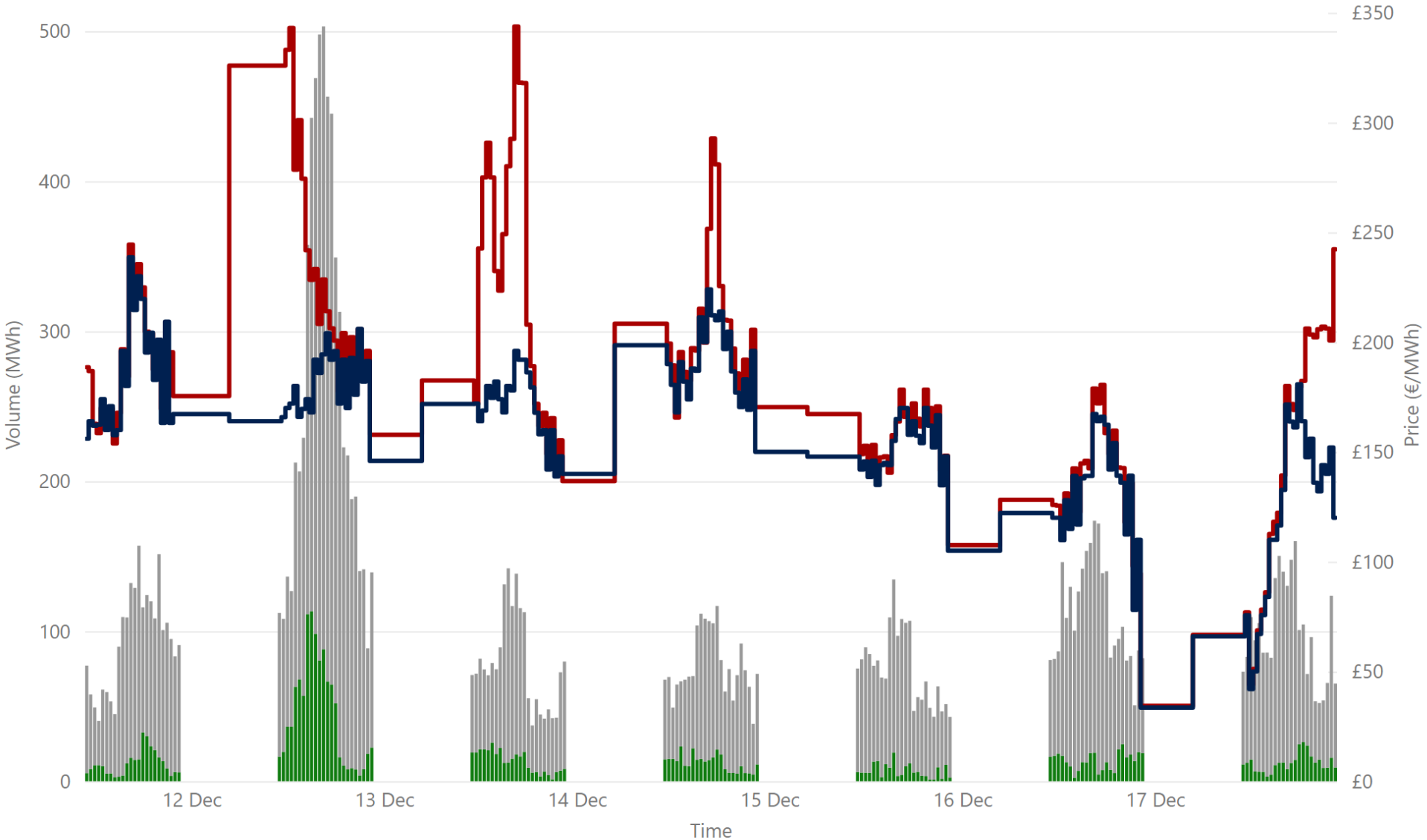
£11,050,357.39
Weekly SEM IDA1 Market Value*

128,929.95
Weekly SEM DAM Volume MWh*

Sources:
* SEMO PX
** EPEX

Weekly Intraday Auction 2 Summary - Week Commencing 11 December 2023

Jurisdiction Volume ● NI Volume* ● ROI Volume* ● SEM IDA2 Price* ● GB Price**



£91.98
Weekly Average SEM IDA2 Price*

£80.26
Weekly Average GB IDA2 Price**

£1,855,902.30
Weekly SEM IDA2 Market Value*

19,170.30
Weekly SEM IDA2 Volume MWh*

Sources:
* SEMO PX
** EPEX

Weekly Intraday Auction 3 Summary - Week Commencing 11 December 2023

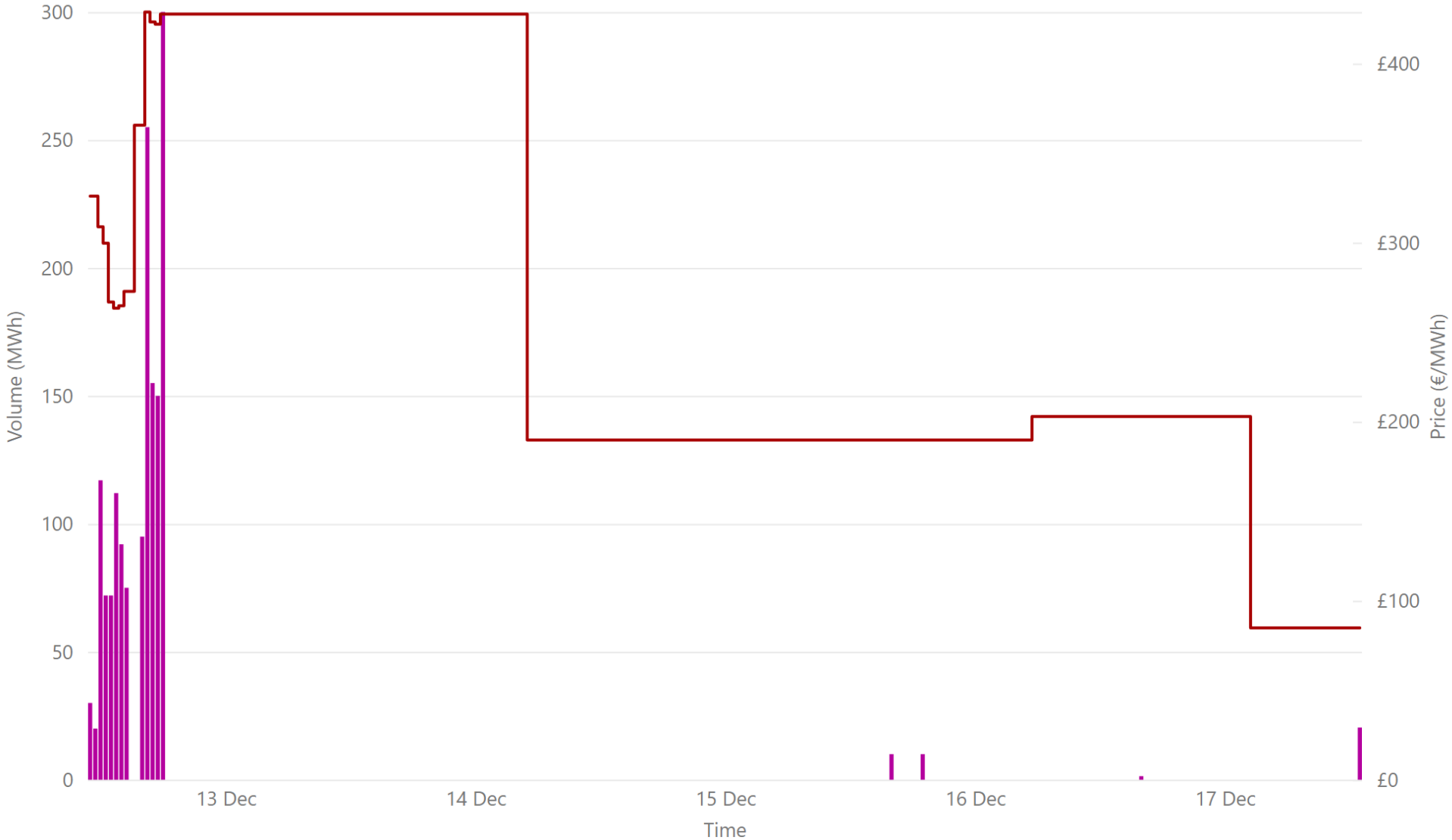
Jurisdiction ● NI Volume* ● ROI Volume* ● SEM Price*



£97.91
Weekly Average SEM IDA3 Price*
£630,728.65
Weekly SEM IDA3 Market Value*
6,523.75
Weekly SEM IDA3 Volume MWh*

Weekly Intraday Continuous Summary - Week Commencing 12 December 2023

● IDC Volume* ● Weighted Average IDC Price*



£148.90
Weekly SEM IDC Average Price*

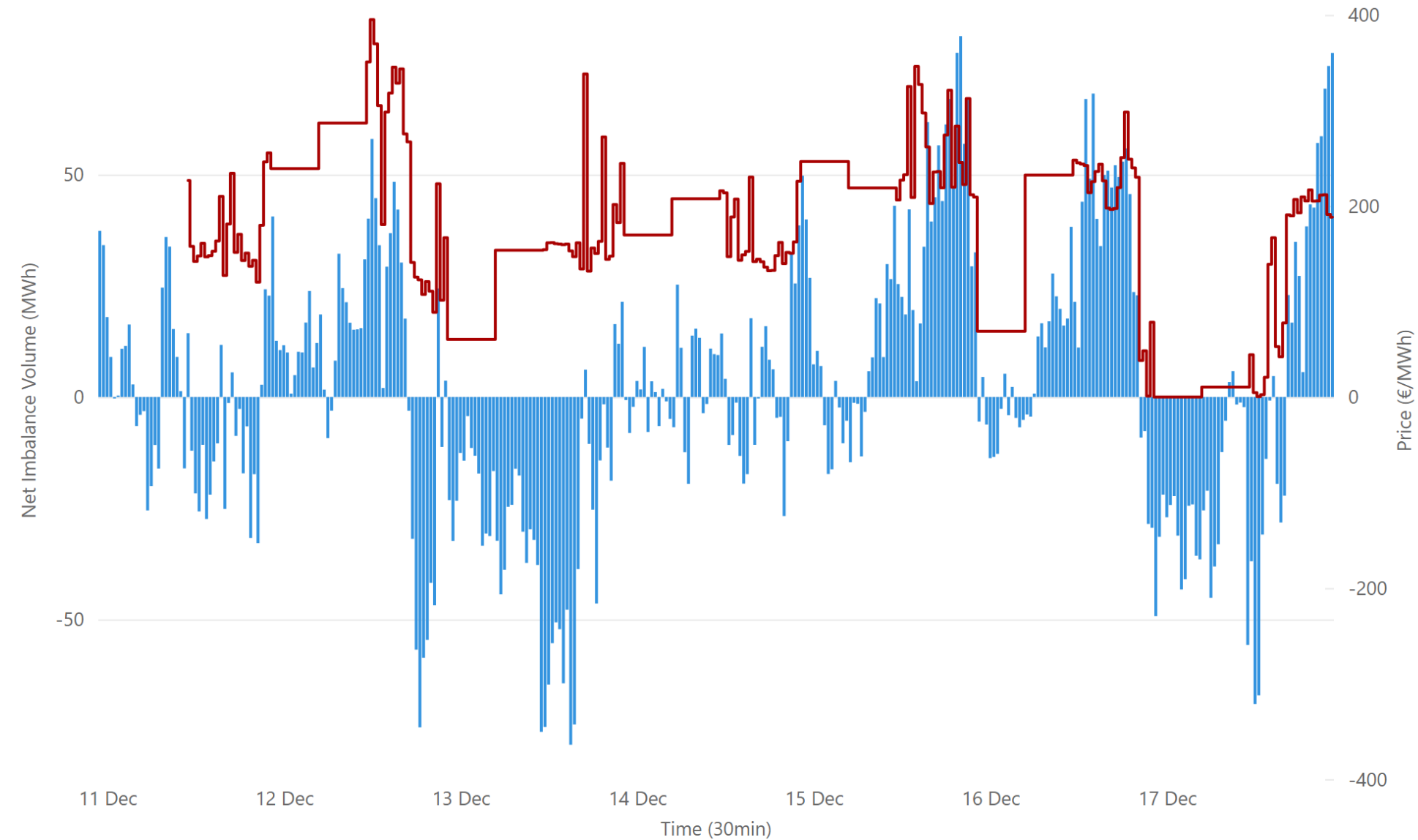
£156.52
Weekly SEM IDC Max Price*

£141.81
Weekly SEM IDC Min Price*

1,586.80
Weekly SEM IDC Volume MWh*

Weekly Balancing Market 30 Minute Summary - Week Commencing 11 December 2023

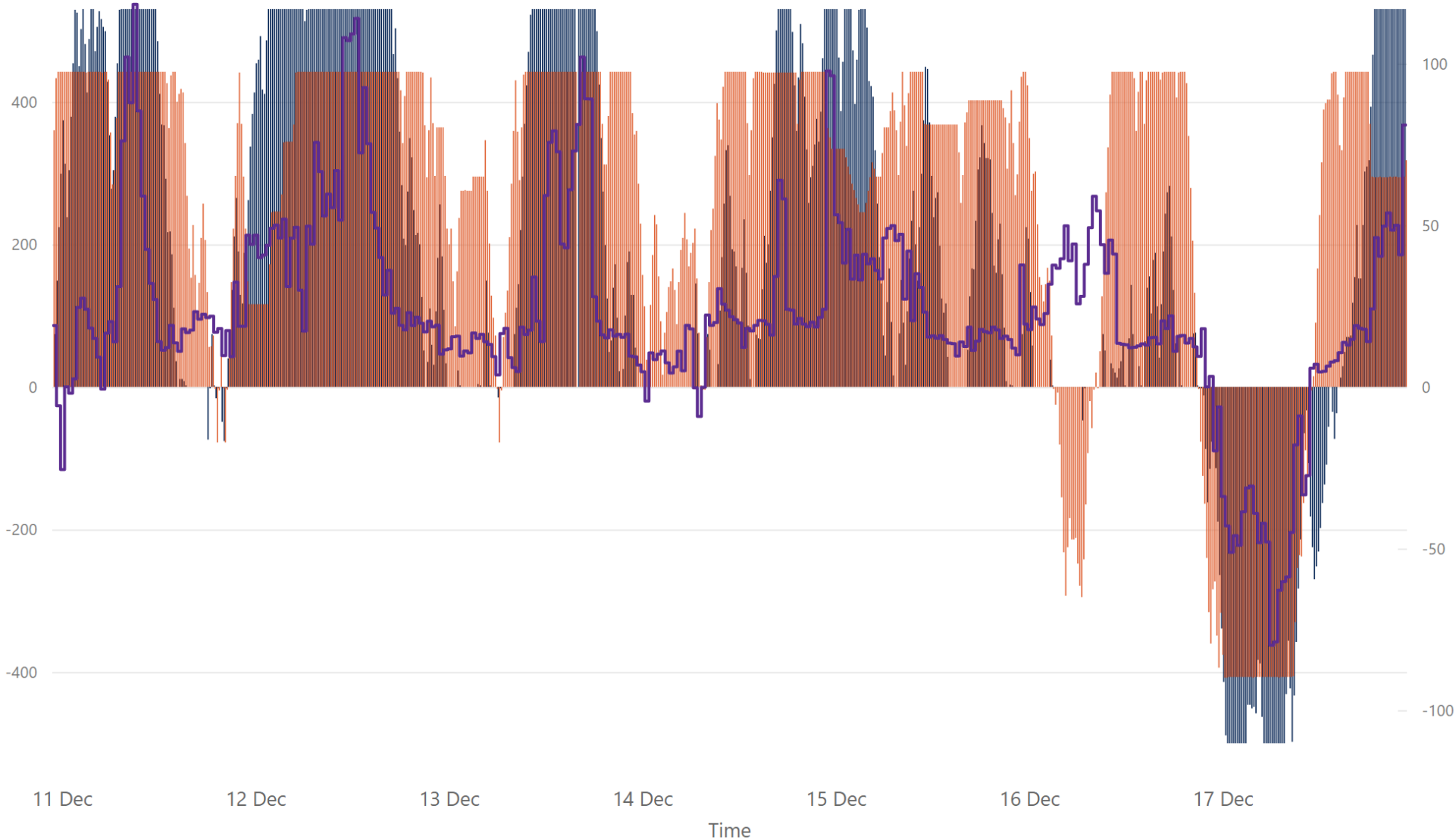
● Net Imbalance Volume* ● 30 Minute Imbalance Settlement Price*



93.72
Ave 30min Imbalance Price*
€ 243.35
Max 30min Imbalance Price*
-€ 8.97
Min 30min Imbalance Price*
40.56
Max Net Imbalance Volume*
-45.13
Min Net Imbalance Volume*

Weekly Interconnection Summary - Week Commencing 11 December 2023

● EWIC Volume (MW)* ● MOYLE Volume (MW)* ● SEM-GB Spread**



205,717.00
Weekly MOYLE (MW) Import*
-22,564.00
Weekly MOYLE (MW) Export*
183,153.00
Weekly MOYLE (MW) NET*
147,487.00
Weekly EWIC (MW) Import*
-21,883.00
Weekly EWIC (MW) Export*
125,604.00
Weekly EWIC (MW) NET*

Sources:
* EirGrid
** SEMO, EPEX & Nordpool

Weekly Wind Capacity Summary - Week Commencing 11 December 2023

● 15 Minute Forecast Wind (MW)* ● 15 Minute Actual Wind (MW)*



3890
Max Actual Wind (MW)*
0
Min Actual Wind (MW)*
5000
Max Forecast Wind (MW)*
85
Min Forecast Wind (MW)*