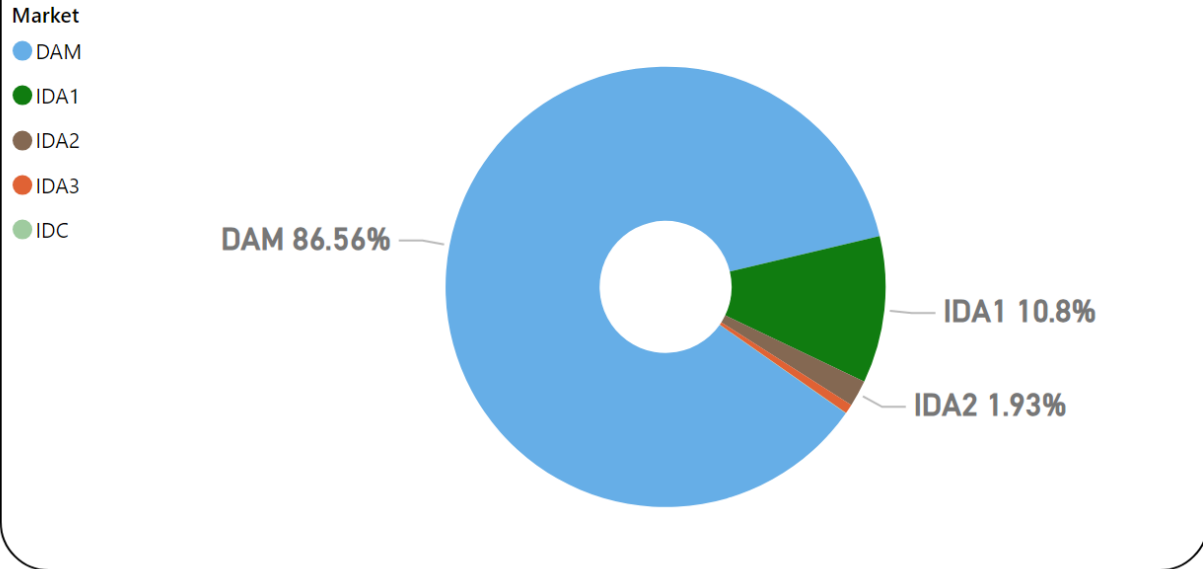


MMU Weekly Market Summary Report

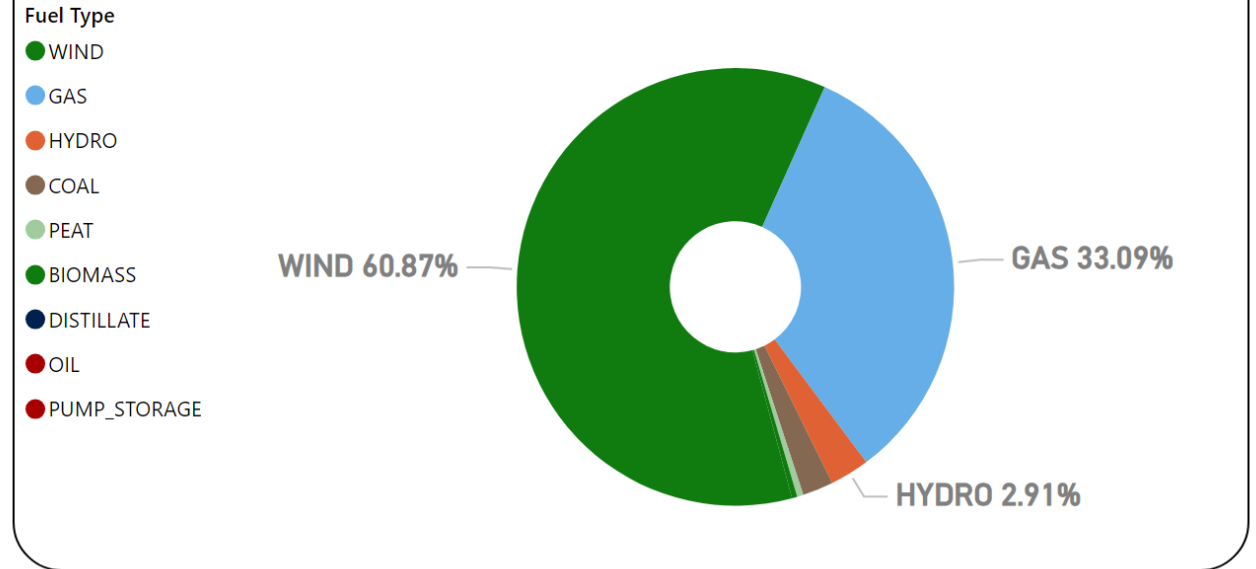
- Week Commencing 18 December 2023

Weekly Volume by Market



Source: SEMO PX

Weekly Fuel Mix



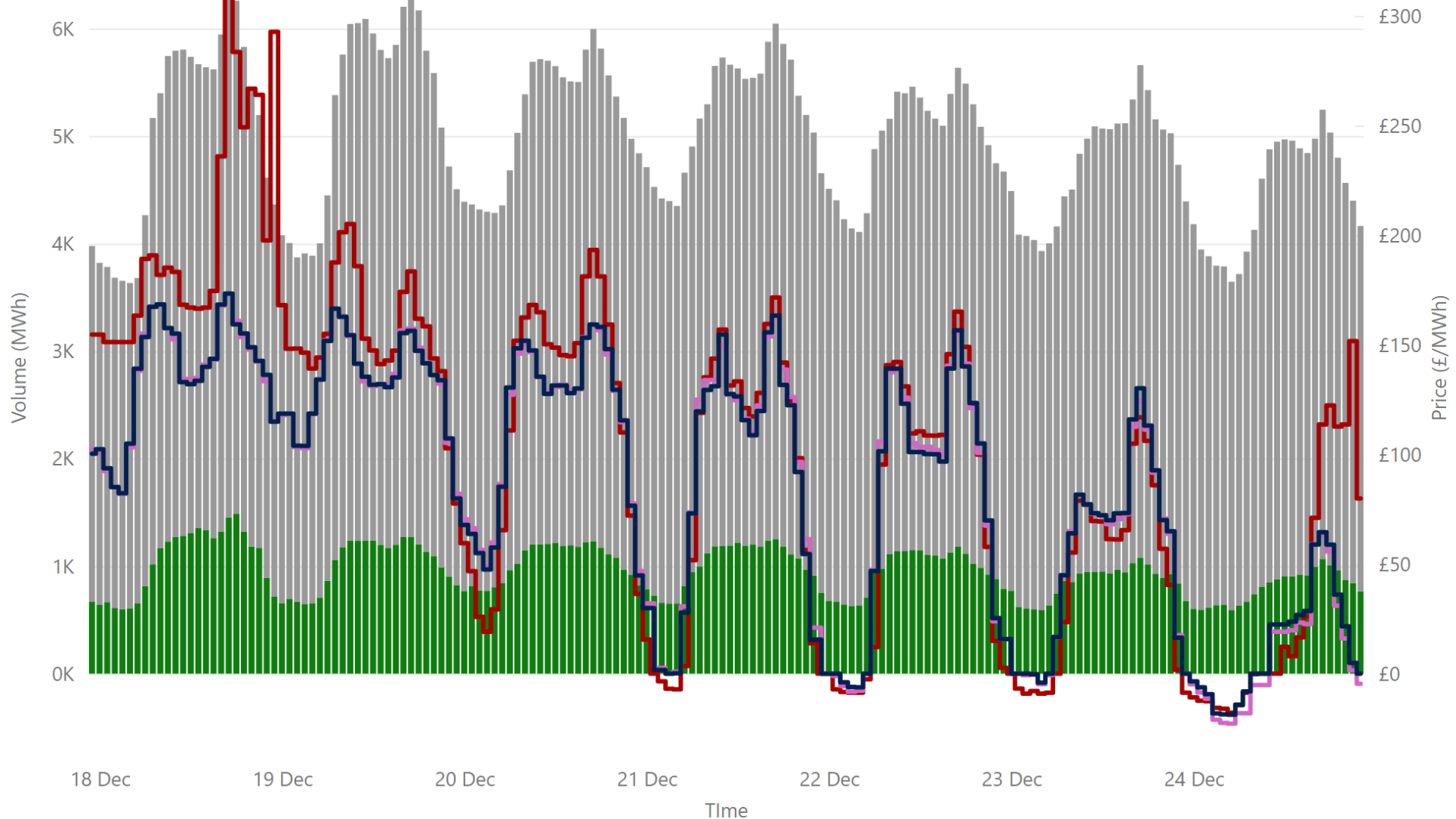
Source: SEMO PX

Summary Table

Date	Daily System Demand (MWh)*	Daily Dam Price (£/MWh)**	Daily Actual Wind (MWh)*	Daily Average Gas Price (p/th)***	Daily Average Coal Price (€/t)***	Daily Average Carbon Price (€/t)***
18 December 2023	118,920.50	99.71	36,128.00	76.50	117.20	68.93
19 December 2023	121,404.00	81.91	58,262.75	71.50	115.90	69.02
20 December 2023	121,351.25	62.26	89,796.25	72.00	115.95	72.38
21 December 2023	118,142.00	45.44	88,601.00	73.80	115.75	75.36
22 December 2023	112,670.75	39.92	81,890.25	75.25	116.00	75.95
23 December 2023	106,272.00	23.53	80,960.75	75.25	116.00	75.95
24 December 2023	102,689.75	16.31	68,166.00	75.25	116.00	75.95

Sources: * EirGrid ** SEMO PX *** Oil Market Journal

Weekly Day Ahead Market Summary - Week Commencing 18 December 2023



£50.59
 Weekly Average SEM DAM Price*

NaN
 Weekly Average GB EPEX Price**

NaN
 Weekly Average GB Nordpool Price***

£44,866,549.64
 Weekly SEM DAM Market Value*

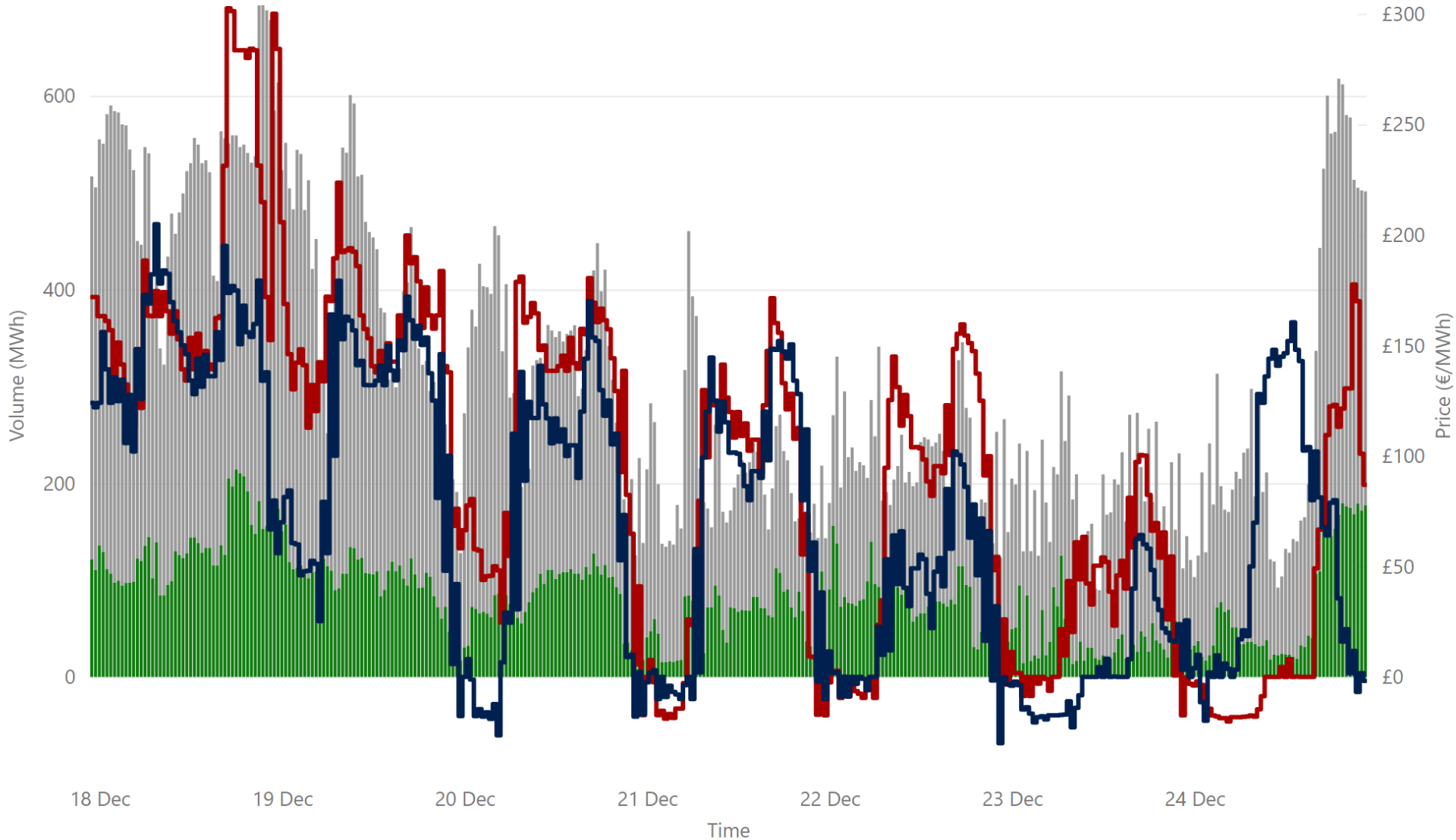
834,912.30
 Weekly SEM DAM Volume MWh*

Legend ● NI Volume* ● ROI Volume* ● SEM DAM Price* ● GB EPEX DAM Price** ● GB Nordpool DAM Price***

Sources:
 * SEMO PX
 ** EPEX
 *** Nordpool

Weekly Intraday Auction 1 Summary - Week Commencing 18 December 2023

Legend ● NI Volume* ● ROI Volume* ● SEM IDA1 Price* ● GB IDA1 Price**



£47.26
Weekly Average SEM IDA1 Price*

£35.50
Weekly Average GB IDA1 Price**

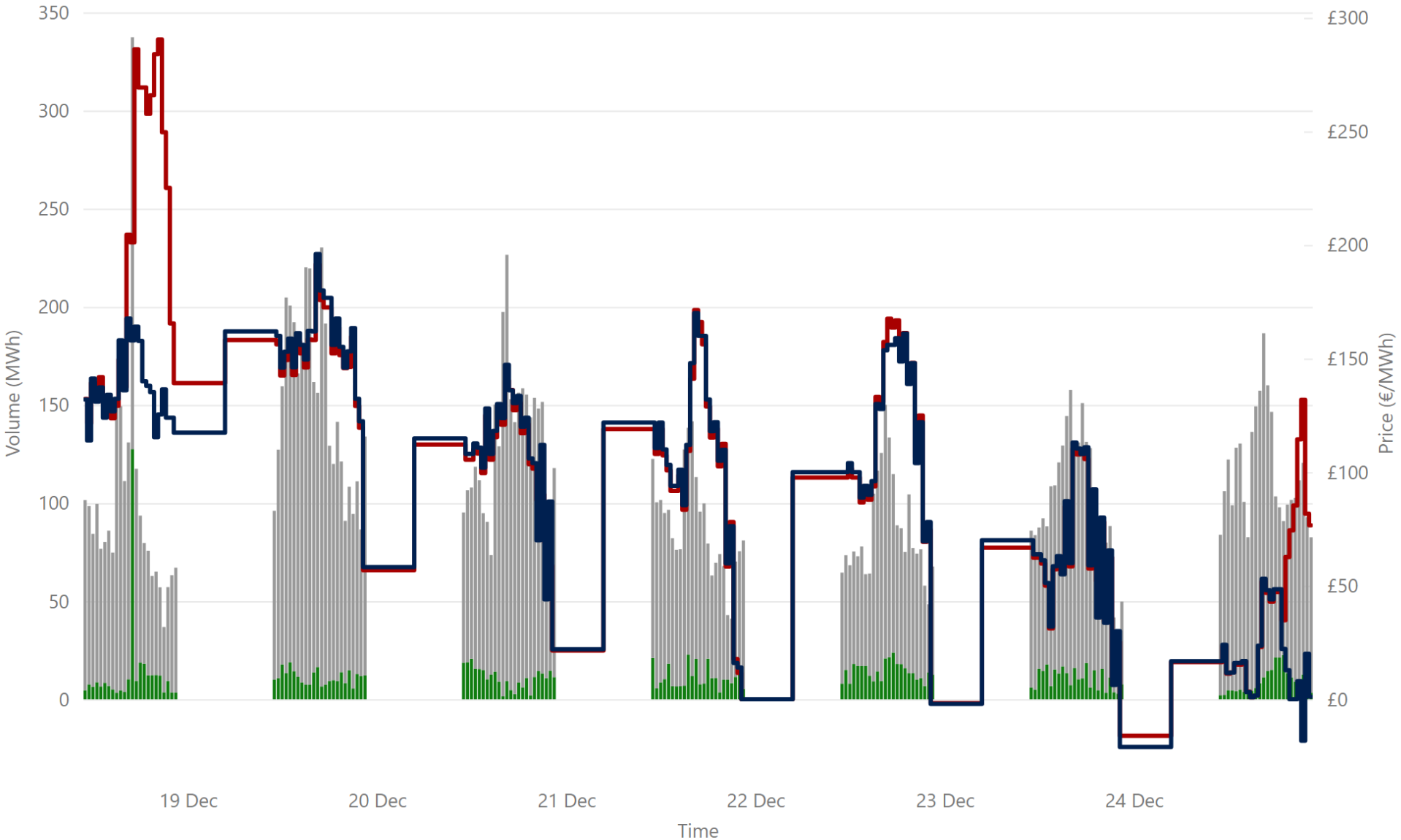
£6,175,711.62
Weekly SEM IDA1 Market Value*

104,176.25
Weekly SEM DAM Volume MWh*

Sources:
* SEMO PX
** EPEX

Weekly Intraday Auction 2 Summary - Week Commencing 18 December 2023

Jurisdiction Volume ● NI Volume* ● ROI Volume* ● SEM IDA2 Price* ● GB Price**

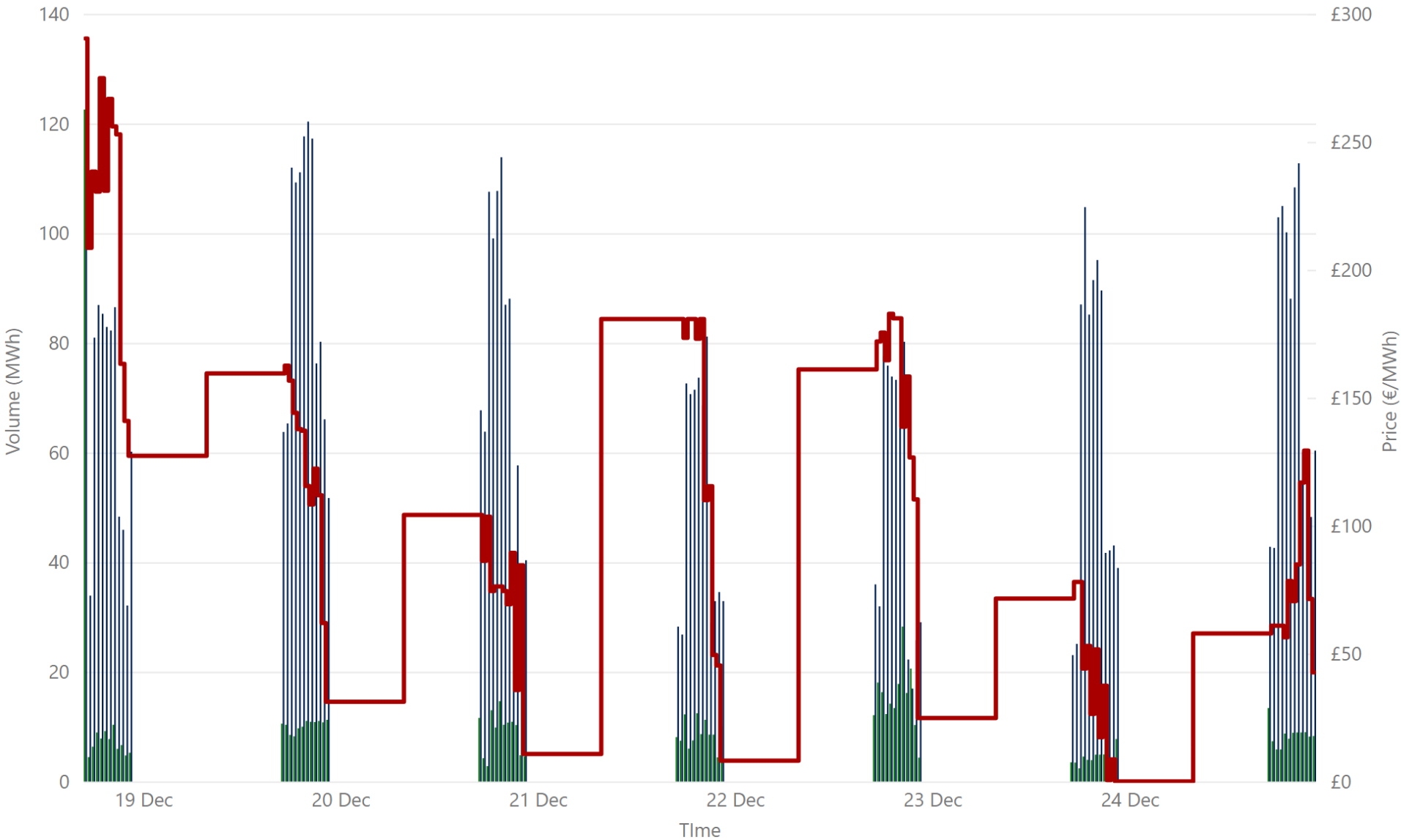


£54.73
 Weekly Average SEM IDA2 Price*
£49.58
 Weekly Average GB IDA2 Price**
£1,047,046.95
 Weekly SEM IDA2 Market Value*
18,572.55
 Weekly SEM IDA2 Volume MWh*

Sources:
 * SEMO PX
 ** EPEX

Weekly Intraday Auction 3 Summary - Week Commencing 18 December 2023

Jurisdiction ● NI Volume* ● ROI Volume* ● SEM Price*



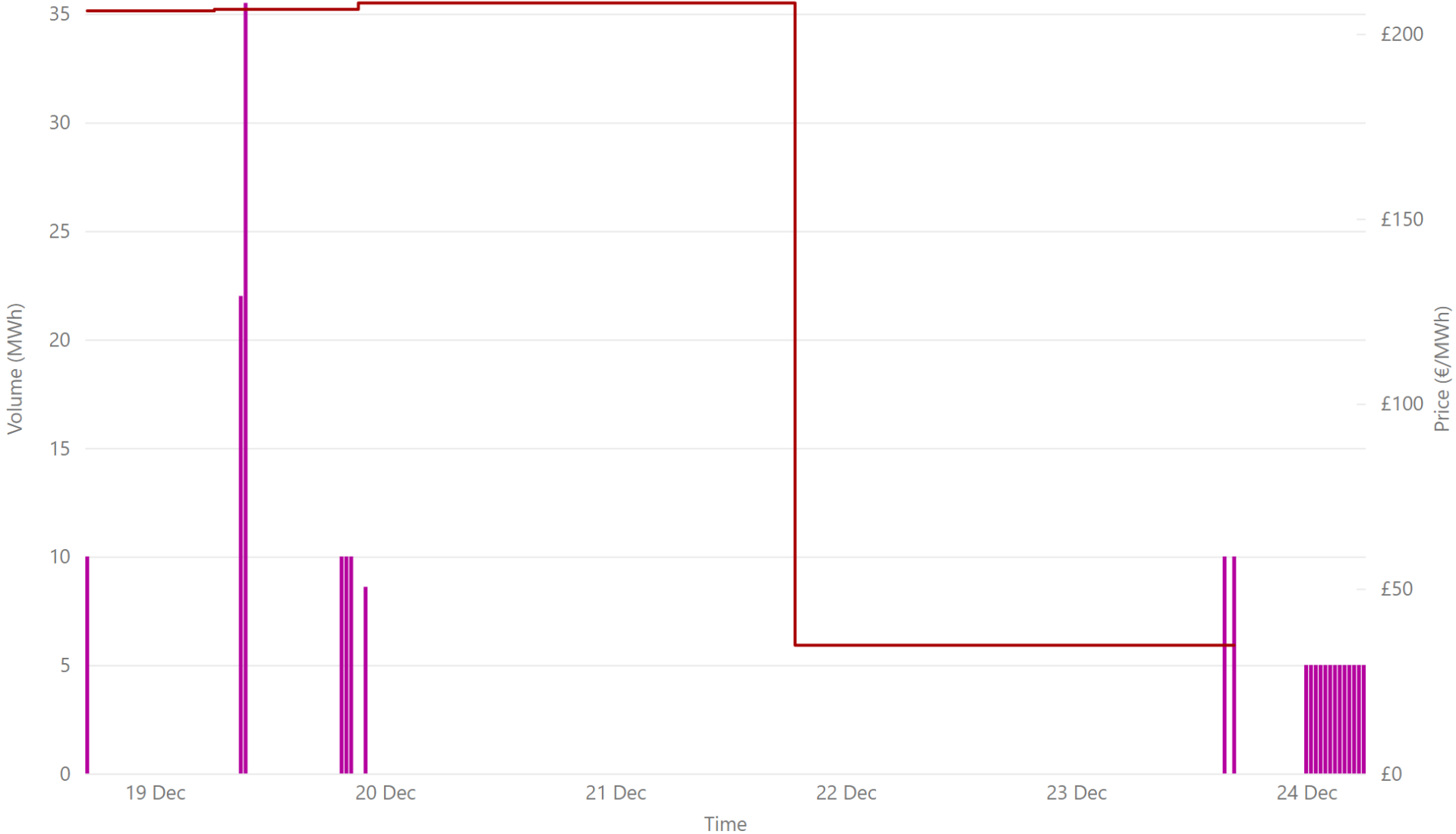
£57.90
Weekly Average SEM IDA3 Price*

£411,133.45
Weekly SEM IDA3 Market Value*

6,664.40
Weekly SEM IDA3 Volume MWh*

Weekly Intraday Continuous Summary - Week Commencing 18 December 2023

● IDC Volume* ● Weighted Average IDC Price*



£78.84
Weekly SEM IDC Average Price*

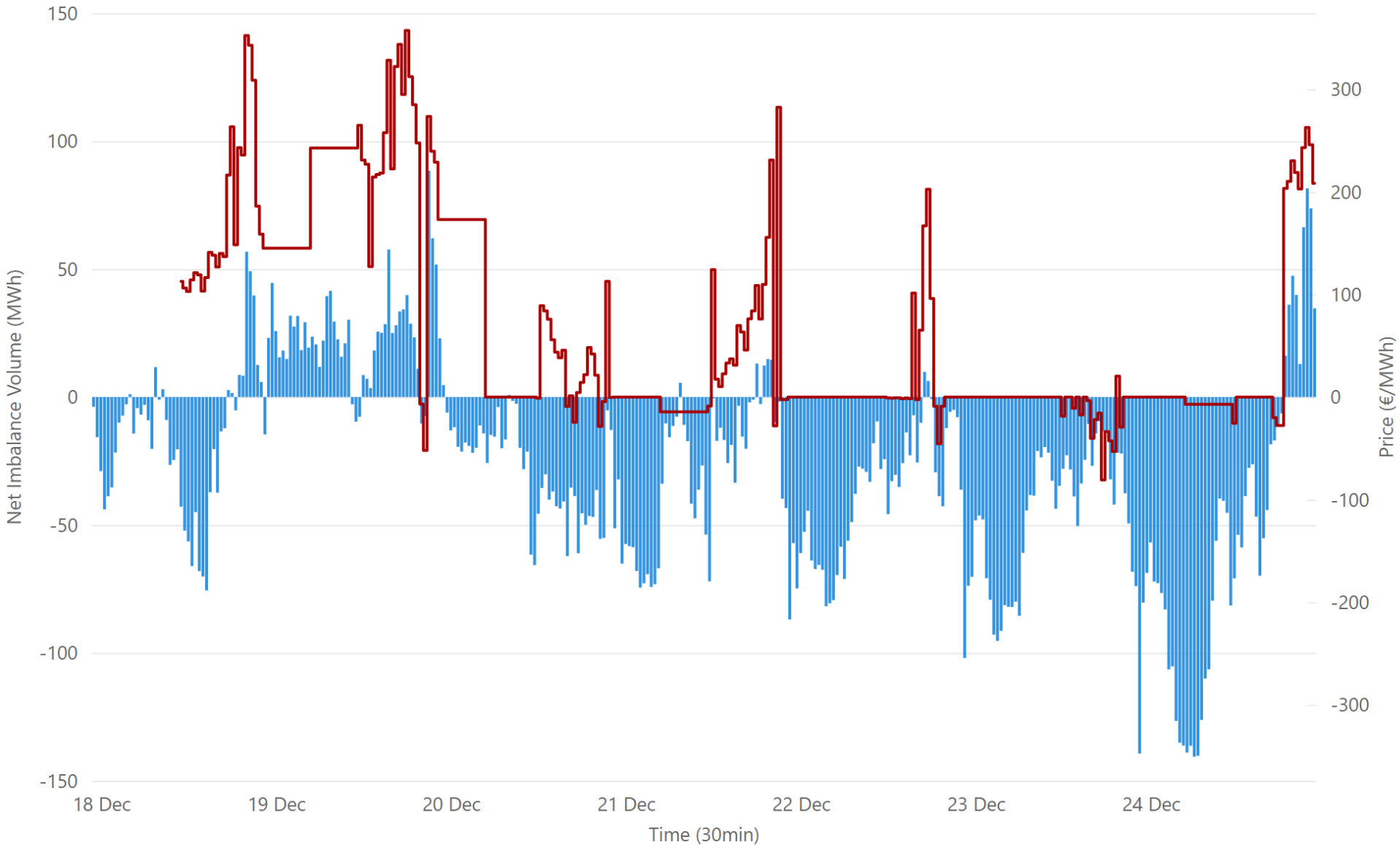
£78.84
Weekly SEM IDC Max Price*

£78.84
Weekly SEM IDC Min Price*

191.10
Weekly SEM IDC Volume MWh*

Weekly Balancing Market 30 Minute Summary - Week Commencing 18 December 2023

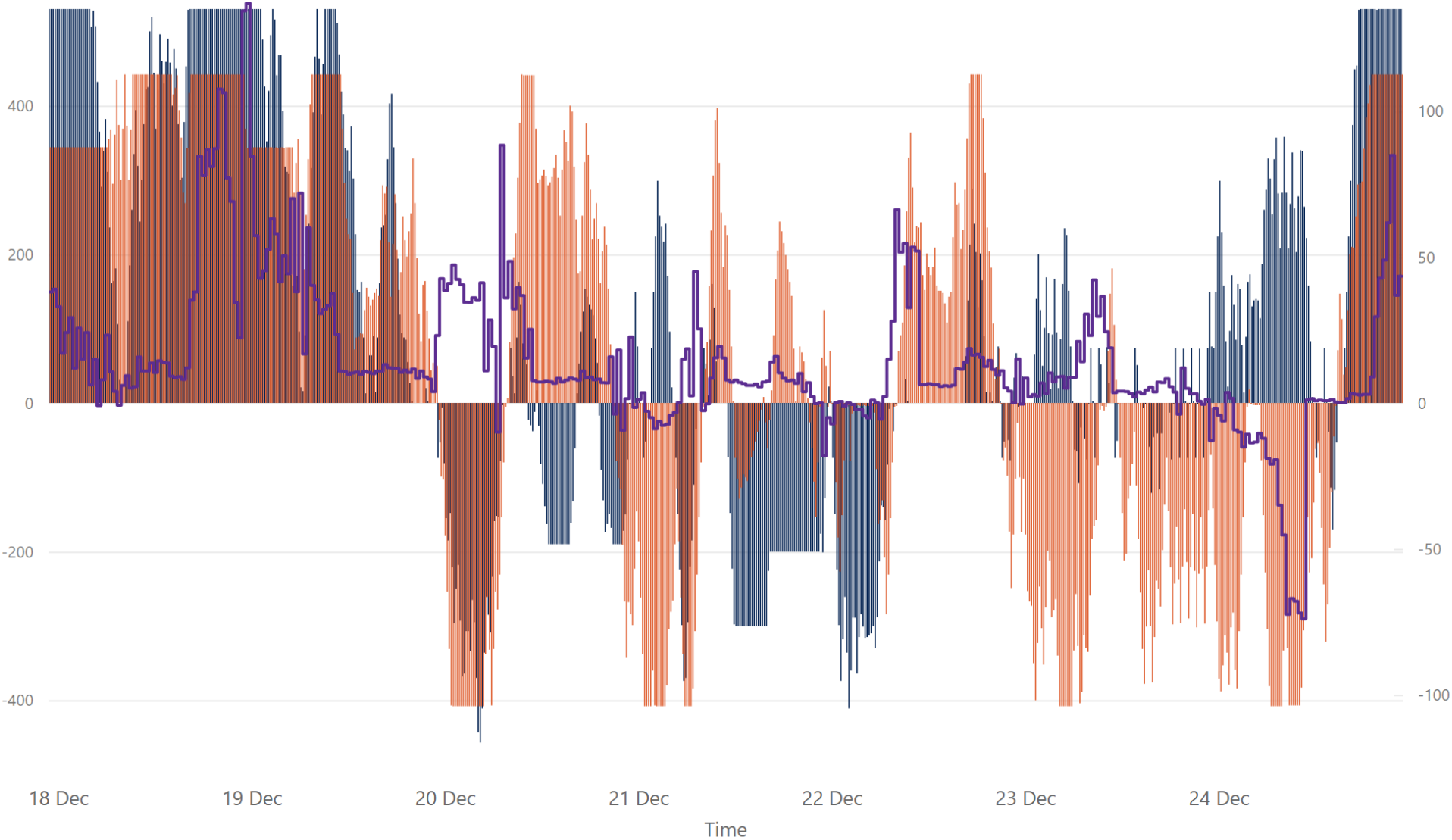
● Net Imbalance Volume* ● 30 Minute Imbalance Settlement Price*



41.73
Ave 30min Imbalance Price*
€ 207.47
Max 30min Imbalance Price*
-€ 46.63
Min 30min Imbalance Price*
44.59
Max Net Imbalance Volume*
-140.59
Min Net Imbalance Volume*

Weekly Interconnection Summary - Week Commencing 18 December 2023

● EWIC Volume (MW)* ● MOYLE Volume (MW)* ● SEM-GB Spread**

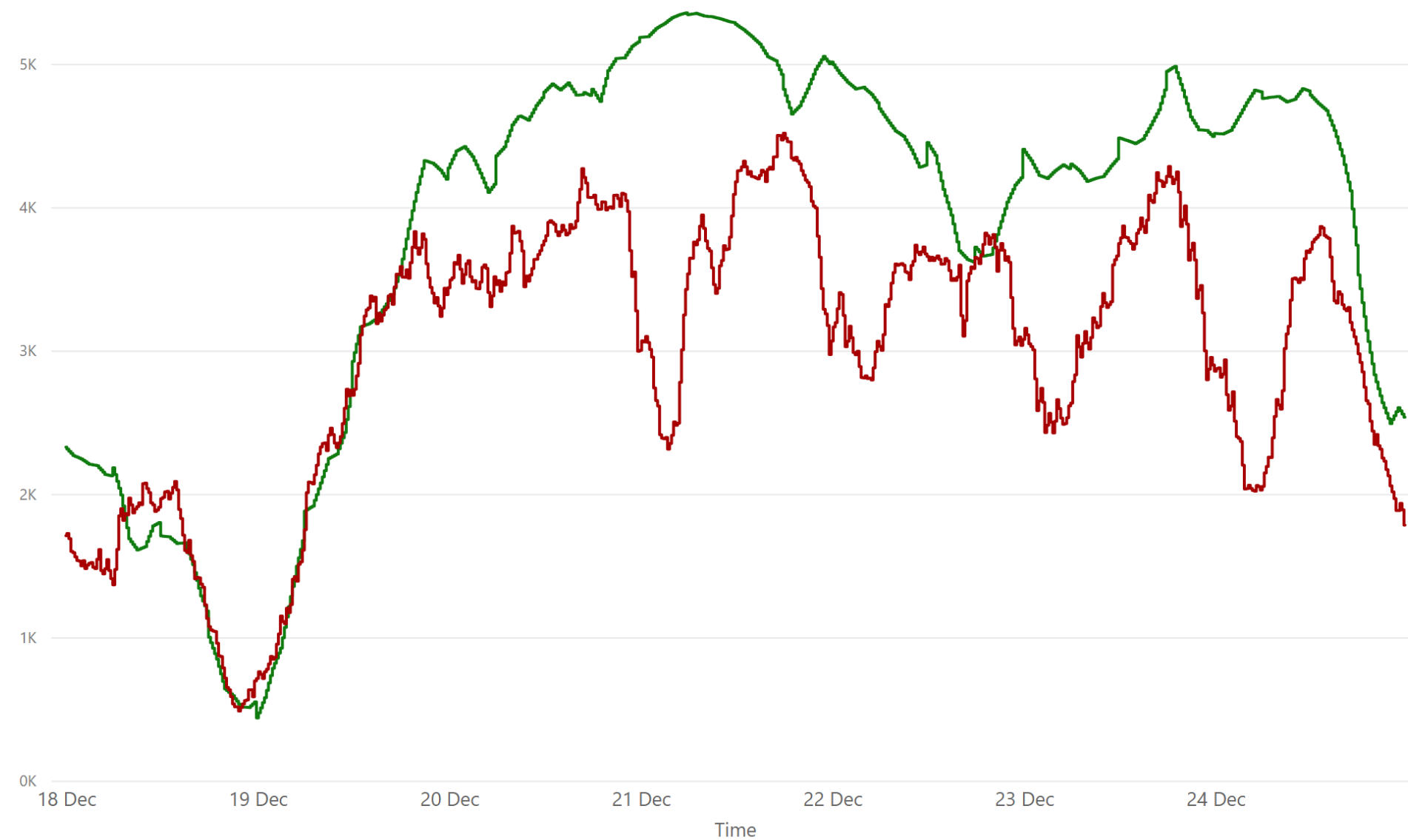


108,369.00
Weekly MOYLE (MW) Import*
-64,610.00
Weekly MOYLE (MW) Export*
43,759.00
Weekly MOYLE (MW) NET*
102,001.00
Weekly EWIC (MW) Import*
-36,868.00
Weekly EWIC (MW) Export*
65,133.00
Weekly EWIC (MW) NET*

Sources:
* EirGrid
** SEMO, EPEX & Nordpool

Weekly Wind Capacity Summary - Week Commencing 18 December 2023

● 15 Minute Forecast Wind (MW)* ● 15 Minute Actual Wind (MW)*



4517
Max Actual Wind (MW)*
486
Min Actual Wind (MW)*
5356
Max Forecast Wind (MW)*
437
Min Forecast Wind (MW)*