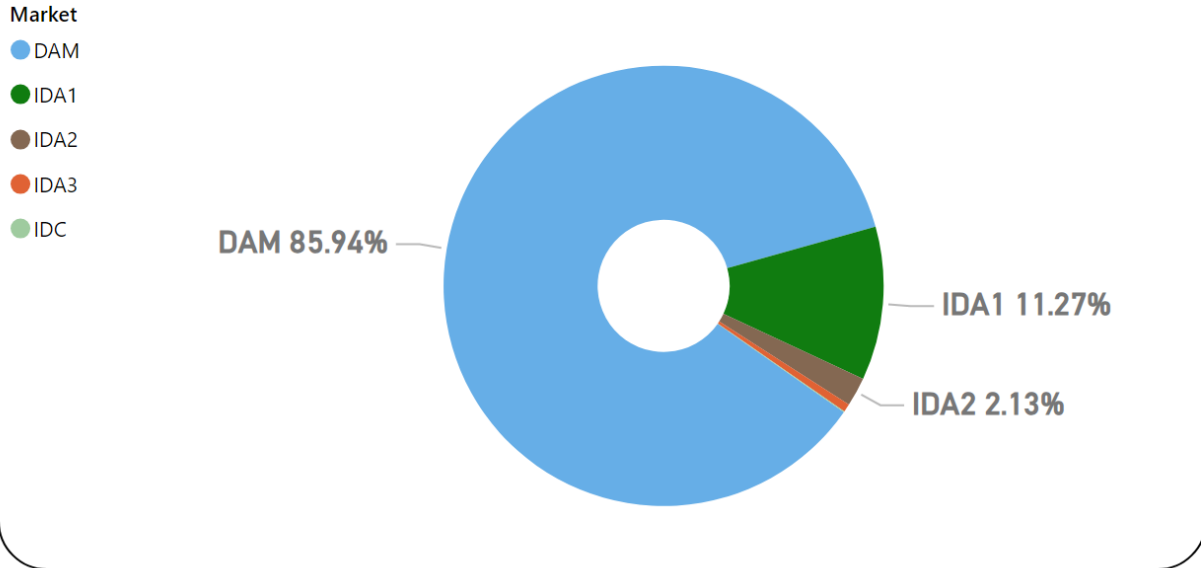


MMU Weekly Market Summary Report

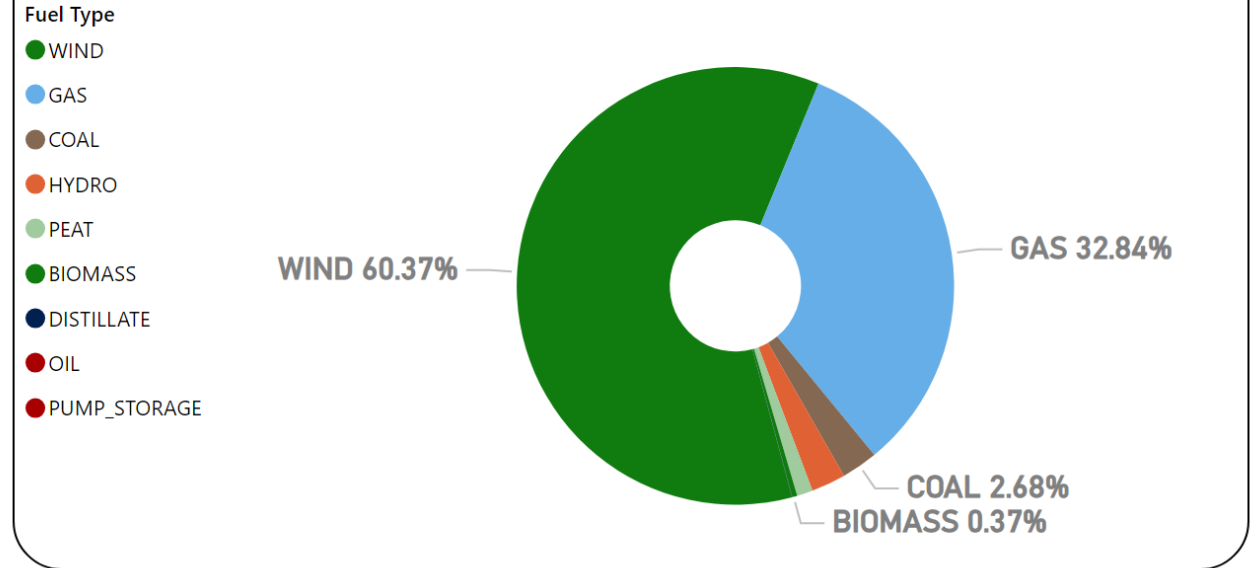
- Week Commencing Monday, January 22, 2024

Weekly Volume by Market



Source: SEMO PX

Weekly Fuel Mix



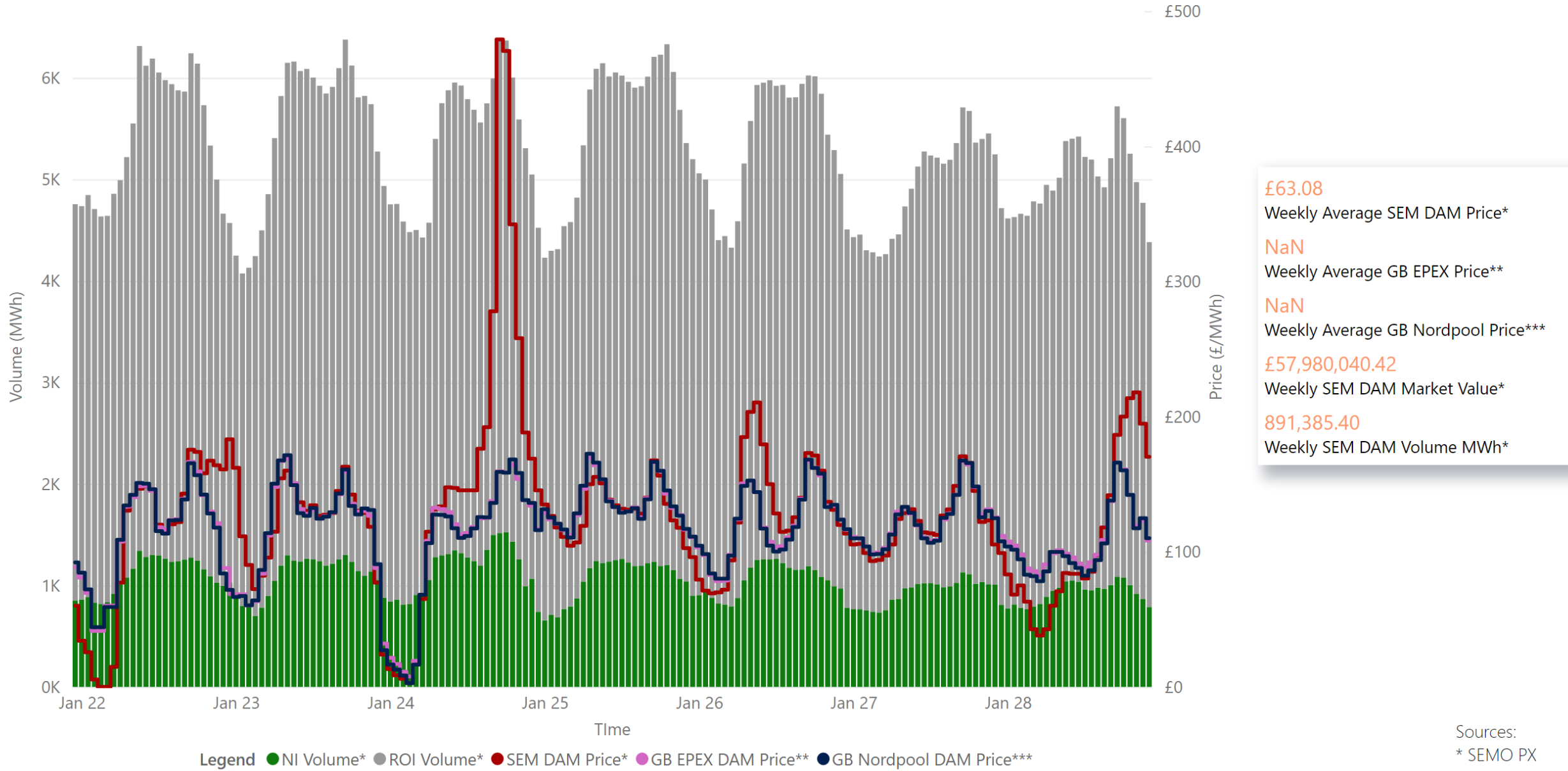
Source: SEMO PX

Summary Table

Date	Daily System Demand (MWh)*	Daily Dam Price (£/MWh)**	Daily Actual Wind (MWh)*	Daily Average Gas Price (p/th)***	Daily Average Coal Price (€/t)***	Daily Average Carbon Price (€/t)***
Monday, January 22, 2024	122,261.25	55.52	80,645.00	65.75	105.35	59.99
Tuesday, January 23, 2024	127,104.75	64.73	85,307.50	65.40	105.50	60.88
Wednesday, January 24, 2024	124,729.25	85.23	50,403.75	69.85	105.80	60.88
Thursday, January 25, 2024	124,116.50	66.44	87,706.25	66.60	105.60	61.24
Friday, January 26, 2024	122,445.00	66.46	75,928.00	69.05	106.00	61.00
Saturday, January 27, 2024	113,700.75	61.18	82,041.00	69.05	106.00	61.00
Sunday, January 28, 2024	109,793.75	54.74	71,912.50	69.05	106.00	61.00

Sources: * EirGrid ** SEMO PX *** Oil Market Journal

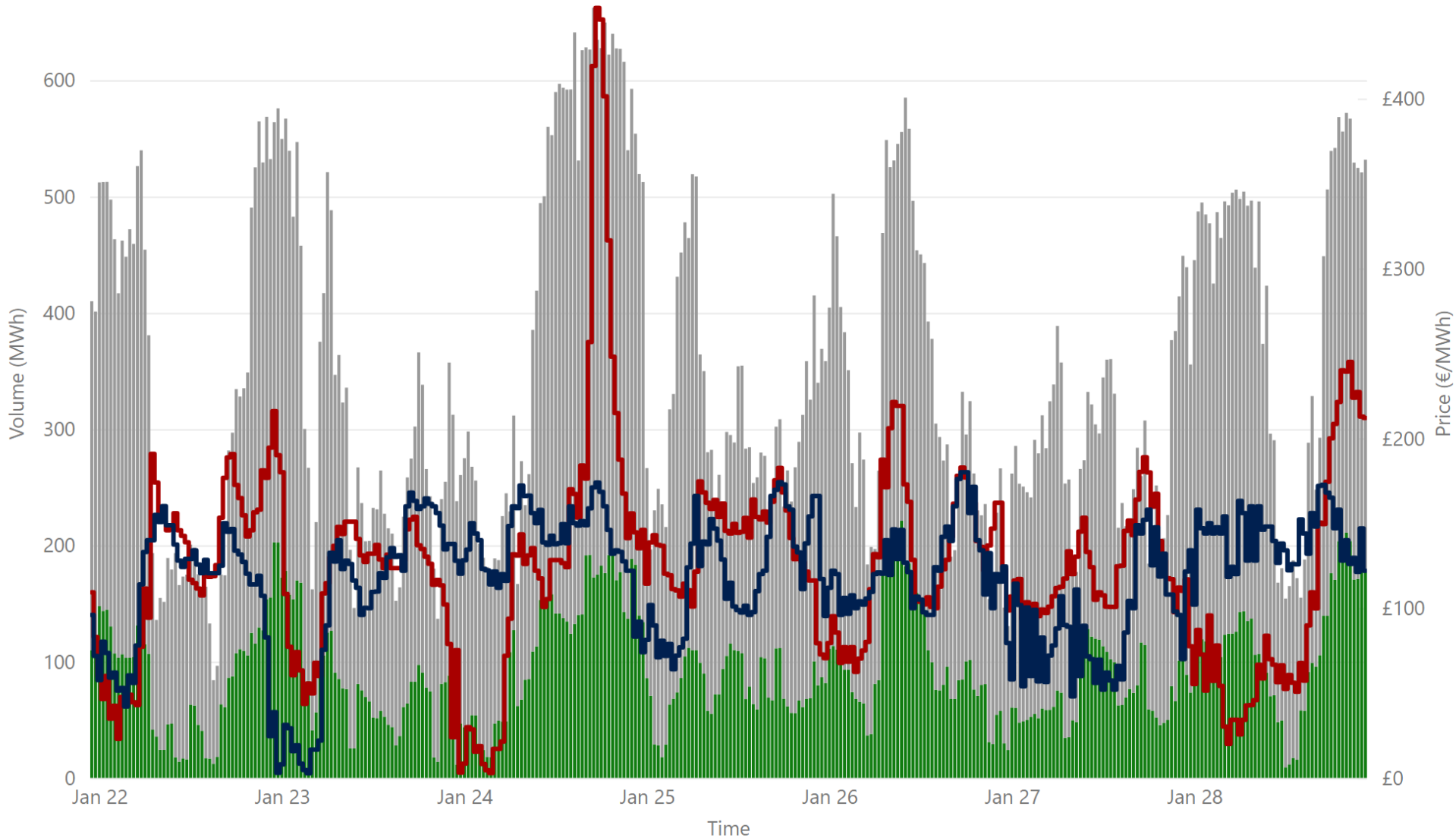
Weekly Day Ahead Market Summary - Week Commencing Monday, January 22, 2024



Sources:
 * SEMO PX
 ** EPEX
 *** Nordpool

Weekly Intraday Auction 1 Summary - Week Commencing Monday, January 22, 2024

Legend ● NI Volume* ● ROI Volume* ● SEM IDA1 Price* ● GB IDA1 Price**



£62.34
Weekly Average SEM IDA1 Price*

£59.03
Weekly Average GB IDA1 Price**

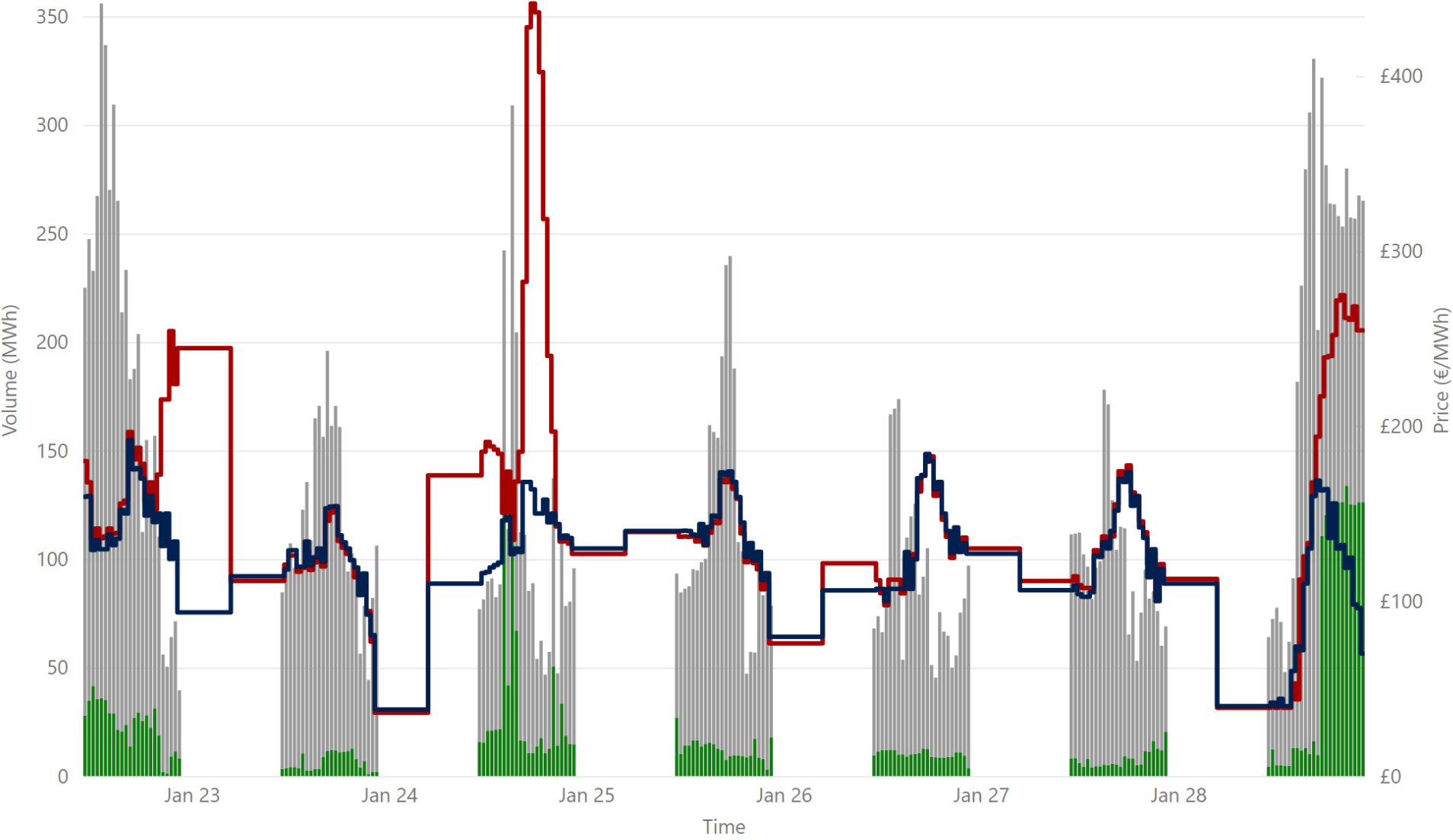
£7,675,242.26
Weekly SEM IDA1 Market Value*

116,934.20
Weekly SEM DAM Volume MWh*

Sources:
* SEMO PX
** EPEX

Weekly Intraday Auction 2 Summary - Week Commencing Monday, January 22, 2024

Jurisdiction Volume ● NI Volume* ● ROI Volume* ● SEM IDA2 Price* ● GB Price**



£77.02
 Weekly Average SEM IDA2 Price*

£64.85
 Weekly Average GB IDA2 Price**

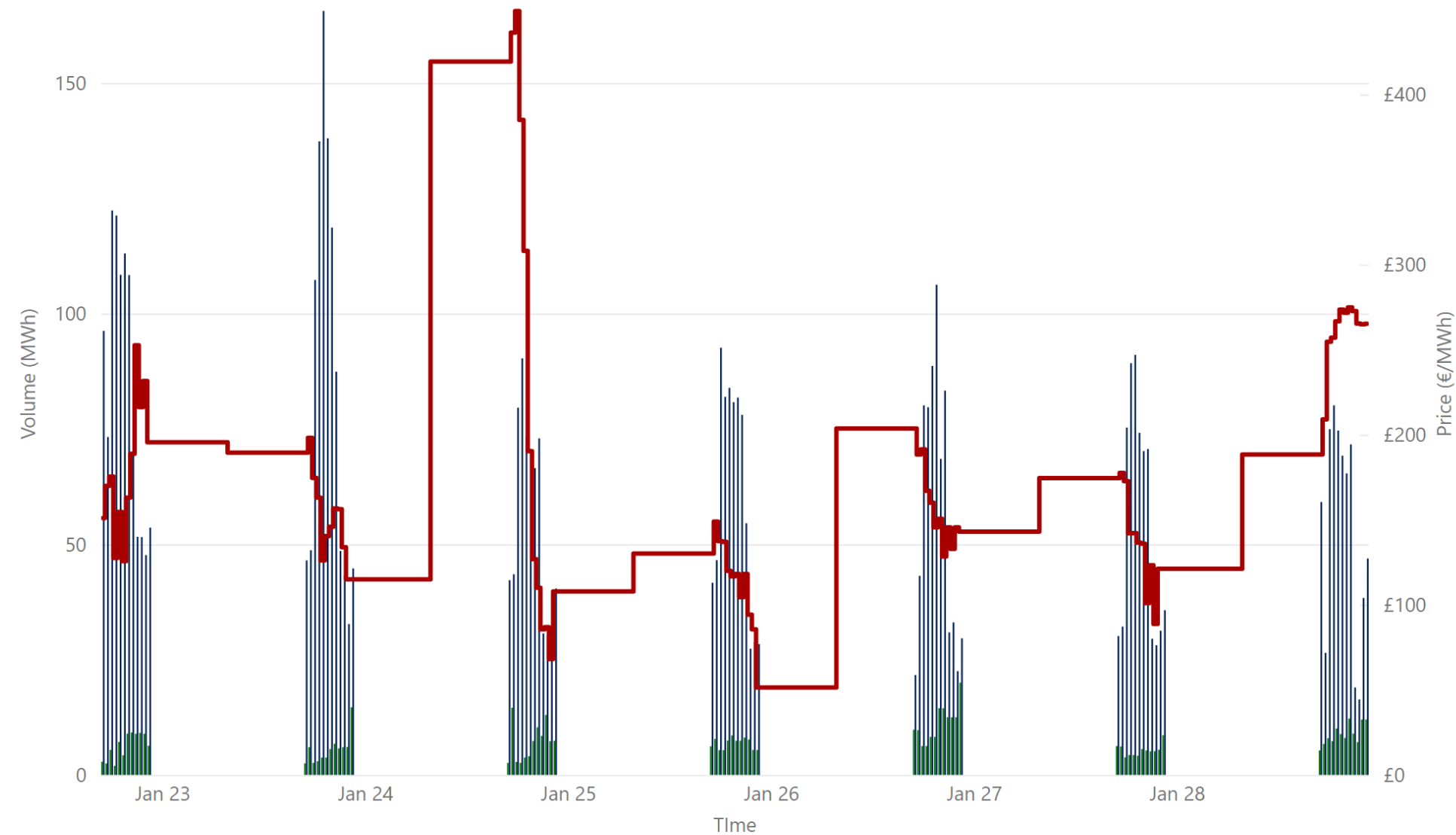
£1,770,964.40
 Weekly SEM IDA2 Market Value*

22,101.55
 Weekly SEM IDA2 Volume MWh*

Sources:
 * SEMO PX
 ** EPEX

Weekly Intraday Auction 3 Summary - Week Commencing Monday, January 22, 2024

Jurisdiction ● NI Volume* ● ROI Volume* ● SEM Price*

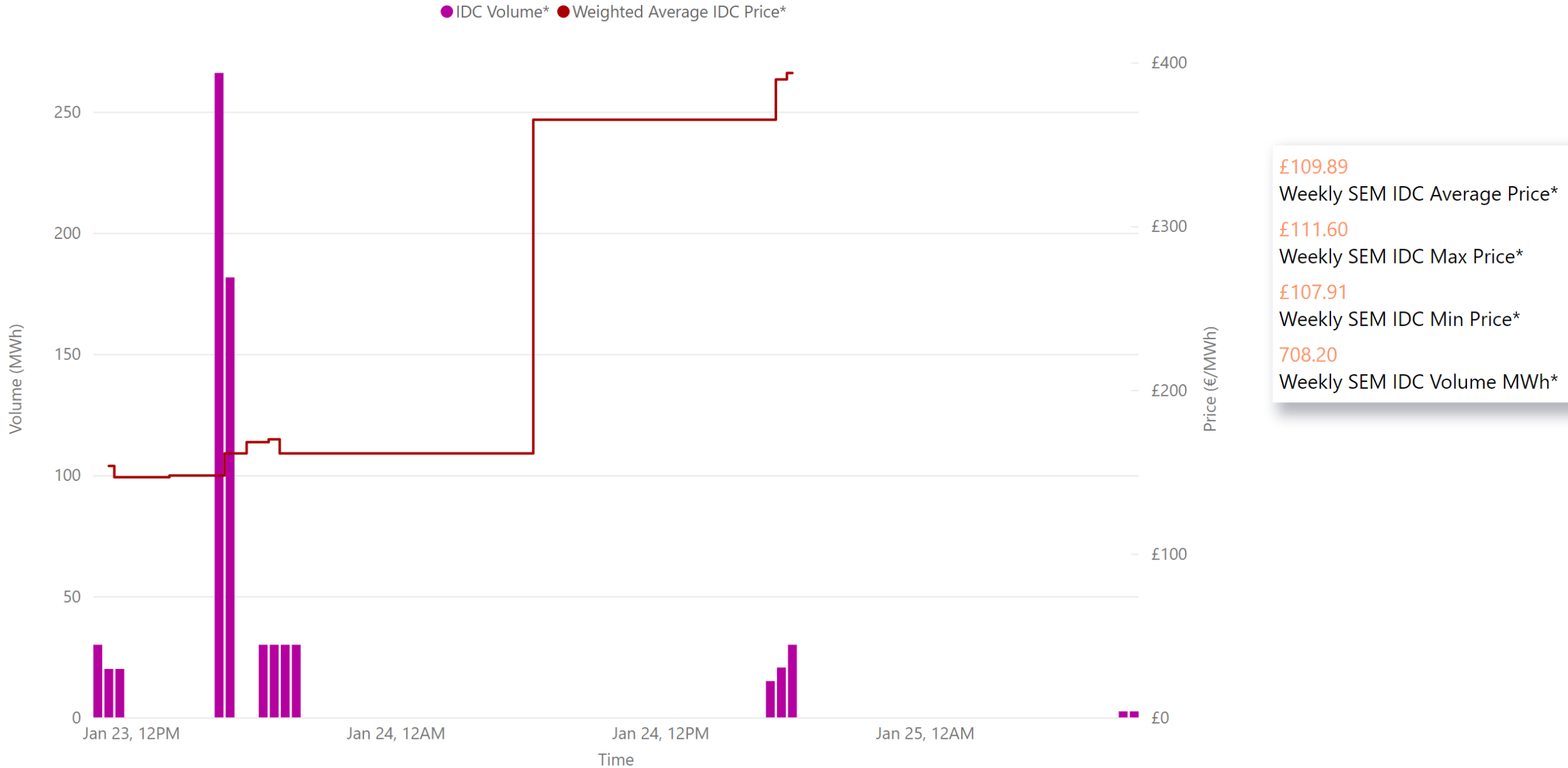


£87.50
Weekly Average SEM IDA3 Price*

£528,106.77
Weekly SEM IDA3 Market Value*

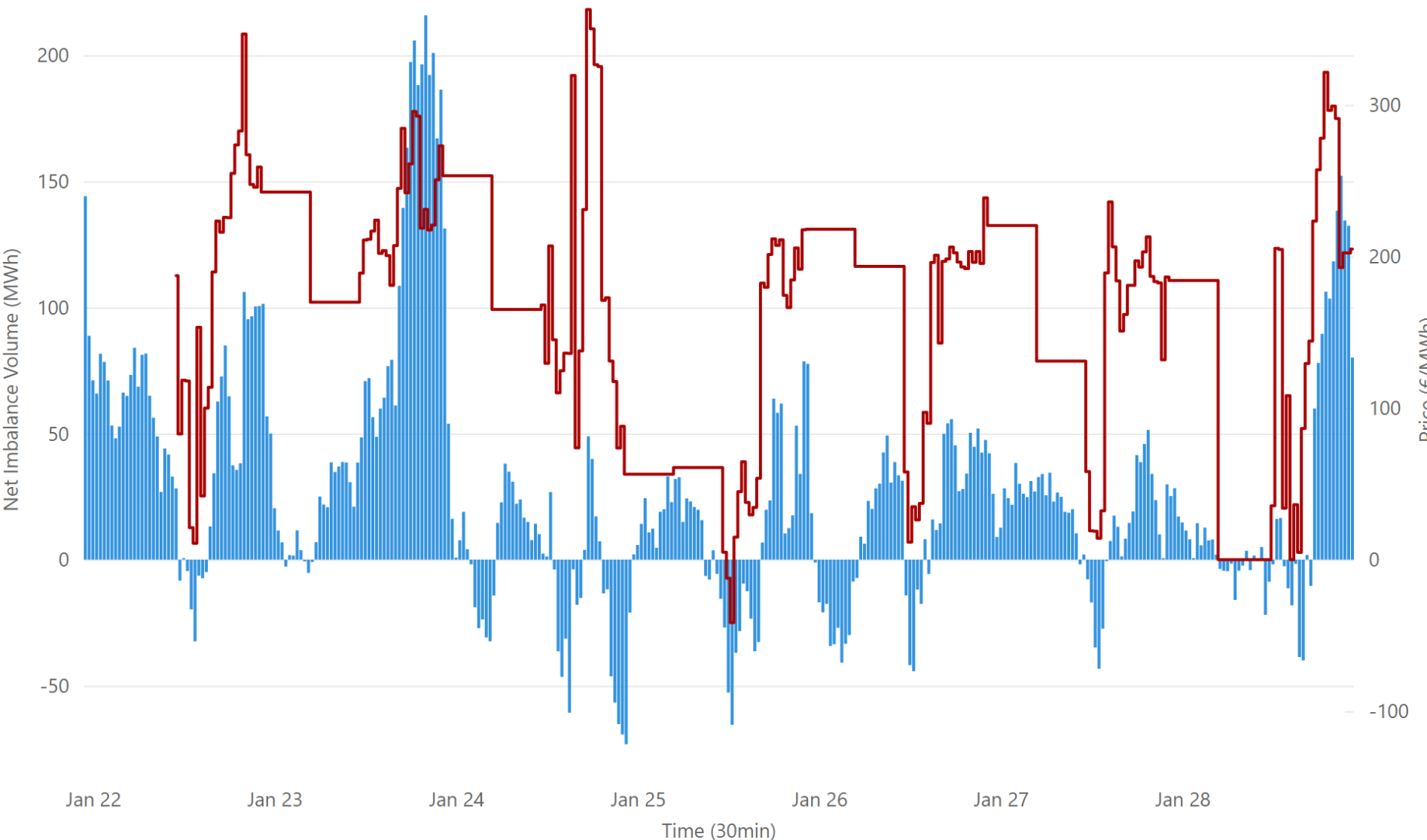
6,047.45
Weekly SEM IDA3 Volume MWh*

Weekly Intraday Continuous Summary - Week Commencing Tuesday, January 23, 2024



Weekly Balancing Market 30 Minute Summary - Week Commencing Monday, January 22, 2024

● Net Imbalance Volume* ● 30 Minute Imbalance Settlement Price*

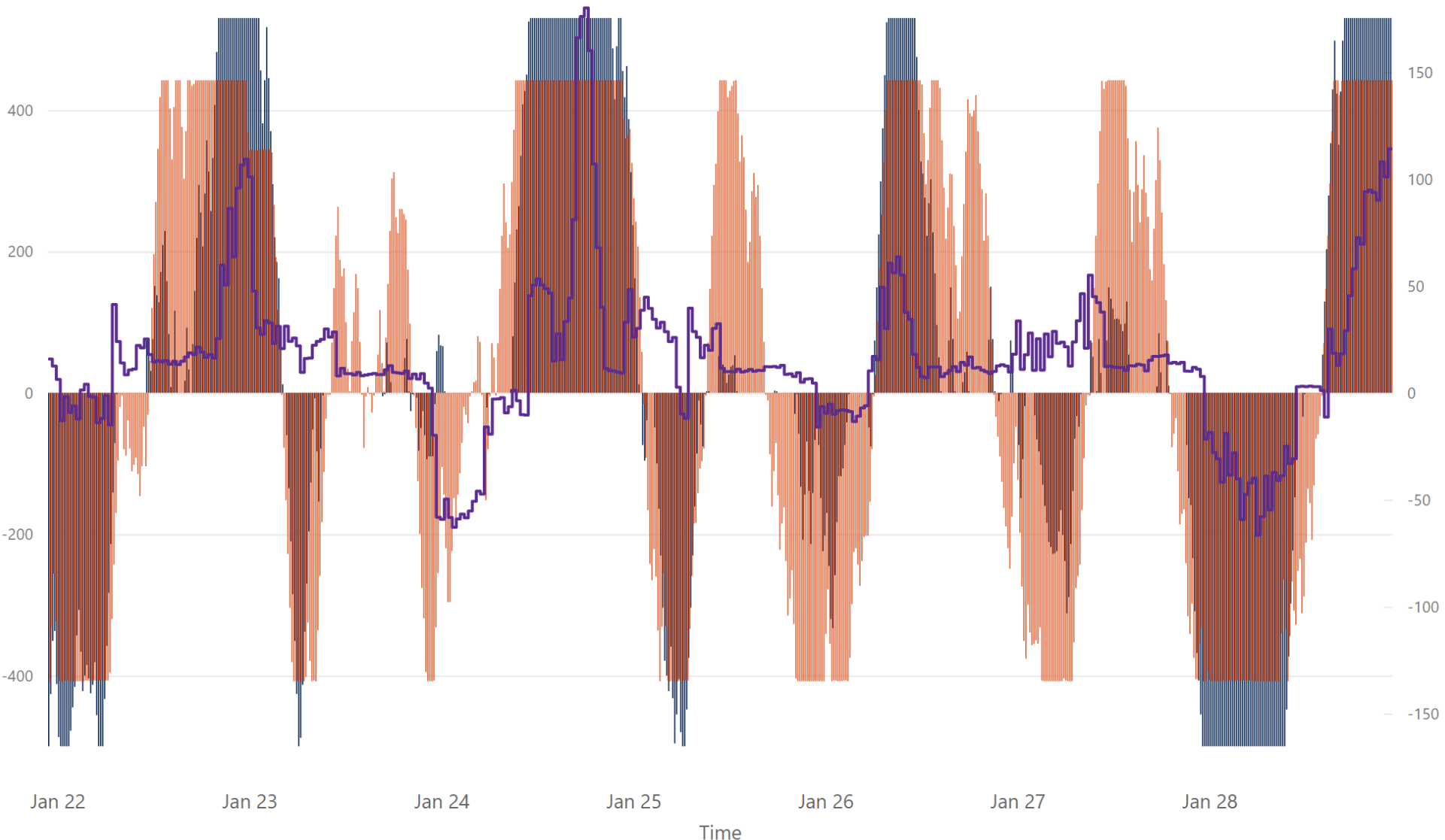


- 83.81 Ave 30min Imbalance Price*
- € 212.07 Max 30min Imbalance Price*
- € 24.25 Min 30min Imbalance Price*
- 144.10 Max Net Imbalance Volume*
- 40.86 Min Net Imbalance Volume*

Source: * SEMO

Weekly Interconnection Summary - Week Commencing Monday, January 22, 2024

● EWIC Volume (MW)* ● MOYLE Volume (MW)* ● SEM-GB Spread**



114,672.00	Weekly MOYLE (MW) Import*
-89,809.00	Weekly MOYLE (MW) Export*
24,863.00	Weekly MOYLE (MW) NET*
82,151.00	Weekly EWIC (MW) Import*
-58,935.00	Weekly EWIC (MW) Export*
23,216.00	Weekly EWIC (MW) NET*

Sources:
 * EirGrid
 ** SEMO, EPEX & Nordpool

Weekly Wind Capacity Summary - Week Commencing Monday, January 22, 2024

● 15 Minute Forecast Wind (MW)* ● 15 Minute Actual Wind (MW)*



4567
Max Actual Wind (MW)*
407
Min Actual Wind (MW)*
5080
Max Forecast Wind (MW)*
672
Min Forecast Wind (MW)*