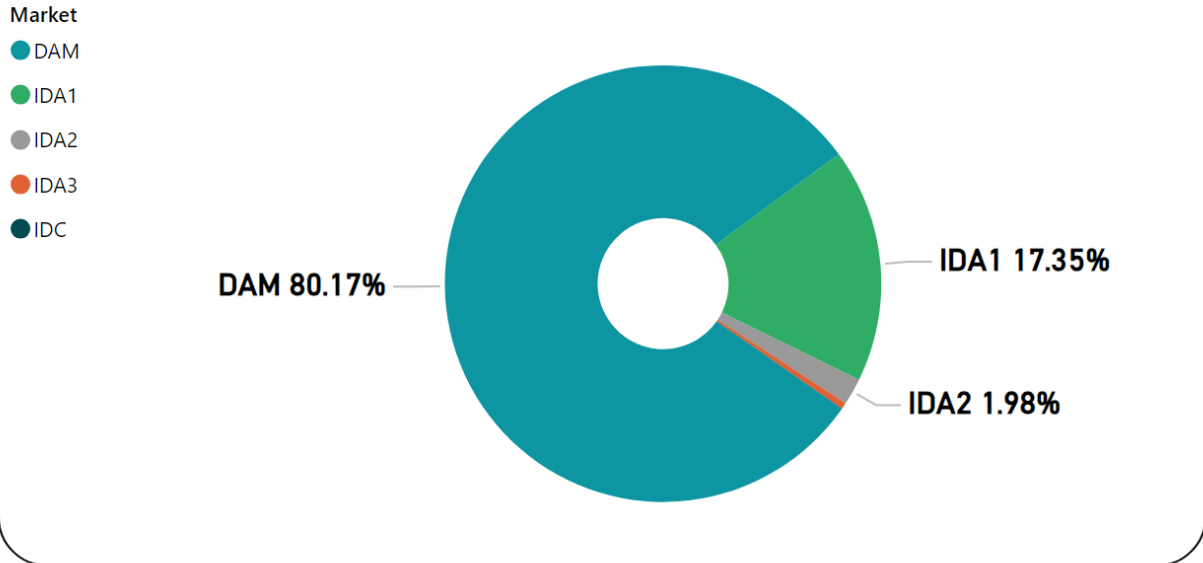


MMU Weekly Market Summary Report

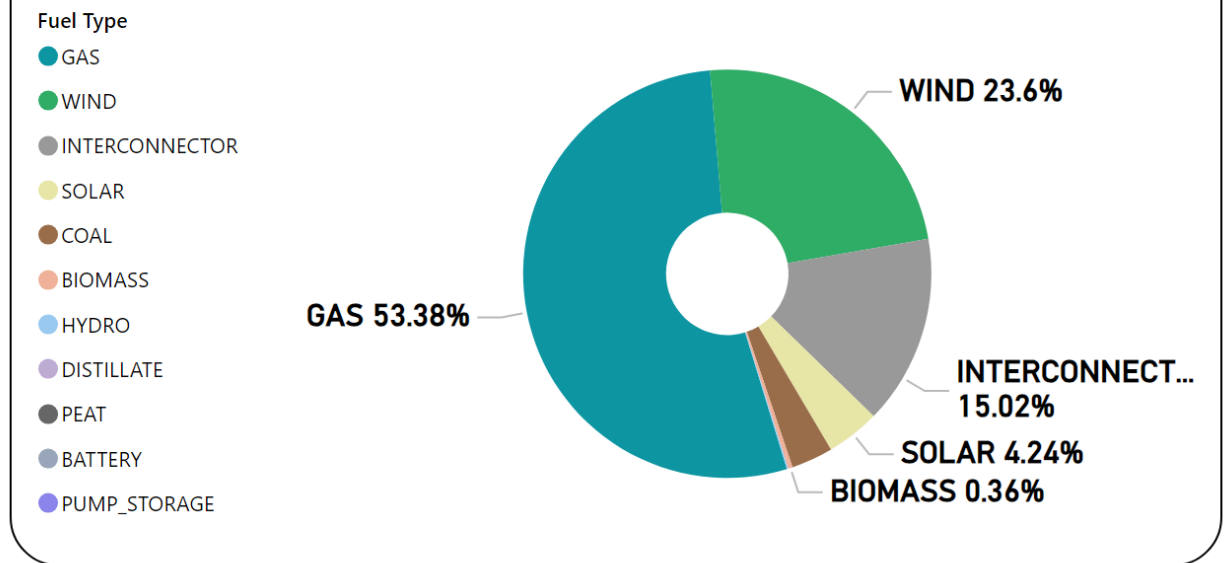
Week Commencing - 19 May 2025



Weekly Volume by Market



Weekly Fuel Mix

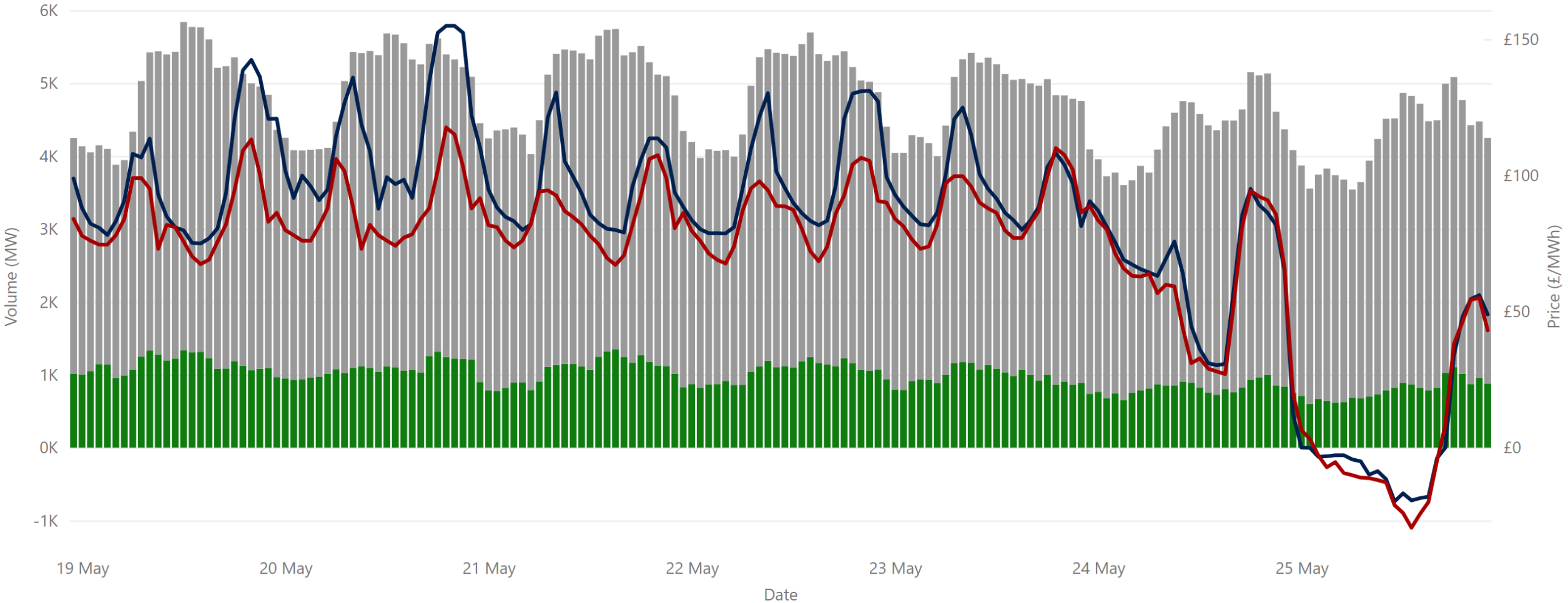


Summary Table

Date	Daily System Demand (MWh)*	Daily DAM Price (£/MWh)**	Daily Actual Wind (MWh)*	Daily Average Gas Price (p/th)***	Daily Average Coal Price (€/t)***	Daily Average Carbon Price (€/t)***
19 May 2025	103,010.75	97.00	18,786.00	84.00	95.25	70.39
20 May 2025	108,524.25	115.84	6,537.25	90.45	96.20	73.40
21 May 2025	105,549.75	96.43	13,244.50	88.28	96.05	72.74
22 May 2025	106,699.25	100.30	10,127.00	85.76	96.45	72.21
23 May 2025	109,971.75	95.45	39,939.75	87.71	96.25	71.65
24 May 2025	100,811.00	67.03	60,375.75	87.71	96.25	71.65
25 May 2025	92,212.75	4.82	55,027.75	87.71	96.25	71.65

Sources: *EirGrid **SEMO PX ***Oil Market Journal

Weekly Day Ahead Market Summary



Legend ● NI Volume* ● ROI Volume* ● SEM DAM Price* ● GB EPEX Price**

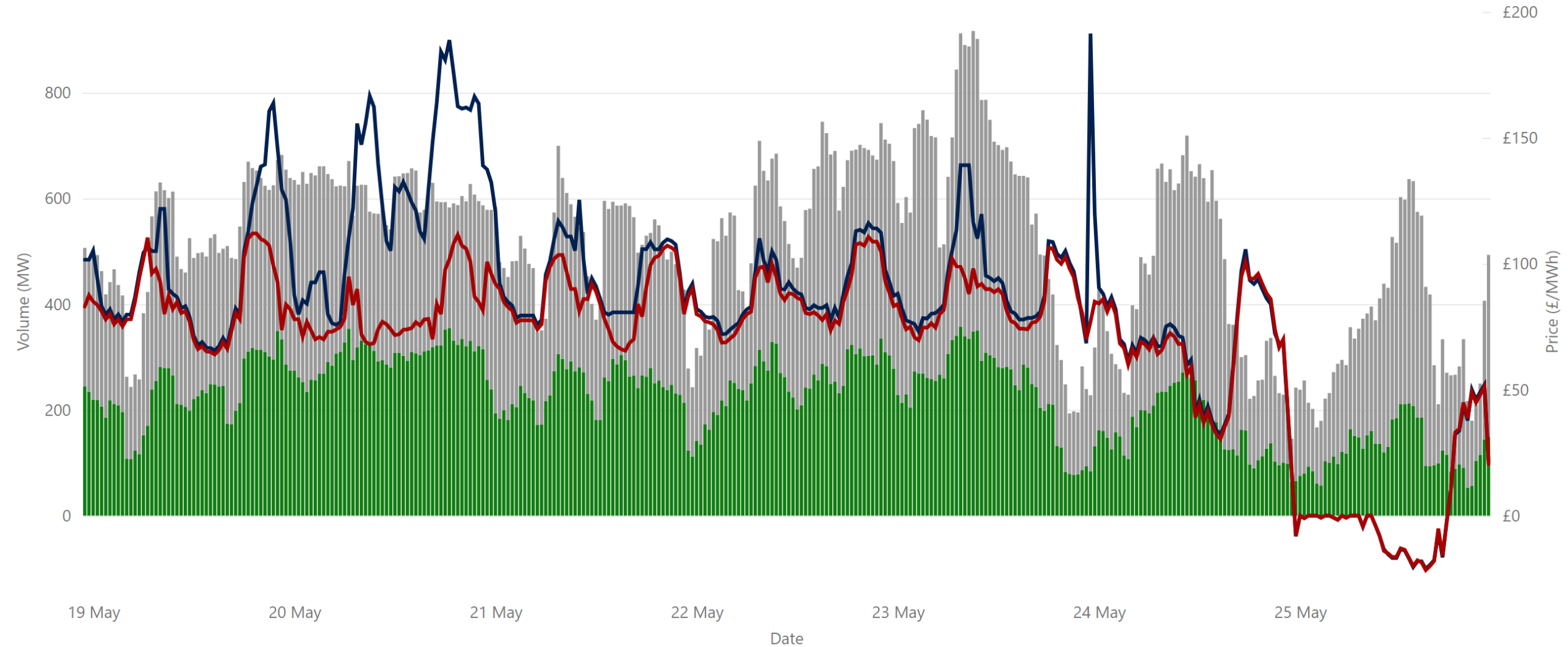
£81.93
Weekly Average SEM DAM Price*

£70.75
Weekly Average GB EPEX Price**

£67,258,203.69
Weekly SEM DAM Market Value*

798,037.40
Weekly SEM DAM Volume MWh*

Weekly Intraday Auction 1 Summary



Legend ● NI Volume* ● ROI Volume* ● SEM IDA1 Price* ● GB IDA1 Price**

£82.47
Weekly Average SEM IDA1 Price*

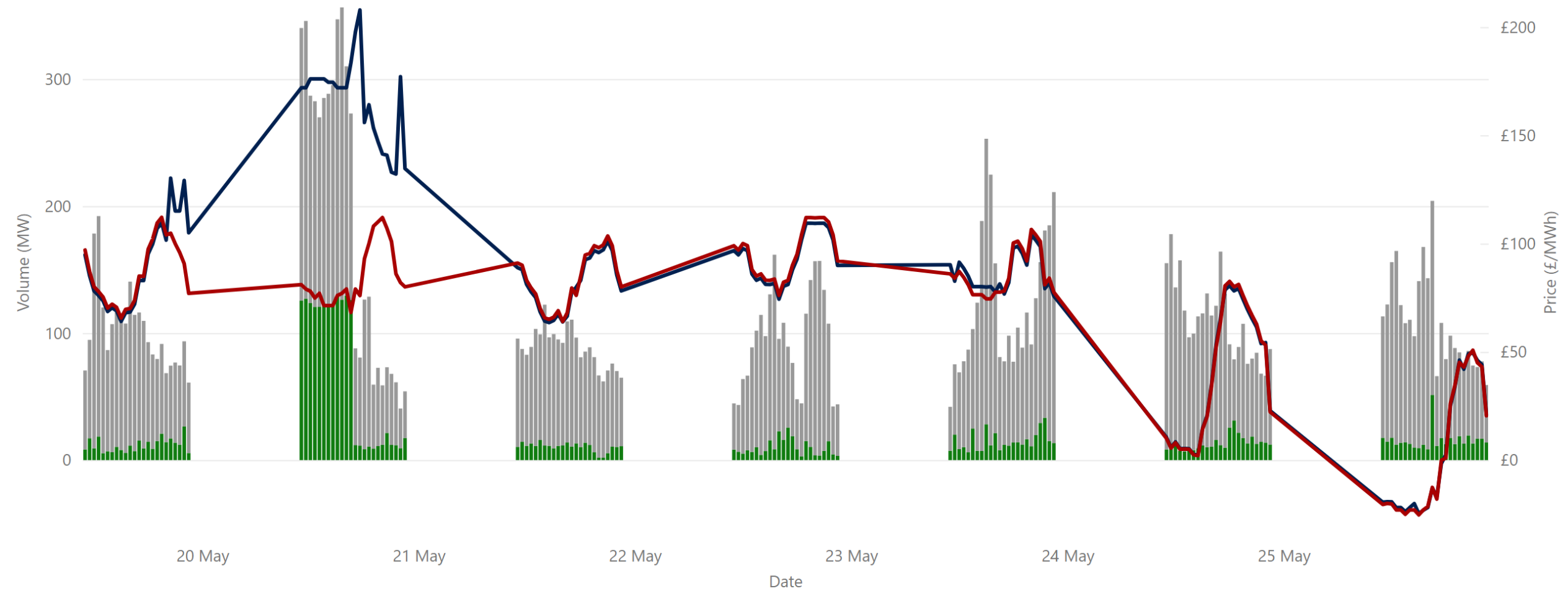
£70.68
Weekly Average GB IDA1 Price**

£15,228,946.65
Weekly SEM IDA1 Market Value*

172,739.75
Weekly SEM IDA1 Volume MWh*

Sources: * SEMO PX ** EPEX

Weekly Intraday Auction 2 Summary



Jurisdiction Volume ● NI Volume* ● ROI Volume* ● SEM IDA2 Price* ● GB IDA2 Price**

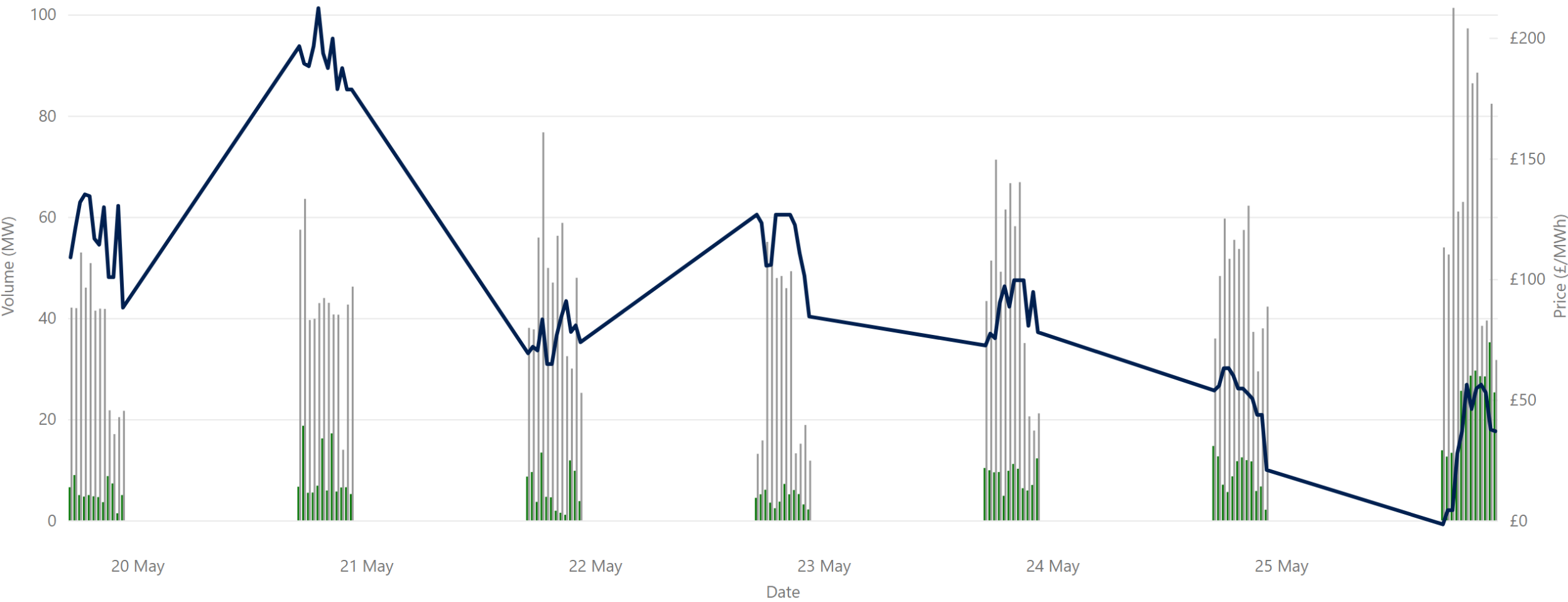
£80.11
Weekly Average SEM IDA2 Price*

£68.43
Weekly Average GB IDA2 Price**

£1,727,198.44
Weekly SEM IDA2 Market Value*

19,724.80
Weekly SEM IDA2 Volume MWh*

Weekly Intraday Auction 3 Summary



Jurisdiction ● NI Volume* ● ROI Volume* ● SEM Price *

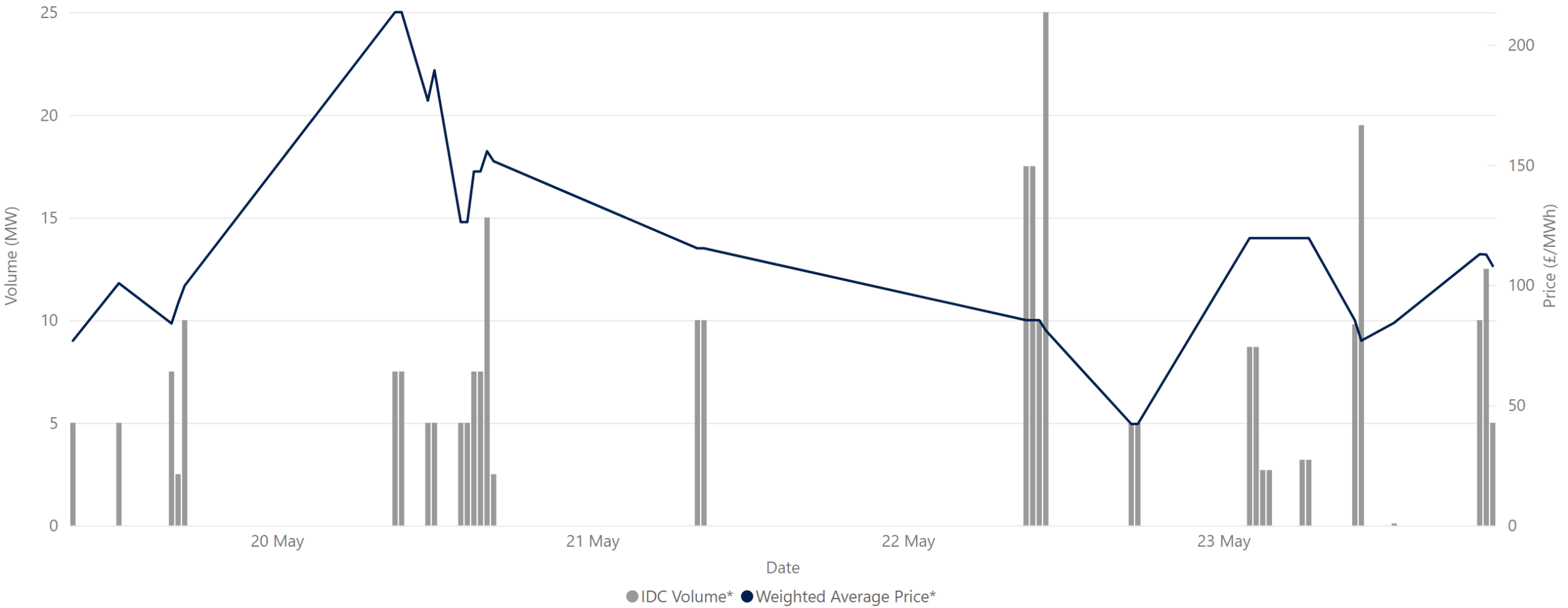
£96.15
Weekly Average SEM IDA3 Price*

£412,563.38
Weekly SEM IDA3 Market Value*

4,625.70
Weekly SEM IDA3 Volume MWh*

Source: * SEMO PX

Weekly Intraday Continuous Summary



115.74

Weekly SEM IDC Average Price*

£213.49

Weekly SEM IDC Max Price*

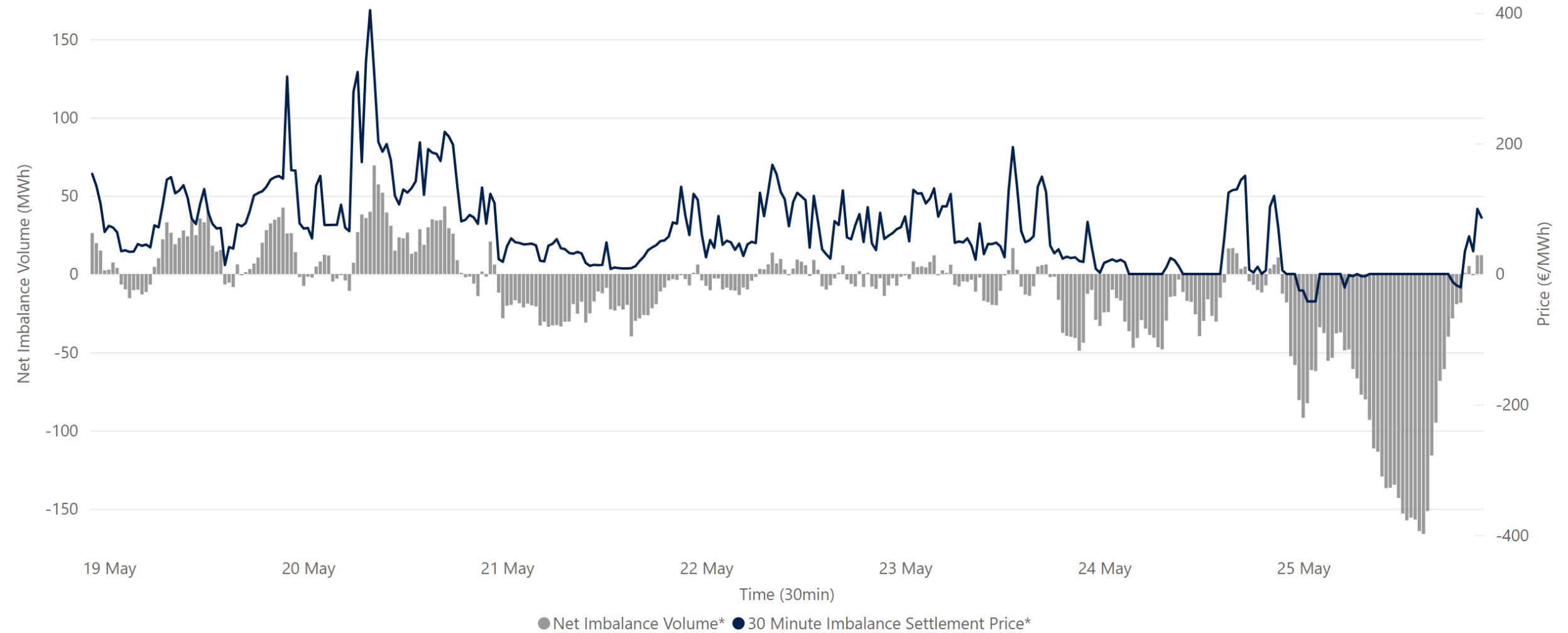
£42.23

Weekly SEM IDC Min Price*

283.60

Weekly SEM IDC Volume MWh*

Weekly Balancing Market 30 Minute Summary



£66.15

Ave 30min Imbalance Price*

£404.08

Max 30min Imbalance Price*

-£41.96

Min 30min Imbalance Price*

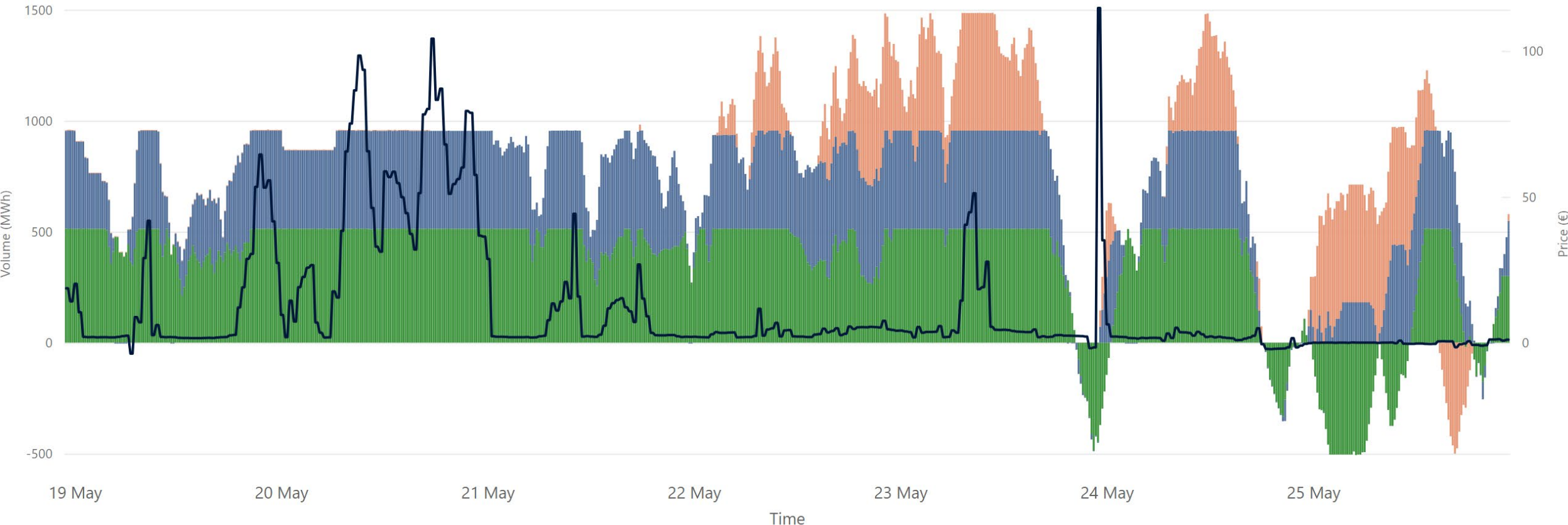
69.31

Max Net Imbalance Volume*

-166.00

Min Net Imbalance Volume*

Weekly Interconnection Summary



● GREENLINK(MW) ● MOYLE(MW) ● EWIC(MW) ● SEM-GB IDA1 Spread (€)

54,052.50
MOYLE (MW) Import*

-165.00
MOYLE (MW) Export*

53,887.50
MOYLE (MW) Net*

20,128.75
EWIC (MW) Import*

-1,124.50
EWIC (MW) Export*

19,004.25
EWIC (MW) NET*

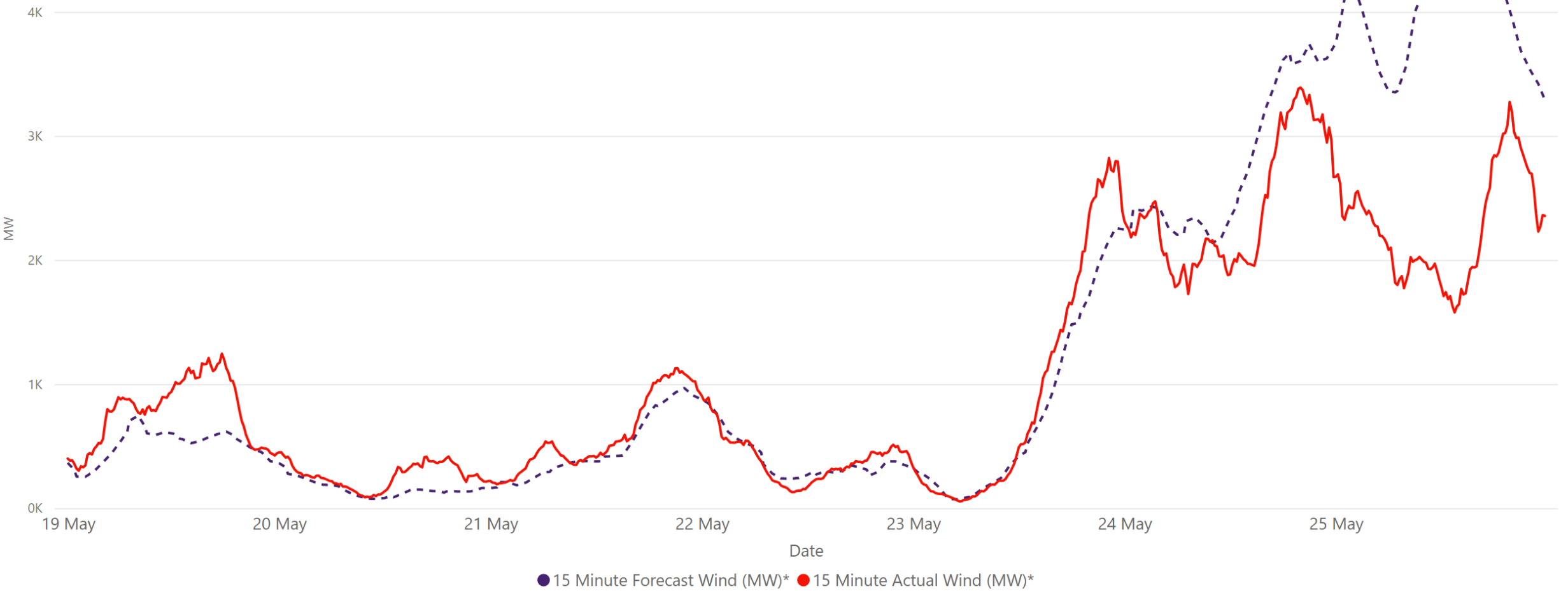
65,886.00
GREENLINK (MW) Import*

-5,679.00
GREENLINK (MW) Export*

60,207.00
GREENLINK (MW) NET*

Sources: * EirGrid ** SEMO, EPEX & Nordpool ***Elexon

Weekly Wind Capacity Summary



3390

Max Actual Wind (MW)*

54

Min Actual Wind (MW)*

4474

Max Forecast Wind (MW)*

71

Min Forecast Wind (MW)*