



# NIE NETWORKS RGLG UPDATE

## 9<sup>TH</sup> JANUARY 2018

# Phase 1 Closure & Current Applications

- 185 (256 MW) connection offers issued
- 30<sup>th</sup> Nov 2017- NIE Networks issued notice of inability to connect to 241 applicants (987 MW)
- Currently 256 MW of applications in “queue”- on 90 day standard or extended due to capacity being available (187 MW queuing at Kells Cluster)
- Expect to issue c20 SSG offers over coming months
- Expect to issue up to c10 LSG offers over coming months

## SSG

- 235+ SSG delivered in 2017
- 63 currently in construction (28 of which are awaiting final customer installation works in order to energise)
- 39 in pre-construction (Typically delayed by wayleave, planning and/or lease issues)- some of these still have potential to energise by end March

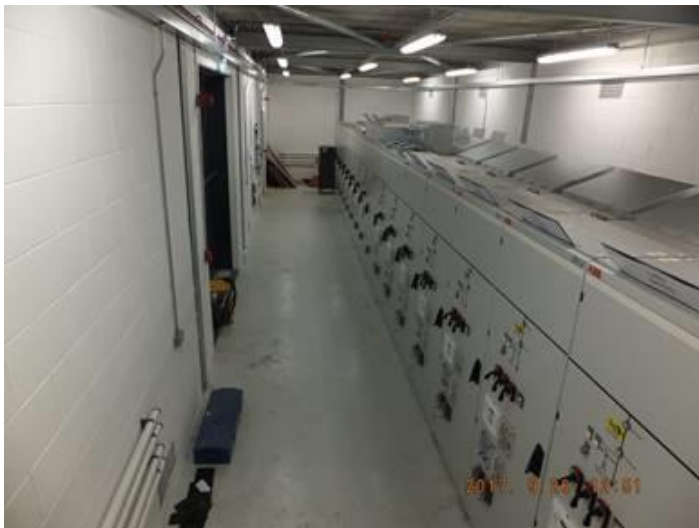
## LSG

- 17 'major' LSG projects delivered in 2017
- 7 further 'major' LSG projects to be energised by end March 2018
- Continue to work closely with SONI, developers and various contractors in order to meet challenging deadlines

# Drumquin Cluster & Dromore 110 kV S/S



- Project proceeding to plan
- Expected completion June 2018
- Civil works complete at both sites
- Steelwork well advanced
- Commissioning commenced
- 110kV OHL approx. 20% complete
- Majority of landowner issues resolved



# Dromore 110kV Switching Site Photos

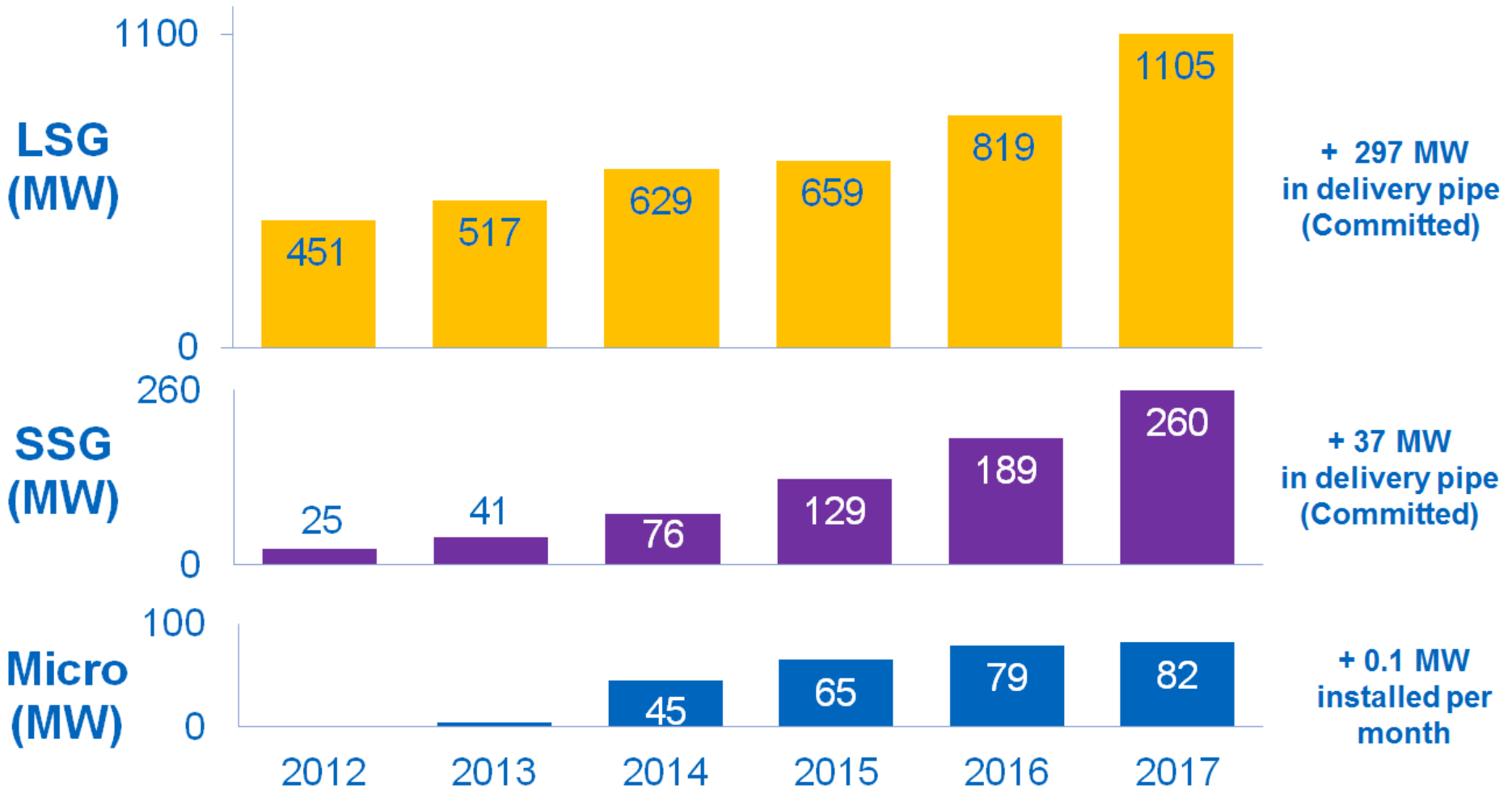


# RGLG Status Report

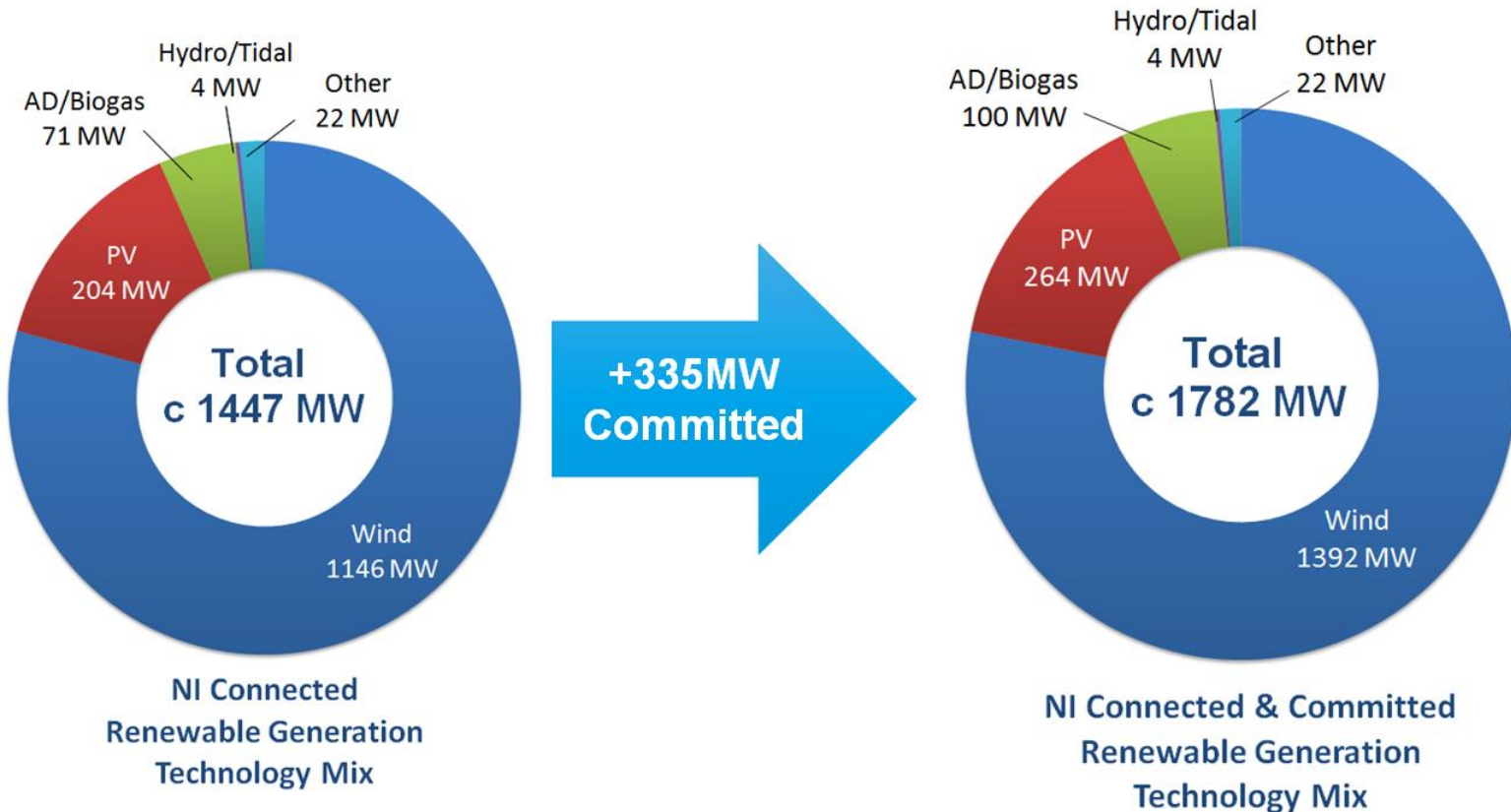
**RGLG**

**9<sup>th</sup> Jan 2018**

# NI Renewable Generation Growth

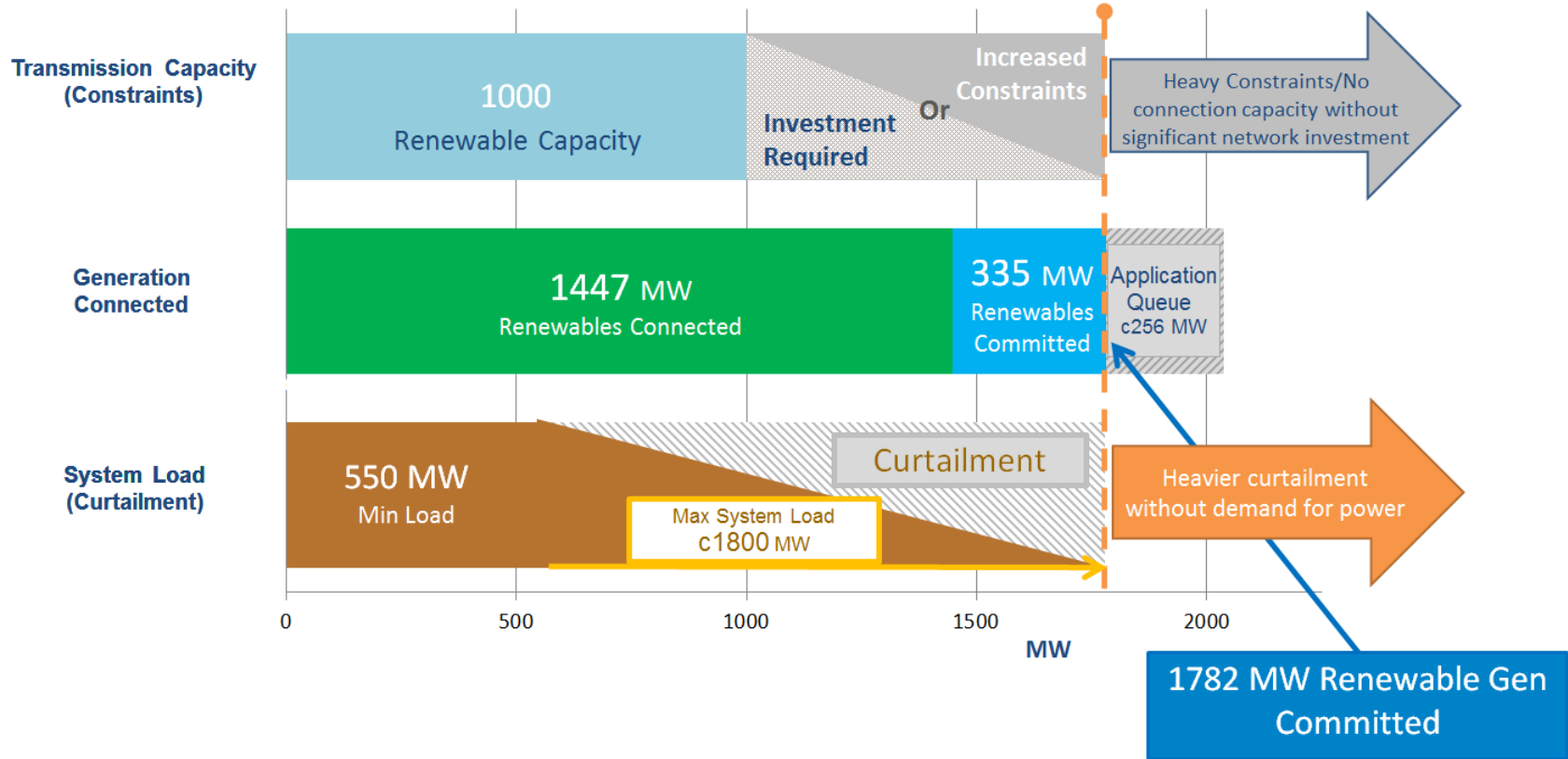


# Connected and Committed Renewable Generation 31 Dec 2017

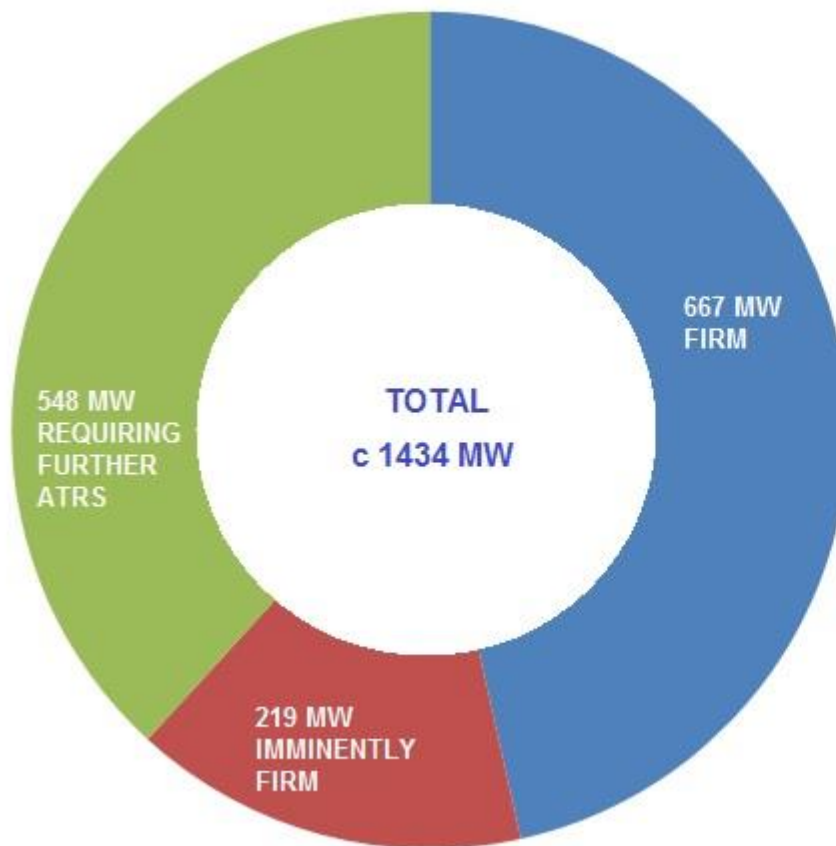




# Renewable Generation Status vs Transmission Capacity NI System Demand



# FAQ status of committed & connected generation



Applies to Generation > 5MW

# ATR Overview

ATR		Project Status
1	THIRD OMAGH - TAMNAMORE 110 kV CIRCUIT	Project nearing completion
2	OMAGH – OMAGH SOUTH 110 kV DOUBLE CIRCUIT UPRATE	Pre-construction
3	VOLTAGE SUPPORT	Pre-construction outline design
4	NEW 400 kV NORTH - SOUTH TIE-LINE	Pre-construction
5	COOLKEERAGH – MAGHERAFELT 275 kV – ASSET REPLACEMENT PROJECT	Pre-construction
6	KELLS – RASHARKIN 2 - NEW 110 kV LINE	Pre-construction outline design
7	BALLYLUMFORD – EDEN 110 kV DOUBLE CIRCUIT EDEN – CARNMONEY 110 kV DOUBLE CIRCUIT CARNMONEY – CASTLEREAGH 110 kV DOUBLE CIRCUIT	Project Definition
8	FURTHER REINFORCEMENT OF THE WESTERN NETWORK	Project Definition

# Generation Consultation Update

**RGLG**

**9<sup>th</sup> Jan 2018**

# Call for Evidence - Summary of Responses

- Planning permission to be a pre-requisite for application
- Milestones as interim measure
- Prioritisation of connections for DS3 System Services
- Respondents keen for further investigation of innovative connection techniques e.g. ANM, DLR, Hybrid etc.
- High levels of support for the Hybrid working group;
  - Requests to ensure it is adequately resourced with relevant powers to change market/technical/commercial etc.

# Consultation Document: Key Items

- Immediate process changes required as a result of:
  - No NIRO deadlines to encourage project progression- may lead to ‘capacity hoarding’
  - No further block extensions/‘system-wide generation queue’
    - Transmission assessment may not be possible within 90 days for all relevant applications
      - Distribution assessment currently starts following T assessment result
    - Offers must be provided to those without planning
- Phase 1 closure report- SONI Transmission assessment report
- Milestones options to prevent ‘capacity hoarding’ in absence of legislation

# Consultation Document: Key Items

- Potential for **DS3** prioritisation in NI
  - Views sought on how this could be introduced for providers
- Potential “Innovative Connections Solutions Working Group”
  - To consider how further generation can be connected in the absence of new network investment
  - Many of the potential capacity solutions proposed have a knock on effect on curtailment, constraints, fault level
  - Working group would investigate commercial and system considerations of a range of issues, for example:
    - Enhanced cluster capability through Active Network Management
    - Dynamic Line Rating