

Retail Market Procedure NI 31

Unmetered Data Processing

31/08/2016

<i>Current Status:</i>	Baseline
<i>Issue Date:</i>	31/08/2016
<i>Version:</i>	3.0

Retail Market Procedure NI 31 – Unmetered Data Processing

Table of Contents

1.	Introduction.....	3
1.1	Scope	3
1.2	History of Changes	3
1.3	Document References.....	3
2.	Procedure Description.....	4
2.1	Unmetered Data Processing	4
2.1.1	Process Flow Diagram	4
2.1.2	Consumption Determination Activities	5

Retail Market Procedure NI 31 – Unmetered Data Processing

1. Introduction

1.1 Scope

This document describes the Retail Market Procedure for calculating unmetered consumption in Northern Ireland.

1.2 History of Changes

Version	Source of Change	Description of Change
0.1	P Merkens	Initial Draft
0.91	P Merkens	Updated following NIE review and ready for SIG Workshop
0.92	P Merkens	Updated following SIG Workshop
0.93	A Ferguson	Final Draft issued for Supplier Review prior to SIG Approval
1.0	A Ferguson	Baseline SIG Approval
2.0	J-E Smith	Baseline CDA Board Approved <ul style="list-style-type: none">• Updated for DR1110/CRID163
2.1	J-E Smith	Updated to reflect MP NI 39 Glossary of Terms
3.0	NIE Networks	Updated to incorporate change of name from NIE to NIE Networks

1.3 Document References

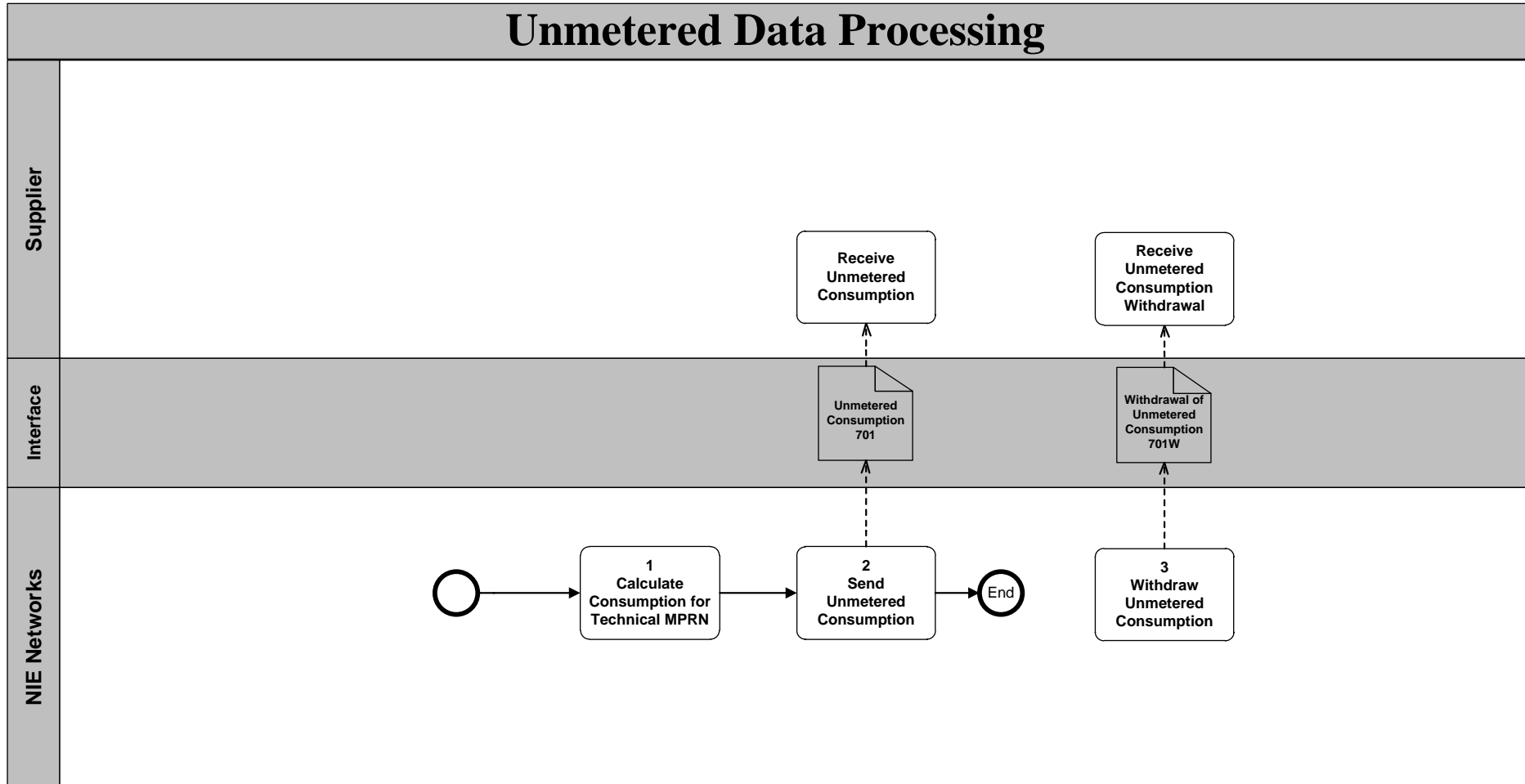
Document Reference	Document name
MP NI 39	NI Market Procedures - Glossary of Terms

Retail Market Procedure NI 31 – Unmetered Data Processing

2. Procedure Description

2.1 Unmetered Data Processing

2.1.1 Process Flow Diagram



Retail Market Procedure NI 31 – Unmetered Data Processing

2.1.2 Consumption Determination Activities

Step	Role	Action	Interface
1	NIE Networks	<p>NIE Networks will calculate consumption for each Technical MPRN to be used in DUoS Billing.</p> <p>The expected consumption for a Technical MPRN for a given period will be calculated as the sum of the expected consumptions for each unmetered item type that has items connected and energised at the Technical MPRN in the period.</p> <p>The expected consumption for the unmetered item type for a given period will be calculated as the product of:</p> <ul style="list-style-type: none"> • the billing value wattage of an individual instance of the item type (circuit wattage will be used where appropriate (e.g. for public lighting); • the burning hours expected within the period according to the applicable burning hours calendar; and • The item count, or repetition factor, for the connected and energised items for the item type. <p>The expected consumption for a billing period, to be used in DUoS Billing for the Technical MPRN, will be the sum of the expected consumptions for each day in the billing period.</p>	
2	NIE Networks	When monthly DUoS Billing occurs, NIE Networks will issue an Unmetered Consumption market message to the Supplier to report the billed consumption at each Technical MPRN.	701 to Supplier
3	NIE Networks	When a reversal of billing occurs where an Unmetered Consumption message 701 has been issued, NIE Networks will issue message a Withdrawal of Unmetered Consumption to the Supplier to report the reversal.	701W to Supplier