
NI Market Message Implementation Guide - Customer Data and Agreements

<i>Document Information</i>	
Business Area:	NIE Networks
Status:	Baseline
Author/s:	
Version Number:	3.0

NI Market Message Implementation Guide – Customer Data and Agreements

<i>Document Updates</i>			
Name	Date	Reason	Version
NIE ES Project	12/12/09	Initial Draft	0.1
NIE ES Project	22/12/09	Updated to remove reference to NHH and HH and replace with Non-Interval and Interval	0.2
NIE ES project	07/01/10	Updated following Project QA	0.3
Paul Merkens	05/04/11	Updated for MCRs	0.4
Paul Merkens	20/04/11	Issued for SIG Review	0.91
Paul Merkens		Update following SIG Review and for CRID 145 and MCRs 1068, 1073 and 1077	0.92
Paul Merkens		Update for MCRs 1079	0.93
J-E Smith		Final Draft Issued for Supplier Review prior to SIG Approval	0.94
A Ferguson		Correction to Change of Usage Code description	0.95
A Ferguson	25/08/11	Baseline Approval	2.1
A Ferguson	20/01/12	Baseline CDA Board Approved Updated for DR1110/CRID163	2.2
J-E Smith	08/03/12	Baseline CDA Board Approved Updated for DR1116/CRID166	2.3

NI Market Message Implementation Guide – Customer Data and Agreements

J-E Smith	21/11/13	Baseline CDA Board Approved Updated for DR1132_CRID177	2.4
NIE Networks	31/08/16	Updated to incorporate change of name from NIE to NIE Networks and align Baseline numbering with NI Retail Market Procedures and Guides	3.0

Table of Contents

1 INTRODUCTION5

1.1 PURPOSE OF THE MESSAGE IMPLEMENTATION GUIDE 5

1.2 VALIDATION 6

1.3 MESSAGE VERSION 6

1.4 NOTES 6

1.5 IMPLEMENTATION OF MARKET CHANGE REQUESTS 7

1.6 OUTSTANDING ISSUES..... 7

1.7 MESSAGE USAGE SUMMARY 7

2 MARKET MESSAGES9

2.1 MESSAGE 013 CUSTOMER DETAILS CHANGE 9

2.2 MESSAGE 014R CUSTOMER DETAILS CHANGE REJECTION 18

2.3 MESSAGE 016 CHANGE OF LEGAL ENTITY 22

2.4 MESSAGE 114 CHANGE OF CUSTOMER DETAILS CONFIRMATION 33

2.5 MESSAGE 116 CHANGE OF LEGAL ENTITY CONFIRMATION 37

2.6 MESSAGE 116A CHANGE OF LEGAL ENTITY TSO CONFIRMATION – INTERVAL METERED SITES 39

2.7 MESSAGE 116N CHANGE OF LEGAL ENTITY NOTIFICATION TO A SUPPLIER WITH A PENDING REGISTRATION 40

2.8 MESSAGE 116R CHANGE OF LEGAL ENTITY REJECTION 43

2.9 MESSAGE 140: CHANGE OF TENANCY HISTORY 46

1 INTRODUCTION

1.1 Purpose of the Message Implementation Guide

This document is a Message Implementation Guide to assist Suppliers in:

- The construction of market messages to be sent to NIE Networks; and
- The interpretation of messages received from NIE Networks.

The Message Implementation Guides are organised into separate **Message Groups** documents based around key business processes. These are:

- Registration, including Change of Supplier
- Customer Data and Agreements
- Data Processing
- Data Aggregation
- DUoS and Transaction Payments
- Meter Works
- Unmetered
- Market Gateway Activity

In addition there is a Common Data Segments Guide which defines the content and structure of a number of frequently used data segments.

This document is the **Customer Data and Agreements** Implementation Guide.

1.2 Validation

The document provides notes on how NIE Networks will validate the messages received. The purpose of these notes is to aid the Supplier in the population of each message and is intended to avoid instances where messages are rejected due to the incorrect population of a message field. The validation described is therefore limited to field specific validations.

Syntax validation is excluded from the validation notes. This is performed by using standard XML Schema validation against the ieXML schema provided that defines the data structures of all market messages in scope. Syntax validation includes:

- Checks that the structure of the message is correct
- Checks that all mandatory fields are provided. Mandatory fields are, however, indicated in the instructions for populations.
- Checks that any data code is selected from the list of data codes issued by NIE Networks.

In cases where the segment on a message fails on any of these reasons, a negative acknowledgement is sent back as a market message to the message sender containing the following information:

- The Transaction Reference Number supplied on the inbound message
- A copy of the message contents as received by NIE Networks
- A description of the error.

General market process validations that are not specific to individual market message fields are excluded.

1.3 Message Version

This Message Guide refers to and is consistent with the Market Messages and Data Codes.

1.4 Notes

This document refers to segment and field levels which should be interpreted as follows:

- The level number indicated against the segment refers to the level of the data items and segments within that segment. Therefore, for example, in message 013 where ‘MPRN Level Information -Level 2’ is stated it is the data items and segments that comprise ‘MPRN Level Information’ that are level 2 items (e.g. MPRN field, Market Participant Business Reference field, Meter Point Address segment). Accordingly, within this document, MPRN Level Information segment is shown as a Level 1 segment.

NI Market Message Implementation Guide – Customer Data and Agreements

- Message Header is a Level 1 segment is a child of Header Level Information.

1.5 Implementation of Market Change Requests

MCR 1009 Removal of Cleansed Address Process

MCR 1028 Multiple CSSN Codes

MCR 1038 Supplier Advice of Long Term Vacant

MCR 1068 New MESN Code – Patient Vital Signs Monitoring

MCR 1073 Long Term Vacant Indicator Flag and Rejection and Confirmation

MCR 1077 Long Term Vacant Indicator on message 114

MCR 1079 Harmonisation Baseline Core Elements - Data Codes

CRID 145 A change of usage is rejected when it is inconsistent with the current meter configuration and not with any pending fieldwork request.

DR1110/CRID163 Updates to ES NI Market Message Implementation Guides and Retail Market Procedures

- Correction to 013 segment for CSSN code deletion
- Correction to 013 Delete Meter Reader Password – change from Mandatory to Optional

DR1116/CRID166 – Updates to Enduring Solution NI Market Documentation

DR1132_CRID177 – Updates to NI Baseline Retail Market Documentation

1.6 Outstanding Issues

None

1.7 Message Usage Summary

The grouping of messages in this guide relate to the communication of changes to customer details between Registered Suppliers and NIE Networks. These can be subdivided into two main types of change:

- The communication and updating of changes to customer details – messages 013, 114 & 014R
- The communication and updating of changes relating to a Change of Legal Entity – messages 016, 116, 116R, 116N & 140

The following table provides a trigger list for each message described in this document, detailing when it is used.

NI Market Message Implementation Guide – Customer Data and Agreements

Message	Title	Sender	Recipient	Trigger	Predecessor
013	Customer Details Change	Supplier	NIE Networks	Supplier receives notification from a customer of a change to their details	None
014R	Customer Details Change Rejection	NIE Networks	Supplier	NIE Networks receives invalid changes to customer details	013 or 016 for invalid changes to usage type
016	Change of Legal Entity	Supplier	NIE Networks	The Customer notifies the Supplier of a Change of Legal Entity at a Meter Point.	None
114	Change of Customer Details Confirmation	NIE Networks	Supplier	NIE Networks makes changes to customer details. Changes can be notified to Suppliers without receiving an incoming 013 / 016. E.g. Meter Point Address and DUoS group changes can be advised without a 013 or 016 predecessor.	013 / 016 or none (See Triggers)
116	Change of Legal Entity Confirmation	NIE Networks	Supplier	NIE Networks accept a request for a Change of Legal Entity from the Supplier.	016
116N	Change of Legal Entity notification to Supplier with a pending registration	NIE Networks	New Supplier	NIE Networks receive a request for a Change of Legal Entity on a Meter Point with a Pending Registration and a Change of supplier is in progress.	016
116R	Change of Legal Entity Rejection	NIE Networks	Supplier	NIE Networks reject a request for a Change of Legal Entity from the Supplier.	016
140	Change of Tenancy History	NIE Networks	Previous Supplier	NIE Networks receive a request for a Change of Legal Entity from the Supplier with the Change of Tenancy History segment populated	016 or 010

2 MARKET MESSAGES

2.1 Message 013 Customer Details Change

Purpose / Description of message

The 013 customer details change message is sent by Market registered Suppliers to the NIE Networks business to notify them of changes to customer details. The following changes can be notified on this message:

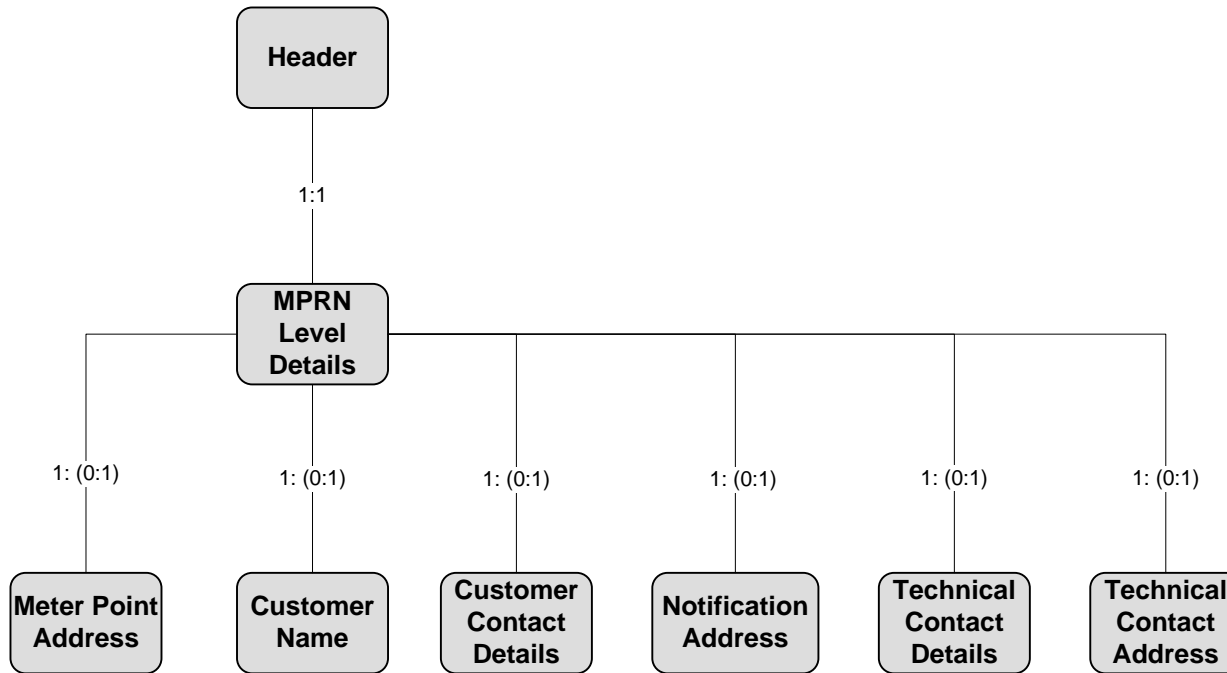
- Requests for changes to Meter point address
- Changes to Customer name
- Changes to Customer contact details
- Creation of or changes to Notification address (Including Creation / Deletion of PO Box address)
- Creation of or changes to Technical contact details and Technical contact address details
- Creation of, changes to or deletion of Medical Equipment Special Needs Details
- Creation of, changes to or deletion of Customer Service Special Needs Details
- Creation of, changes to or deletion of Access Instructions
- Requests for changes to Usage Type
- Notification of changes to Economic Activity Indicator
- Long term vacancy
- Creation of, changes to or deletion of meter reader password

Message 013 is used in the following Market Process:

Process Number and Title	Use of Message
MP NI 24 Changes to Customer Details	To advise a change to customer details

Data hierarchy diagram

013 Message



NI Market Message Implementation Guide – Customer Data and Agreements

Message Structure

This section describes the structure of the 013 message. The purposes of the message segments and data items are explained and any rules for composition outlined.

Segment and Field Level Identifier – 013 Message			Rpt	Optionality	Description / Purpose and composition instructions
1	Message Header		1	Mandatory	<i>Refer to common data segments document</i>
1	Meter Point Details		1	Mandatory	
2	FLD	MPRN	1	Mandatory	The unique identifying reference number for the Meter Point. All elements of MPRN must be provided.
2	SEG	Meter Point Address	1	Optional	<p>The address at which the Meter Point is connected. Suppliers must populate this segment where they wish to advise NIE Networks of changes to Meter Point Address. Changes to this segment are notified by Suppliers by setting the Change Meter Point Address flag to 1 (true) (See below)</p> <p>NIE Networks will retain the right whether to accept or reject changes to MPRN Address.</p> <p>See Common Data Segments for detailed notes on structure and population.</p>
2	SEG	Customer Name	1	Optional	<p>The name of the customer with whom the Supplier has concluded an agreement to supply electricity must be provided.</p> <p>See Common Data Segments for detailed notes on structure and population.</p>
2	SEG	Customer Contact Details	1	Optional	<p>A set of details enabling the customer to be contacted. This segment is mandatory where changes are being made to customer contact details</p> <p>See Common Data Segments for detailed notes on structure and population</p>
2	SEG	Notification Address	1	Optional	<p>An address for correspondence with customers. This segment is mandatory where a notification address is being added or changes are being made to an existing notification address. When providing a new notification address Suppliers must provide either a Street Type Address or a PO Box Type Address but not both.</p> <p>N: B If Suppliers wish to change an existing notification address they must resend the entire address, including any changes they wish to make.</p> <p>See Common Data Segments for detailed notes on structure and population</p>

NI Market Message Implementation Guide – Customer Data and Agreements

Segment and Field Level Identifier – 013 Message			Rpt	Optionality	Description / Purpose and composition instructions
2	FLD	Delete PO Box Address	1	Mandatory	This is a Boolean True / False flag that denotes whether or not a PO Box Address is to be deleted. This flag should only be set to 1, i.e. a logical value of True, where a PO Box Address currently exists and the Supplier wishes to delete it.
2	FLD	Supplier ID	1	Mandatory	The Supplier to whom the Meter Point is registered. A valid Supplier ID registered to the MPRN must be provided.
2	FLD	Access Instructions	1	Optional	Access Instructions is text for standing instructions for data collector access to the metering. This field should always be provided by suppliers where they are adding or making changes to access instructions.
2	FLD	Delete Access instructions	1	Mandatory	This is a Boolean True / False flag that denotes whether or not Access Instructions are to be deleted. This flag should only be set to 1 i.e. a logical value of True where suppliers wish all Access instructions held for a customer to be deleted.
2	FLD	Change of Usage Code	1	Optional	<p>Change of Usage Code is a code provided by the Supplier to indicate a potential change of usage from Residential to Commercial or vice-versa. This code is only provided where Suppliers wish to notify a change. Where used, the Change of Usage Code must be set to either</p> <ul style="list-style-type: none"> • 01 Commercial; or • 02 Residential; or • 03 Combined <p>For Interval Metered sites the Change of Usage will take effect from the message date.</p> <p>For Non-Interval Metered sites the Change of Usage will take effect from (in order of preference):</p> <ul style="list-style-type: none"> • The day after any previous billable reading since last DUoS bill • The day after the last DUoS bill
2	FLD	Economic Activity Indicator (SIC Code)	1	Optional	Economic Activity Indicator is a detailed code indicating the type of activity undertaken by the customer in the premises. This item will be updated by NIE Networks where a valid code is provided. See list of data codes for valid items here.
2	FLD	Contact Name (Technical)	1	Optional	This is the contact name of a person available for contacting for Technical purposes relating to the Meter Point where this is different to the Customer Contact. This field must be provided where Technical contact name details

NI Market Message Implementation Guide – Customer Data and Agreements

Segment and Field Level Identifier – 013 Message			Rpt	Optionality	Description / Purpose and composition instructions	
					are being added or changed for an MPRN.	
2	SEG	Technical Contact Details		1	Optional	This segment refers to the technical contact phone numbers for a technical representative. This segment must be populated where Suppliers are creating new technical contact details for an MPRN or where they are changing existing technical contact details.
	3	FLD	Phone number 1	1	Optional	This is the principal phone number of a Technical contact and if known should be populated by Supplier
	3	FLD	Phone Ext1	1	Optional	This is the principal phone number overflow field for storing number extensions where applicable
	3	FLD	Phone number 2	1	Optional	This field can be used for the secondary phone number where this is required.
	3	FLD	Phone Ext2	1	Optional	This is the secondary phone number overflow field for storing number extensions where applicable.
	3	FLD	Fax	1	Optional	This field is intended to store a Fax telephone number where applicable
	3	FLD	Fax Ext	1	Optional	This field is intended to store a Fax extension telephone number where applicable
	3	FLD	Email	1	Optional	This field is intended to store electronic mail address details where applicable
2	SEG	Street Type Address (Technical)		1	See instructions	Street type address provides details such as Street Name, House no etc. This segment is mandatory where a street type address is being provided or changed as part of Technical Contact details.
	3	FLD	C/O Name	1	Optional	This is the name to which correspondence can be addressed where this is different to the contact name.
	3	FLD	Unit No.	1	Optional	This field can be used to populate information relating to the unit, flat or apartment number that can be part of an address
	3	FLD	Addr Line 1	1	Optional	This field can be used as overflow for address details that apply before the street part of an address.
	3	FLD	Addr Line 2	1	Optional	This field can be used as overflow for address details that apply before the street part of an address.
	3	FLD	House No.	1	Optional	This can be used to populate the number of a premises given as part of an address
	3	FLD	Street	1	Mandatory	This field stores information relating to the street part of an address and must be populated if the segment is provided.
	3	FLD	Addr Line 4	1	Optional	This field can be used as overflow for address details that apply after the street part of an address.

NI Market Message Implementation Guide – Customer Data and Agreements

Segment and Field Level Identifier – 013 Message			Rpt	Optionality	Description / Purpose and composition instructions
3	FLD	Addr Line 5	1	Optional	This field can be used as overflow for address details that apply after the street part of an address.
3	FLD	Postal Code	1	Optional	This is the postal code given as part of address where appropriate
3	FLD	City	1	Optional	Used to populate the details of which City an address resides in where appropriate
3	FLD	County – Ireland	1	Optional	A field denoting the county in Ireland in which an address resides. See the list of data codes for permissible values here. If the Technical Street Type Address is in Ireland this item must be populated.
3	FLD	County / State	1	Optional	This denotes the county in which an address is situated. This is a free text 40 character field for use in non – Irish Addresses.
3	FLD	Country	1	Optional	A field that makes up part of an address denoting in which country the address resides. This item must be provided where a Technical Street Type Address is provided. See list of data codes for valid entries here.
2	FLD	Medical Equipment Special Needs Details	1	Optional	<p>A code indicating the type of medical equipment special needs that a customer has. This item must be provided by Suppliers where they are adding or changing these details. The allowed values to be used by Suppliers are as follows:</p> <ul style="list-style-type: none"> • CL – Electric Chair Lift • EH – Electric Hoist • EM – Electric Mattress/Bed • FR – Vital Medicine Requiring Refrigeration • HD – Home Dialysis • MS – Multiple Sclerosis • NB – Nebuliser • NP – Peg Tube Feeding Pump • OC – Oxygen Concentrator • PN – Total Parental Nutrition Machine • PV - Patient Vital Signs Monitoring • SL – Electric Pressure Stair Lift • SP – Suction Pump • VT – Ventilator
2	FLD	Delete Medical Equipment Special Needs Details	1	Mandatory	This is a Boolean True / False flag indicating whether or not medical equipment special needs details are to be deleted. This flag should only be set to 1 i.e. a logical value of True where Suppliers wish the value provided

NI Market Message Implementation Guide – Customer Data and Agreements

Segment and Field Level Identifier – 013 Message			Rpt	Optionality	Description / Purpose and composition instructions
					in Medical Equipment Special Needs Details above to be deleted
2	FLD	Display on Extranet	1	Optional	Not used in NI
2	SEG	Special Needs Delete Details	0:N	Optional	An instance of this segment is provided for each applicable Customer Service Special Needs code
3	FLD	Customer Service Details Code	1	Mandatory	<p>A code indicating the type of special requirement that a customer has. This item must be provided by Suppliers where they are adding or changing these details and should be a complete list of the Special Needs now applicable. The allowed values to be used by Suppliers are as follows:</p> <ul style="list-style-type: none"> • 0001 – Visually Impaired • 0002 – Speech Impaired • 0003 – Hearing Impaired • 0004 – Elderly • 0005 – Language Difficulty • 0006 – Learning Difficulty • 0007 – Mobility Impaired • 0008- Dexterity Impaired
3	FLD	Delete Customer Service Details Flag	1	Mandatory	This is a Boolean True / False flag indicating whether or not Customer Service Special needs details are to be deleted. This flag should only be set to 1 i.e. a logical value of True where Suppliers wish the corresponding Customer Service Special Needs Details value held by NIE Networks to be deleted
2	FLD	Market Participant Business Reference	1	Mandatory	This is the Suppliers number given as reference in the request. This will be used in future contact with Suppliers to reference the request where necessary.
2	FLD	Change Meter Point Address	1	Mandatory	This is a Boolean True / False flag to denote whether or not changes are requested to be made to Meter Point Address details. 1 relates to a logical value of True while 0 relates to logical false
2	FLD	Meter Reader Password	1	Optional	The password that a meter reader will provide if requested by a customer when visiting a site to collect meter readings.
2	FLD	Delete Meter Reader Password	1	Optional	This is a Boolean True / False flag indicating whether or not meter reader password details are to be deleted. This flag should only be set to 1 i.e. a logical value of True where Suppliers wish these details to be deleted.
2	FLD	Long Term Vacant Indicator Flag	1	Optional	This is a Boolean True / False flag indicating whether or not a site is long-term vacant. This flag should only be set to "1" i.e. a logical value of True where Suppliers wish to advise that a site is Long-Term Vacant.

NI Market Message Implementation Guide – Customer Data and Agreements

NIE Networks will undertake the following validation of the message at segment and field level.

Segment and Field Level Identifier – 013 Message			Validation	
1	Message Header		See common data segments document.	
1	Meter Point Details			
2	FLD	MPRN	The MPRN must be valid and be registered to the Supplier ID provided on the message (See Supplier ID).	
2	SEG	Meter Point Address	NIE Networks will review MPRN Address changes before accepting or rejecting the requested changes. If segment is not provided and ‘Change Meter Point Address’ is true, message will fail validation. (See Common Data segments for detail)	
2	SEG	Customer Name	If an invalid combination of fields received message will fail validation. (See Common Data segments for detail)	
2	SEG	Customer Contact Details	(See Common Data segments for detail)	
2	SEG	Notification Address	(See Common Data segments for detail)	
2	FLD	Delete PO Box Address	Message will fail validation where this item is omitted. Where this field is set to 1 = True the entire PO Box address held by NIE Networks will be deleted.	
2	FLD	Supplier ID	The Supplier ID must be a valid ID that identifies the Supplier as the registered Supplier for that Meter Point. A 014R is generated if Supplier is not registered to the MPRN.	
2	FLD	Access Instructions	Where additions or changes to this data are requested on this message these are out sorted for manual checking by NIE Networks Personnel.	
2	FLD	Delete Access instructions	Message will fail validation if this item is omitted. Where this Flag is set to 1 the workflow is out sorted and the Access Instructions to be deleted are reviewed by NIE Networks Personnel. Flag should be set to 0 (False) in all other instances.	
2	FLD	Change of Usage Code	NIE Networks will validate that the value is valid and that it complies with the current meter configuration	
2	FLD	Economic Activity Indicator	Message will fail validation if this item does not match one of allowed values where provided on message.	
2	FLD	Contact Name	No individual validation of this field.	
2	SEG	Technical Contact Details	No individual validation of this segment.	
	3	FLD	Phone number 1	No individual validation of this field.
	3	FLD	Phone Ext1	No individual validation of this field.
	3	FLD	Phone number 2	No individual validation of this field.
	3	FLD	Phone Ext2	No individual validation of this field.
	3	FLD	Fax	No individual validation of this field.
	3	FLD	Fax Ext	No individual validation of this field.
	3	FLD	Email	No individual validation of this field.
2	SEG	Street Type Address (Technical)	No individual validation at segment level.	
	3	FLD	C/O Name	No individual validation of this field.

NI Market Message Implementation Guide – Customer Data and Agreements

Segment and Field Level Identifier – 013 Message			Validation
3	FLD	Unit No.	No individual validation of this field.
3	FLD	Addr Line 1	No individual validation of this field.
3	FLD	Addr Line 2	No individual validation of this field.
3	FLD	House No.	No individual validation of this field.
3	FLD	Street	Message will fail validation if segment is provided and this field is left blank.
3	FLD	Addr Line 4	No individual validation of this field.
3	FLD	Addr Line 5	No individual validation of this field.
3	FLD	Postal Code	No individual validation of this field.
3	FLD	City	No individual validation of this field.
3	FLD	County - Ireland	Message will fail validation if item does not match one of allowed code values
3	FLD	County / State	No individual validation of this field.
3	FLD	Country	Message will fail validation if item omitted or does not match one of allowed code values where segment provided.
2	FLD	Medical Equipment Special Needs Details	Message will fail validation if item does not match one of the valid codes where provided
2	FLD	Delete Medical Equipment Special Needs Details	Message will fail validation if this item is not populated. Where true, the value to be deleted should also be provided in the Medical Equipment Special Needs Details field above.. Flag should be set to 0 (False) in all other instances.
2	SEG	Customer Service Special Needs Details	
3	FLD	Customer Service Special Need Code	The message will fail validation if item does not match one of the valid codes where provided
2	FLD	Delete Customer Service Special Needs Details	Message will fail validation if this item is not populated. Where true, all Customer Service Special Needs will be deleted
2	FLD	Market Participant Business Reference	Message will fail validation if this item is omitted.
2	FLD	Change Meter Point Address	Message will fail validation if this item is omitted. Where this item is set to 1 i.e. a logical value of True the request is marked to be manually out sorted and checked by a NIE Networks Customer Service Operative.
2	FLD	Meter Reader Password	No individual validation of this field.
2	FLD	Delete Meter Reader Password	Message will fail validation if this item is omitted. Where this Flag is set to 1 the meter reader password will be deleted. The flag should be set to 0 (False) in all other instances
2	FLD	Long Term Vacant Indicator Flag	Where this flag is set to 1 the message will fail validation if the previous two meter reader observations do not confirm that the site is vacant or a meter reading has been obtained since the first such observation.

2.2 Message 014R Customer Details Change Rejection

Purpose / Description of message

The 014R Customer details change rejection message is sent by the NIE Networks business to Market registered Supplier in the following circumstances:

- To reject 013 messages received with invalid MPRN's
- To reject 013 messages received where the Supplier ID provided is not the registered Supplier for the MPRN
- To reject changes to customer details notified to them on a 013 / 016. Changes to customer details that can be rejected include the following categories:
 - Proposed changes to Meter point address sent on a 013
 - Proposed changes to customer details and / or Usage Type sent on a 013
 - Proposed changes to customer details and / or Usage Type sent on a 016

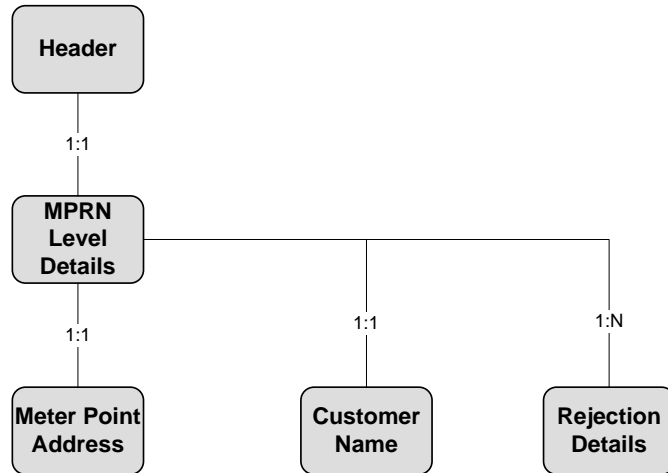
Message 014R is used in the following Market Process:

Process Number and Title	Use of Message
MP NI 24 Changes to Customer Details	To reject a change to customer details
MP NI 25 Change of Legal Entity	To reject a change of usage type

NI Market Message Implementation Guide – Customer Data and Agreements

Data Hierarchy Diagram

014R Message



NI Market Message Implementation Guide – Customer Data and Agreements

Message Structure

This section describes the structure of the 014R message. The purpose of the message segments and data items is explained and any rules for composition outlined.

Segment and Field Level Identifier – 014R Message			Rpt	Optionality	Description / Purpose and composition instructions
1	Message Header		1	Mandatory	Refer to common data segments document
1	Meter Point Details		1	Mandatory	
2	FLD	MPRN	1	Mandatory	The unique identifying reference number for the Meter Point to be registered. All elements of MPRN will be provided.
2	SEG	Meter Point Address	1	See instructions	The address at which the Meter Point is connected. This is populated with the address as held in NIE Networks Systems. This segment is always populated on this message with the exception of the following scenario: <ul style="list-style-type: none"> If message 013 is rejected for reason of invalid MPRN this segment is provided but with no field data See Common Data Segments for detailed notes on structure and population.
2	SEG	Customer Name	1	See instructions	The customer with whom the Supplier has concluded an agreement to supply electricity. NIE Networks will populate this segment with the customer name details as held on NIE Networks systems. This segment is always populated on this message with the exception of the following scenario: <ul style="list-style-type: none"> If message 013 is rejected for reason of invalid MPRN or Supplier Not Registered this segment is provided but with no field data. See Common Data Segments for detailed notes on structure and population.
2	FLD	Supplier ID	1	Mandatory	This will be the supplier ID held by NIE Networks as registered to the MPRN. If message 013 is rejected for reason of Supplier Not Registered this will differ from the Supplier ID provided on the original message 013.
2	FLD	Market Participant Business Reference	1	Mandatory	This is the Suppliers reference originally provided on message 013 or 016. This is provided to allow Suppliers to track which original request is being rejected.
2	SEG	Rejection Details	1..N	Mandatory	This segment contains one reject reason. The Segment is repeated for each reject reason on the message.
3	FLD	Reject Reason	1	Mandatory	Reject Reason is a code to identify why data was rejected. The valid reject reasons for this message are as follows:

NI Market Message Implementation Guide – Customer Data and Agreements

Segment and Field Level Identifier – 014R Message			Rpt	Optionality	Description / Purpose and composition instructions	
					ICD	Invalid change of Meter point address
					ICU	Invalid Change of Customer Usage
					IID	Invalid / incomplete data
					IMP	Invalid MPRN
					IVS	Invalid Vacant Sequence
					SNR	Supplier Not registered to MPRN

2.3 Message 016 Change of Legal Entity

Purpose / Description of message

The 016 Change of Legal Entity message is sent by Market registered Suppliers to the NIE Networks business to notify them of a Change of Legal Entity at a metered location to which they are the registered Supplier. This includes the following:

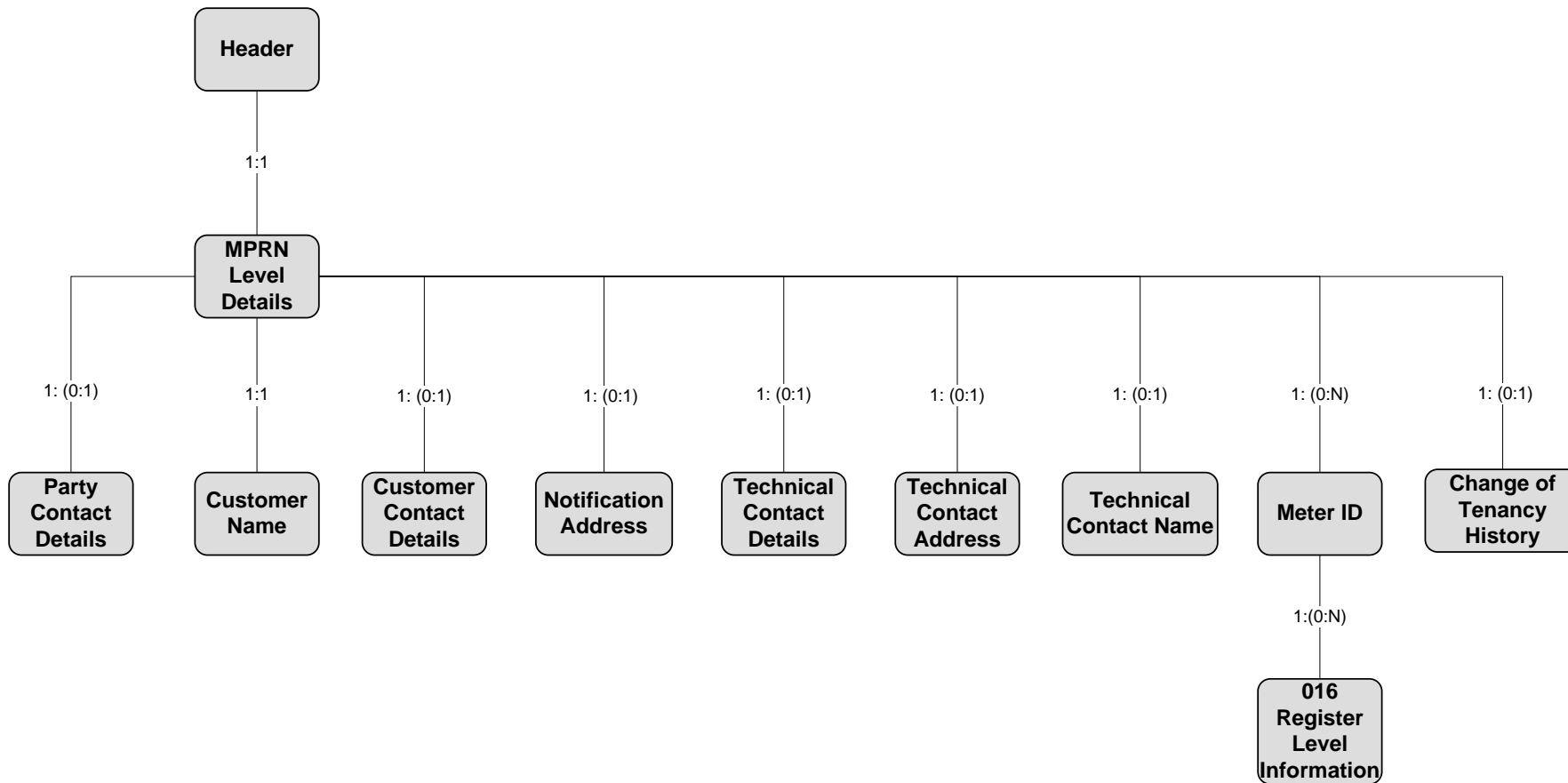
- Notification that the new Customer moving into the property has an agreement for Supply with the Supplier
- Notification of the new Customers name and contact details (Including Notification Address where applicable)
- Notification of any Medical Equipment or Customer Service Special Needs that the Customer may have.
- Notification of a set of Start Readings for the new Customer at the Meter Point where applicable.

Message 016 is used in the following Market Process:

Process Number and Title	Use of Message
MP NI 25 Change of Legal Entity	To advise a change of legal entity

Data Hierarchy Diagram

016 Message



NI Market Message Implementation Guide – Customer Data and Agreements

Message Structure

This section describes the structure of the 016 message. The purposes of the message segments and data items are explained and any rules for composition outlined.

Segment and Field Level Identifier – 016 Message			Rpt	Optionality	Description / Purpose and composition instructions
1	Message Header		1	Mandatory	<i>Refer to common data segments document</i>
1	Meter Point Details		1	Mandatory	
2	FLD	MPRN	1	Mandatory	The unique identifying reference number for the Meter Point that the customer is taking over. All elements of MPRN must be provided. MPRN must be valid for Supplier at relevant date.
2	SEG	Customer Name	1	Mandatory	The customer with whom the Supplier has concluded an agreement to supply electricity. This segment is mandatory on this message so as to notify NIE Networks of the customer's name details for the meter point. Either the name of an organisation or the name of an individual should be provided (i.e. either Name_Org1 or First Name and Last Name) but not both. See Common Data Segments for detailed notes on structure and population.
2	SEG	Customer Contact Details	1	Optional	A set of details enabling the customer to be contacted. This segment is mandatory where these details are known to the Supplier requesting the Change of Legal Entity. See Common Data Segments for detailed notes on structure and population.
2	SEG	Notification Address	1	Optional	An address for correspondence with customers. The notification address segment should only be provided if the Meter Point Address is not the address for correspondence with the customer. When providing a notification address Suppliers must provide either a Street Type Address or a PO Box Type Address but not both. See Common Data Segments for detailed notes on structure and population.
2	FLD	Supplier ID	1	Mandatory	The Supplier to whom the Meter Point is registered.
2	FLD	Change of Usage Code	1	Optional	Change of Usage Code is a code provided by the Supplier to indicate a potential change of usage from Residential to Commercial or vice-versa. This code is only provided where Suppliers wish to notify a change. Where used, the Change of Usage Code must be set to either

NI Market Message Implementation Guide – Customer Data and Agreements

Segment and Field Level Identifier – 016 Message			Rpt	Optionality	Description / Purpose and composition instructions
					<ul style="list-style-type: none"> • 01 Commercial; or • 02 Residential; or • 03 Combined <p>The Change of Usage will take effect from the required date for interval meters.</p> <p>For Non-Interval metered sites the Change of Usage will take effect from (in order of preference):</p> <ul style="list-style-type: none"> • the required date where valid readings are provided • The day after any previous billable reading since last DUoS bill • The day after the last DUoS bill <p>A Change of Usage cannot take effect from a future date</p>
2	FLD	Economic Activity Indicator	1	Optional	Economic Activity Indicator is a code indicating the type of activity undertaken by the customer in the premises. This item is only required where Suppliers are notifying changes to this code as part of the Change of Legal Entity. See list of data codes for valid list of codes for this item.
2	FLD	Contact Name	1	Optional	This is the name of a person available for contacting for technical purposes. This field must be populated where Suppliers are creating new technical contact details for a Meter Point at a Change of Legal Entity
2	SEG	Technical Contact Details	1	Optional	This segment refers to the technical contact phone numbers for a technical representative. This segment must be populated where Suppliers are creating new technical contact details for an MPRN at a Change of Legal Entity.
2	FLD	Company Authorised Officer		See Instructions	<p>This is a person authorised by a company to sign connection agreements. This item must be sent if the message includes a Change of Legal Entity and involves a company / organisation moving into the premises and it is known by the Supplier.</p> <p>Not Used in Northern Ireland.</p>
3	FLD	Phone number 1	1	Optional	This is the principal phone number of a technical contact and must be populated if known by Supplier.
3	FLD	Phone Ext1	1	Optional	This is the principal phone number overflow field for storing number extensions where applicable
3	FLD	Phone number 2	1	Optional	This field can be used for the secondary phone number where this is required.
3	FLD	Phone Ext2	1	Optional	This is the secondary phone number overflow field for storing number extensions where applicable.

NI Market Message Implementation Guide – Customer Data and Agreements

Segment and Field Level Identifier – 016 Message			Rpt	Optionality	Description / Purpose and composition instructions
3	FLD	Fax	1	Optional	This field is intended to store a Fax telephone number where applicable
3	FLD	Fax Ext	1	Optional	This field is intended to store a Fax extension telephone number where applicable
3	FLD	Email	1	Optional	This field is intended to store electronic mail address details where applicable
2	SEG	Street Type Address (Technical)	1	Optional	Street type address provides details such as Street Name, House no etc. This segment is mandatory where a street type address is being provided as part of Technical Contact details.
3	FLD	C/O Name	1	Optional	This is the name to which correspondence can be addressed where this is different to the contact name.
3	FLD	Unit No.	1	Optional	This field can be used to populate information relating to the unit, flat or apartment number that can be part of an address
3	FLD	Addr Line 1	1	Optional	This field can be used as overflow for address details that apply before the street part of an address.
3	FLD	Addr Line 2	1	Optional	This field can be used as overflow for address details that apply before the street part of an address.
3	FLD	House No.	1	Optional	This can be used to populate the number of a premises given as part of an address
3	FLD	Street	1	Mandatory	This field stores information relating to the street part of an address and must be populated where the segment is provided.
3	FLD	Addr Line 4	1	Optional	This field can be used as overflow for address details that apply after the street part of an address.
3	FLD	Addr Line 5	1	Optional	This field can be used as overflow for address details that apply after the street part of an address.
3	FLD	Postal Code	1	Optional	This is the postal or Zip code given as part of address where appropriate
3	FLD	City	1	Optional	Used to populate the details of which City an address resides in where appropriate
3	FLD	County - Ireland	1	Optional	A field denoting the county in Ireland in which an address resides. See the list of data codes for permissible values here. This field must be provided if the Technical Contact Address is in Ireland.
3	FLD	County / State	1	Optional	This denotes the county in which an address is situated. This is an optional field used where the Technical Contact address is not in Ireland, where required.
3	FLD	Country	1	Optional	A field that makes up part of an address denoting in which country the address resides. This field must be populated if a Technical Address is provided. See the list of data codes for permissible values here.

NI Market Message Implementation Guide – Customer Data and Agreements

Segment and Field Level Identifier – 016 Message			Rpt	Optionality	Description / Purpose and composition instructions
2	FLD	Medical Equipment Special Needs Details	1	Optional	<p>A code indicating the type of medical equipment special needs that a customer has. This item must be provided by Suppliers where they are applicable to the new Tenant/Legal Entity. Any previous information held will be replaced by that provided on the 016 message. Where no information is provided any original information will be deleted. The allowed values to be used by Suppliers are as follows:</p> <ul style="list-style-type: none"> • CL – Electric Chair Lift • EH – Electric Hoist • EM – Electric Mattress/Bed • FR – Vital Medicine Requiring Refrigeration • HD – Home Dialysis • MS – Multiple Sclerosis • NB – Nebuliser • NP – Peg Tube Feeding Pump • OC – Oxygen Concentrator • PN – Total Parental Nutrition Machine • PV - Patient Vital Signs Monitoring • SL – Electric Pressure Stair Lift • SP – Suction Pump • VT – Ventilator
2	FLD	Display on Extranet	1	Optional	Not Used in NI
2	SEG	Customer Service Special Needs	0:N	Optional	An instance of this segment is provided for each applicable Customer Service Special Needs code
3	FLD	Customer Service Special Need Code	1	Mandatory	<p>A code indicating the type of special requirement that a customer has. This item must be provided by Suppliers where they are adding or changing these details. The allowed values to be used by Suppliers are as follows:</p> <ul style="list-style-type: none"> • 0001 – Visually Impaired • 0002 – Speech Impaired • 0003 – Hearing Impaired • 0004 – Elderly • 0005 – Language Difficulty • 0006 – Learning Difficulty • 0007 – Mobility Impaired • 0008- Dexterity Impaired

NI Market Message Implementation Guide – Customer Data and Agreements

Segment and Field Level Identifier – 016 Message				Rpt	Optionality	Description / Purpose and composition instructions
2	SEG	Party Contact Details		1	Optional	This segment allows Suppliers to forward their Contact Details in case of queries with the Change of Legal Entity request. See Common Data Segments for detailed notes on structure and population.
2	FLD	Supply Agreement Flag		1	Mandatory	Supply Agreement is a Boolean True / False flag that denotes the existence of a supply agreement with a customer. This flag should always be set to 1 i.e. a logical value of True on this message.
2	FLD	Required Date		1	Optional	Required Date is the date on which the Change of Legal Entity is required to become effective. This date is considered to be the date of the new tenant move-in – the reading, if provided, is considered to be a move-out reading and is dated on the day before. The required date may be future dated. The required date may not pre-date last DUoS bill. If no date is provided the message receipt date will be used as date for Change of Legal Entity and readings will be ignored.
2	FLD	Read Reason		1	Optional	This is the reason for provision of the read. This should always be set to the following value : <ul style="list-style-type: none"> • 27 – Change of Legal Entity where provided.
2	SEG	Meter ID (Meter level information)		0..N	Optional	This is the segment that holds information relating to the meters held at a Meter point and is only required to be provided where Suppliers are including Meter Readings at Change of Legal Entity.
	3	FLD	Meter Category	1	Optional	Not used in Northern Ireland.
	3	FLD	Serial Number	1	Optional	The physical number found on a meter. The complete Serial Number must be provided. The serial number can be obtained either: <ul style="list-style-type: none"> • From the meter itself • From information published by NIE Networks
	3	SEG	Register Level Information	0..N	Optional	Where customer readings are to be provided then a reading should be provided for every consumption register together with sufficient information to identify the appropriate register.
	4	FLD	Meter Register Sequence	1	Optional	An identifier to distinguish between different meter dials on a physical meter or set of meters.

NI Market Message Implementation Guide – Customer Data and Agreements

Segment and Field Level Identifier – 016 Message			Rpt	Optionality	Description / Purpose and composition instructions
					The Meter Register Sequence must be provided if there are multiple registers with the same timeslot. Meter Register Sequence may be obtained from information published by NIE Networks.
	4	FLD	Timeslot	1	Optional A code that indicates the period that a meter is recording electricity consumption. The Timeslot must be provided in Northern Ireland
	4	FLD	Reading	1	Mandatory This should be the reading recorded on the Read Date on the meter register identified by the Serial Number, Meter Register Sequence and Timeslot data provided.
	4	FLD	Read Type	1	Mandatory Read Type should be set to the following on this message: SC Supplier Provided Customer Reading
	4	FLD	Register Type	1	Optional Register Type is a code to indicate the purpose of the register. Refer to the Data Codes published by NIE Networks for a complete list of codes.
2	FLD	Market Participant Business Reference		1	Mandatory This is the Suppliers number given as reference in the request. This will be used in future contact with Suppliers to reference the request where necessary.
2	SEG	Change of Tenancy History		1:1	Optional Data provided about the previous supplier, address and premise identifier for the customer Message 140 will be sent to the Previous Supplier where this segment is provided
	3	FLD	Previous Supplier	1	Mandatory The code identifying the previous Supplier of the customer
	3	FLD	Previous Account Number	1	Optional The customer account number that the customer has with the previous Supplier
	3	FLD	Previous MPRN	1	Optional The MPRN of the site at which the customer was supplied by the previous Supplier
	3	FLD	Previous Address	1	Optional The address at which the customer was supplied by the previous Supplier.
2	FLD	Meter Reader Password		1	Optional The password that a meter reader will provide if requested by a customer when visiting a site to collect meter readings.

NI Market Message Implementation Guide – Customer Data and Agreements

NIE Networks will undertake the following validation of the message at segment and field level.

Segment and Field Level Identifier – 016 Message			Validation
1	Message Header		<i>Refer to common data segments document</i>
1	Meter Point Details		
2	FLD	MPRN	The MPRN must exist and not be in an assigned state and not be terminated. The MPRN must be registered to that Supplier (See Supplier ID).
2	SEG	Customer Name	This segment must be provided on message 016. See Common Data Segments
2	SEG	Notification Address	See Common Data Segments
2	FLD	Supplier ID	The Supplier ID must be a valid ID that identifies the Supplier as the registered Supplier for that Meter Point. A 116R is generated if Supplier is not valid or if the Supplier is not registered to the MPRN.
2	FLD	Change of Usage Code	NIE Networks will validate that the value is valid and that it complies with the current meter configuration
2	FLD	Economic Activity Indicator	If this field is provided the message will fail validation if the value does not match one of the allowed values. See valid list of data codes for valid entries.
2	FLD	Contact Name	No individual validation of this field.
2	SEG	Technical Contact Details	No individual validation of this segment.
2	FLD	Company Authorised Officer	No individual validation of this field.
3	FLD	Phone number 1	No individual validation of this field.
3	FLD	Phone Ext1	No individual validation of this field.
3	FLD	Phone number 2	No individual validation of this field.
3	FLD	Phone Ext2	No individual validation of this field.
3	FLD	Email	No individual validation of this field.
3	FLD	Fax	No individual validation of this field.
3	FLD	Fax Ext	No individual validation of this field.
2	SEG	Street Type Address (Technical)	No individual validation at segment level.
3	FLD	C/O Name	No individual validation of this field.
3	FLD	Unit No.	No individual validation of this field.
3	FLD	Addr Line 1	No individual validation of this field.
3	FLD	Addr Line 2	No individual validation of this field.
3	FLD	House No.	No individual validation of this field.
3	FLD	Street	No individual validation of this field.

NI Market Message Implementation Guide – Customer Data and Agreements

Segment and Field Level Identifier – 016 Message			Validation
3	FLD	Addr Line 4	No individual validation of this field.
3	FLD	Addr Line 5	No individual validation of this field.
3	FLD	Postal Code	No individual validation of this field.
3	FLD	City	No individual validation of this field.
3	FLD	County - Ireland	This item must match one of the allowed code values where this item is populated. See Data codes for allowed list of Irish Counties.
3	FLD	County / State	No individual validation of this field.
3	FLD	Country	Message will fail validation if this item is omitted or does not match one of the valid codes where the segment is provided.
2	FLD	Medical Equipment Special Needs Details	The message will fail validation if item does not match one of the valid codes where provided
2	SEG	Customer Service Special Needs Details	
3	FLD	Customer Service Special Need Code	The message will fail validation if item does not match one of the valid codes where provided
2	SEG	Party Contact Details	No individual validation of this segment.
2	FLD	Supply Agreement Flag	Message will fail validation if this item is not populated.
2	FLD	Required Date	Where a future date is populated here NIE Networks will not process the Change of Legal Entity until the required date is reached. For Non-Interval Metering where a retrospective required date has been provided and DUoS billing has occurred between current and required date, the required date is ignored and the current date is used. The required date will be ignored for a change of usage if it is in the future or if it pre-dates the last DUoS bill.
2	FLD	Read Reason	Message will fail validation if the read reason is not set to 27 - COLE
2	SEG	Meter ID (Meter level information)	Meter ID is checked to see if it is valid for the MPRN provided – if validation fails reading information provided on the message is ignored. The message is not rejected and the Change of Legal Entity is still processed.
3	FLD	Meter Category	No individual validation of this field.
3	FLD	Serial Number	NIE Networks will match the Serial Number to the Serial Number(s) recorded for the Meter Point by NIE Networks and if a unique match cannot be found the readings will be rejected.
3	SEG	Register Level Information	Cardinality of this segment is 0..N – so no instance need be provided. This segment only need be provided where the Supplier is providing a reading.
4	FLD	Meter Register Sequence	If provided, NIE Networks will match the Meter Register Sequence to the Meter Register Sequence (s)

NI Market Message Implementation Guide – Customer Data and Agreements

Segment and Field Level Identifier – 016 Message				Validation
				recorded for the Meter Point by NIE Networks.
	4	FLD	Timeslot	NIE Networks will match the Timeslot to the Timeslot (s) recorded for the Meter Point and Meter Serial Number matched above. If a unique match cannot be found the readings will be rejected.
	4	FLD	Reading	Provided the readings are not rejected, NIE Networks will validate the readings according to the rules specified in MP NI 14
	4	FLD	Read Type	Must correspond to given data codes. No other validation of this field.
	4	FLD	Register Type	If provided and NIE Networks cannot otherwise match readings to a register, NIE Networks will match the Register Type to the Register Type (s) recorded for the Meter Point and Meter Serial Number matched above. If a unique match cannot be found the readings will be rejected
2	FLD	Market Participant Business Reference		Message will fail validation where this field is not populated.
2	SEG	Change of Tenancy History		If the Change of Tenant flag is set to True, data may be provided about the previous supplier, address and premise identifier for the customer (to be passed to the previous supplier of the customer)
	3	FLD	Previous Supplier	Must be a valid Supplier ID
	3	FLD	Previous Account Number	Not validated by NIE Networks
	3	FLD	Previous MPRN	Not validated by NIE Networks
	3	FLD	Previous Address	Not validated by NIE Networks
2	FLD	Meter Reader Password		Not validated by NIE Networks

2.4 Message 114 Change of Customer Details Confirmation

Purpose / Description of message

The 114 Change of customer details confirmation message is sent by NIE Networks to the market registered supplier.

The 114 advises of the following changes:

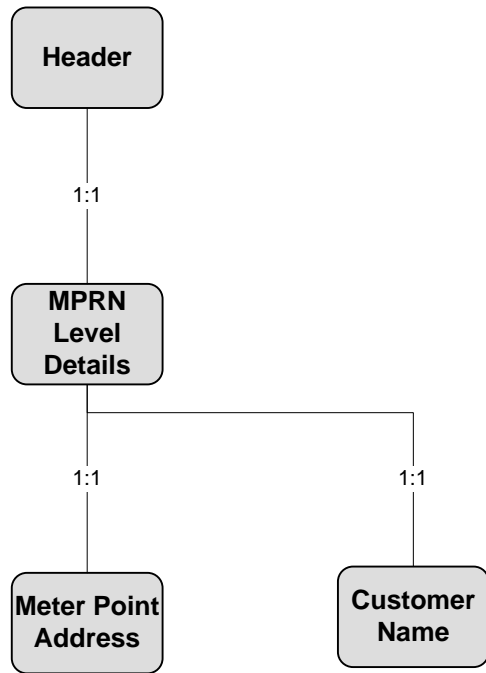
- To advise of changes to Meter point address
- To confirm changes to Meter point address requested by a Supplier on message 013.
- To confirm that NIE Networks has made changes to customer details that were notified by the registered Supplier on message 013
- To advise of DUoS Group changes
- To confirm that NIE Networks has made changes to DUoS Group indicated by Supplier on message 013 / 016 as a change to usage type

Message 114 is used in the following Market Process:

Process Number and Title	Use of Message
MP NI 24 Changes to Customer Details	To confirm a change to customer details
MP NI 25 Change of Legal Entity	To confirm a change of usage type

Data hierarchy diagram

114 Message



NI Market Message Implementation Guide – Customer Data and Agreements

Message Structure

This section describes the structure of the 114 message. The purpose of the message segments and data items is explained and any rules for composition outlined.

Segment and Field Level Identifier –114 Message			Rpt	Optionality	Description / Purpose and composition instructions
1	Message Header		1	Mandatory	Refer to common data segments document
1	Meter Point Details		1	Mandatory	
2	FLD	MPRN	1	Mandatory	The unique identifying reference number for the Meter Point to be registered. All elements of MPRN will be provided.
2	SEG	Meter Point Address	1	Mandatory	The address at which the Meter Point is connected. NIE Networks will populate this segment with the details of the Meter Point Address held in NIE Networks Systems. This will include any changes where changes to Meter Point Address have been denoted (See Meter Point Address Changed – Flag) See Common Data Segments for detailed notes on structure and population.
2	SEG	Customer Name	1	Mandatory	The customer with whom the Supplier has concluded an agreement to supply electricity. NIE Networks will populate this segment with the Customer Name details held on NIE Networks Systems, and will reflect any changes requested on message 013. See Common Data Segments for detailed notes on structure and population.
2	FLD	Supplier ID	1	Mandatory	The Supplier to whom the Meter Point is registered.
2	FLD	Change of Usage Flag	1	Mandatory	Change of Usage Flag is a Boolean True / False flag to indicate whether or not a change of usage from Residential to Commercial or visa versa has been carried out by NIE Networks. Where this has been carried out the flag will be set to 1 i.e. a logical value of True.
2	FLD	Meter Point Address Changed	1	Mandatory	This is a Boolean True / False flag to denote whether or not the Meter Point address has been changed. The flag is set to 1 i.e. a logical value of True where this has been changed.
2	FLD	Customer Details Changed	1	Mandatory	This is a Boolean True / False flag to denote whether or not Customer details have been changed as notified by message 013. This includes Customer Service Special Needs and Medical Equipment Special Needs Details where appropriate. The flag is set to 1 i.e. a logical value of True only where Customer Details have been changed.

NI Market Message Implementation Guide – Customer Data and Agreements

Segment and Field Level Identifier –114 Message			Rpt	Optionality	Description / Purpose and composition instructions
2	FLD	Long Term Vacant Indicator Flag	1	Optional	This is a Boolean True / False flag indicating whether or not a site is long-term vacant. This flag is set to "1" i.e. a logical value of True where a site is Long-Term Vacant.
2	FLD	DUoS Group	1	See Instructions	This field will contain the DUoS Tariff provided in the following cases: <ul style="list-style-type: none"> • In response to a requested Change of Usage Code • As an advice of NIE Networks initiated DUoS Group changes
2	FLD	Market Participant Business Reference	1	Optional	This is a unique number given as reference in a request where one was provided on message 013 or 016 it will always be referenced back here on 114 messages marked as R = Response. Messages marked as A = Advice will not contain this item.
2	FLD	Message Status	1	Mandatory	This is a code indicating whether or not the message is a response to a 013 / 016 or is for advice where NIE Networks has carried out a change to DUoS Group and will be set to: <ul style="list-style-type: none"> • R= Response • A = Advice
2	FLD	Load Profile	1	See instructions	Load Profile is a code that determines, when coupled with Timeslot, the derived profile to be applied to the consumption for settlement. This will be provided for Non-Interval metered sites only and where available / determined at the time of sending this message.
2	FLD	Effective From Date	1	Optional	Effective From Date is a date that indicates the inclusive date from which a notified event starts. In this message it is only provided where Change of Usage flag is true and is the date that the new DUoS Tariff is effective from.

NI Market Message Implementation Guide – Customer Data and Agreements

2.5 Message 116 Change of Legal Entity Confirmation

Purpose / Description of Message

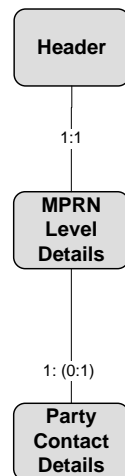
The 116 Change of Legal Entity Confirmation message is sent by the NIE Networks business to Market registered Supplier to confirm that NIE Networks has carried out the Change of Legal Entity at the Meter point as requested by the Supplier.

Message 116 is used in the following Market Process:

Process Number and Title	Use of Message
MP NI 25 Change of Legal Entity	To confirm a change of legal entity

Data Hierarchy Diagram

116 Message



NI Market Message Implementation Guide – Customer Data and Agreements

Message Structure

This section describes the structure of the 116 message. The purpose of the message segments and data items is explained and any rules for composition outlined.

Segment and Field Level Identifier – 116 Message			Rpt	Optionality	Description / Purpose and composition instructions
1	Message Header		1	Mandatory	<i>Refer to common data segments document</i>
1	Meter Point Details		1	Mandatory	
2	FLD	MPRN	1	Mandatory	The unique identifying reference number for the Meter Point that the customer has taken over. All elements of MPRN will be provided.
2	FLD	Supplier ID	1	Mandatory	The Supplier, to whom the Meter Point is registered, populated here for reference purposes.
2	SEG	Party Contact Details	1	Optional	Party Contact Details provides details such as contact name, organisation and department, telephone, e-mail and/or fax details enabling the Market participant to be contacted. This allows NIE Networks to forward their contact details in case of queries with the Change of Legal Entity confirmation. See Common Data Segments for detailed notes on structure and population
2	FLD	Effective from Date	1	Mandatory	Effective From Date is a date that indicates the date from which the Change of Legal Entity became effective in NIE Networks System.
2	FLD	Market Participant Business Reference	1	Mandatory	This is the Suppliers reference originally provided on the 016. This is provided to allow Suppliers to track which original request is being confirmed.
2	FLD	DUoS Group	1	Mandatory	This field will contain the code for the DUoS Tariff applying to the MPRN. This value will reflect what is held on the NIE Networks system and may have changed as a result of a Change to usage type notified by Supplier on the 016. See list of data codes for valid values here.
2	FLD	Economic Activity Indicator	1	Optional	Economic Activity Indicator is a code indicating the type of activity undertaken by the customer in the premises. This value will reflect what is held by NIE Networks system and may have changed as a result of the code provided on the 016.

NI Market Message Implementation Guide – Customer Data and Agreements

2.6 Message 116A Change of Legal Entity TSO confirmation – Interval Metered sites

Purpose / Description of Message

The 116A message is not used in NI.

2.7 Message 116N Change of Legal Entity Notification to a Supplier with a pending Registration

Purpose / Description of Message

The 116N message is sent to a Supplier with a pending Registration (New Supplier) when a Change of Supplier is in process and a 016 Change of Legal Entity request is received from the current Supplier (Old Supplier) for that Meter point.

The 116N message ensures that the Supplier who is applying to take over Supply of electricity at the meter point is aware that a Change of Legal Entity has occurred so that they can ensure they have a supply agreement in place with the correct Customer or cancel the Change of Supplier if necessary.

Trigger of the 116N message is dependent on the successful processing of the inbound 016 Change of Legal Entity message and the presence of an active Change of Supplier for the Meter Point.

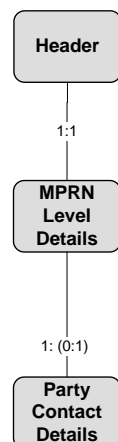
Message 116N is used in the following Market Process:

Process Number and Title	Use of Message
MP NI 25 Change of Legal Entity	To advise a change of legal entity to a Supplier with a pending registration

NI Market Message Implementation Guide – Customer Data and Agreements

Data Hierarchy Diagram

116N Message



Message Structure

This section describes the structure of the 116N message. The purposes of the message segments and data items are explained and any rules for composition outlined.

Segment and Field Level Identifier – 116N Message			Rpt	Optionality	Description / Purpose and composition instructions
1	Message Header		1	Mandatory	<i>Refer to common data segments document</i>
1	Meter Point Details		1	Mandatory	
2	FLD	MPRN	1	Mandatory	The unique identifying reference number for the Meter Point that the customer has taken over. All elements of MPRN will be provided.
2	FLD	Supplier ID	1	Mandatory	This will be the Supplier ID that has registered a Change of Supplier for the Meter Point and is also the receiver of the 116N message.
2	SEG	Party Contact Details	1	Optional	Party Contact Details provides details such as contact name, organisation and department, telephone, e-mail and/or fax details enabling the Market participant to be contacted. This allows NIE Networks to forward their contact details in case of queries with the Change of Legal Entity

NI Market Message Implementation Guide – Customer Data and Agreements

Segment and Field Level Identifier – 116N Message			Rpt	Optionality	Description / Purpose and composition instructions
					notification. See Common Data Segments for detailed notes on structure and population
2	FLD	Effective from Date	1	Mandatory	Effective From Date is a date that indicates the date from which the Change of Legal Entity is being requested by the Supplier currently registered to the Meter Point.
2	FLD	DUoS Group	1	Mandatory	This field will contain the code for the DUoS Tariff applying to the MPRN. This will be the value currently held by NIE Networks for the Meter Point (Prior to completion of the CoLE) and is provided for information here. See the list of data codes for valid values.
2	FLD	Economic Activity Indicator	1	Optional	Economic Activity Indicator is a code indicating the type of activity undertaken by the customer in the premises. This will be the value currently held by NIE Networks for the Meter Point (Prior to completion of the CoLE) and is provided for information here.

2.8 Message 116R Change of Legal Entity Rejection

Purpose / Description of Message

The 116R Change of Legal Entity rejection message is sent by the NIE Networks business to the Supplier to reject a request for a Change of Legal Entity at a Metered location sent on message 016. A Change of Legal Entity request can be rejected for the following reasons:

- MPRN is not valid for the required date
- Supplier is not registered to the MPRN
- Where message 016 is received for a future date and a subsequent valid Change of Legal Entity request is received, the original will be cancelled using message 116R.
- Incorrect/invalid data on message 016.

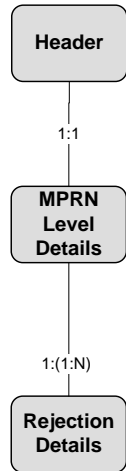
Message 116R is used in the following Market Process:

Process Number and Title	Use of Message
MP NI 25 Change of Legal Entity	To reject a change of legal entity

NI Market Message Implementation Guide – Customer Data and Agreements

Data Hierarchy Diagram

116R Message



NI Market Message Implementation Guide – Customer Data and Agreements

Message Structure

This section describes the structure of the 116R message. The purposes of the message segments and data items are explained and any rules for composition outlined.

Segment and Field Level Identifier – 116R Message			Rpt	Optionality	Description / Purpose and composition instructions
1	Message Header		1	Mandatory	<i>Refer to common data segments document</i>
1	Meter Point Details		1	Mandatory	
2	FLD	MPRN	1	Mandatory	The unique identifying reference number for the Meter Point that the customer has taken over. All elements of MPRN will be provided.
2	SEG	Rejection Details	1.N	Mandatory	This segment provides the details of why message 016 was rejected. One Reject Reason segment will be provided for each rejection reason provided.
3	FLD	Reject Reason	1	Mandatory	Reject Reason is a code to identify why data was rejected. Valid reject reasons for this message are: <ul style="list-style-type: none"> • COL – Change of Legal Entity in progress • ICU - Invalid Change of Customer Usage • IDT - Invalid date or time • IID - Invalid / incomplete data (e.g. Customer name details not completed correctly) • IMP - Invalid MPRN (MPRN does not exist or is for a Grouped Un-metered site) • MWO - Open Meter Works Order • SNR -Supplier Not registered to MPRN
2	FLD	Market Participant Business Reference	1	Mandatory	This is the Suppliers reference originally provided on message 016. This is provided to allow Suppliers to track which original request is being rejected.

2.9 Message 140: Change of Tenancy History

Purpose and Description of Message

Message 140 is sent by NIE Networks to a previous Supplier to advise that a Supplier has advised the identity of a previous Supplier for change of tenancy.

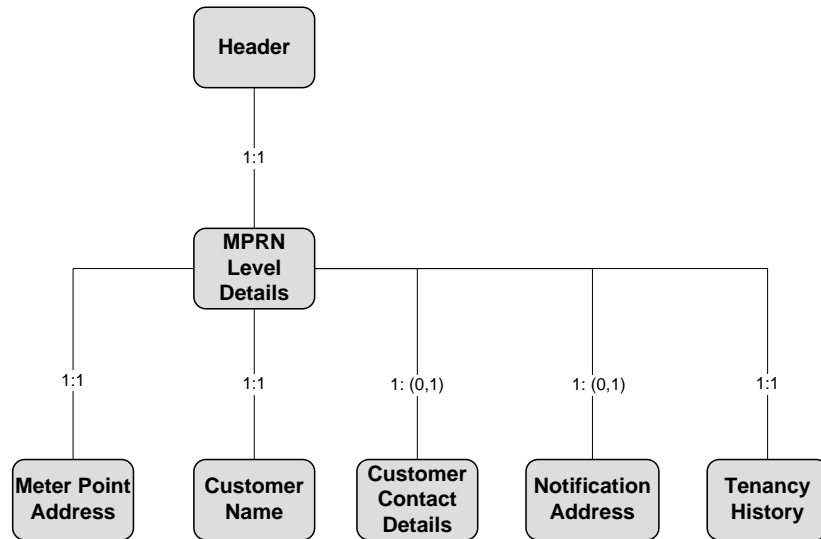
Message 140 is used in the following Market Processes:

Process Number and Title	Use of Message
MP NI 1 Change of Supplier – Non-Interval Metered	To advise a change of tenancy to a previous Supplier
MP NI 25 Change of Legal Entity	To advise a change of tenancy to a previous Supplier
MP NI 37 Change of Supplier - Keypad	To advise a change of tenancy to a previous Supplier

NI Market Message Implementation Guide – Customer Data and Agreements

Data Hierarchy Diagram

140 Message



Message Structure and Interpretation

Segment and Field Level Identifier			Rpt	Optionality	Description and Purpose
1	Message Header		1	Mandatory	<i>See Common Data Segments for detailed notes on structure and population.</i>
1	MPRN Level Information		1	Mandatory	
2	FLD	MPRN	1	Mandatory	The unique identifying reference number for the current Meter Point at which the customer is located.
2	SEG	Meter Point Address	1	Mandatory	The current address held for the Meter Point where the customer is located. See Common Data Segments for a description of individual data fields.
2	SEG	Customer Name	1	Mandatory	The name of the new customer.

NI Market Message Implementation Guide – Customer Data and Agreements

					See Common Data Segments for a description of individual data fields.
2	FLD	Supplier ID	1	Mandatory	The code identifying the Supplier providing the change of tenancy history.
2	SEG	Change of Tenancy History	1	See Description	Previous supplier and address data provided by the Supplier
3	FLD	Previous Supplier	1	Mandatory	The code identifying the previous Supplier of the customer
3	FLD	Previous Account Number	1	Optional	The customer account number that the customer has with the previous Supplier
3	FLD	Previous MPRN	1	Optional	The MPRN of the site at which the customer was supplied by the previous Supplier
3	FLD	Previous Address	1	Optional	The address at which the customer was supplied by the previous Supplier.
2	SEG	Customer Contact Details	1	Optional	This segment provides additional Customer Contact details which enables the previous Supplier to contact the customer. See Common Data Segments for detailed notes on structure and population
2	SEG	Notification Address	1	Optional	This segment provides the address details that the previous Supplier should use to correspond with the Customer where this is different to the Meter Point Address. See Common Data Segments for detailed notes on structure and population